



ARDEX Butynol® Shingles

DISCLAIMER The technical details, recommendations and other information contained in this data sheet are given in good faith and represent the best of our knowledge and experience at the time of printing. It is your responsibility to ensure that our products are used and handled correctly and in accordance with any applicable New Zealand Standard, our instructions and recommendations and only for the uses they are intended. We also reserve the right to update information without prior notice to you to reflect our ongoing research and development program. Country specific recommendations, depending on local standards, codes of practice, building regulations or industry guidelines, may effect specific installation recommendations. The supply of our products and services is also subject to certain terms, warranties and exclusions, which may have already been disclosed to you in prior dealings or are otherwise available to you on request. You should make yourself familiar with them.

ARDEX Butynol® Shingles

LAYING ARDEX BUTYNOL® DIAMOND SHINGLES

Setting Out

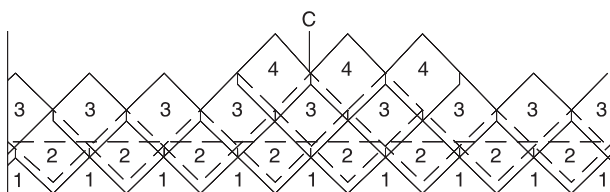
1. Mark the substrate horizontally with a chalk line 350mm up from bottom.
2. Mark a vertical line, top to bottom, and centre of the roof.
3. Mark off 300mm vertical spacings from the centre vertical line (both sides).

Laying

1. Cut a starter flashing wide enough to cover the first 350mm at the bottom edge of the roof, up to the horizontal chalk line, allowing extra in width for gutter or fascia flashing.
2. Apply adhesive, and lay when ready.
3. Starting from the centre vertical chalk line, loose lay the first shingles, making sure that the top and bottom are in line with the vertical marking. Now loose lay the entire bottom row, making sure each shingle is butted up to each other.
4. With chalk, mark the starter flashing where the adhesive should be applied using the loose laid shingles to mark around. This is to eliminate over brushing of adhesive.
5. Remove loose laid shingles and apply adhesive to substrate and shingles which are to be laid (up to 5 shingles are manageable at one time).
6. Lay when ready, starting with centre shingle and making sure each shingle aligns with vertical markings and is well butted together.
7. Lay entire bottom row first.
8. Following rows are laid identically, but are staggered and overlap row below by 25mm.
9. Each shingle must be carefully rolled, paying special attention to lapped edges.
10. The top row of shingles may be cut to suit the specifications and a Butynol® overflashing used to finish the ridge.

Any excess adhesive should be cleaned off as you go with WA98 solvent.

Roof area coverage of 50 shingles is approximately 8.82m².



After doing 350mm bottom flashing #1, then start laying full shingles #2, #3, #4 etc.

Always start from centre on first row.

LAYING ARDEX BUTYNOL® STANDARD SHINGLES

Priming Substrate

In areas where rain could interrupt work, it is recommended that a primer coat of WA98 adhesive be applied to substrate to prevent penetration of moisture.

Underflashings

Glue and fix Butynol® 380mm underflashing down barges, valleys, hips etc. and also along the bottom of the roof allowing an overhang into the gutter.

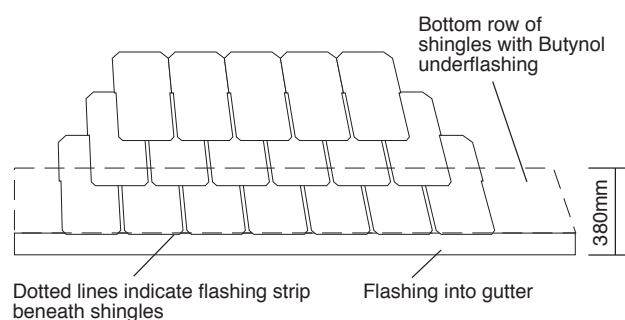
Laying

1. Make a chalk line horizontally along the roof, one shingle height up. This line marks the top of the first row of shingles. Apply adhesive by brush or roller to substrate and shingle - approximately five at a time for one person - pulling off plastic backing before doing so. After flashing off time locate the top of the shingle on the chalk line and smooth down.
2. To locate the next row, mark a horizontal chalk line up one shingle height minus the overlap onto the lower shingle.
3. Each shingle must now be carefully rolled, paying special attention to lapped edges.
4. The top row of shingles may be cut to suit the apex and a Butynol® overflashing used to finish at the ridge.

Any excess adhesive should be cleaned off as you go, with WA98 solvent.

Roof area coverage of 50 shingles is approximately 3.57m².

Note: Ardex Shingles have a forty-five degree cut on outside edges.



Standard Shingles

Approximately 580x290mm, 50% overlap of the shingle below.

Raumati Shingle

Approximately 540x270mm. A 280x75mm fillet is required to complete the seal.