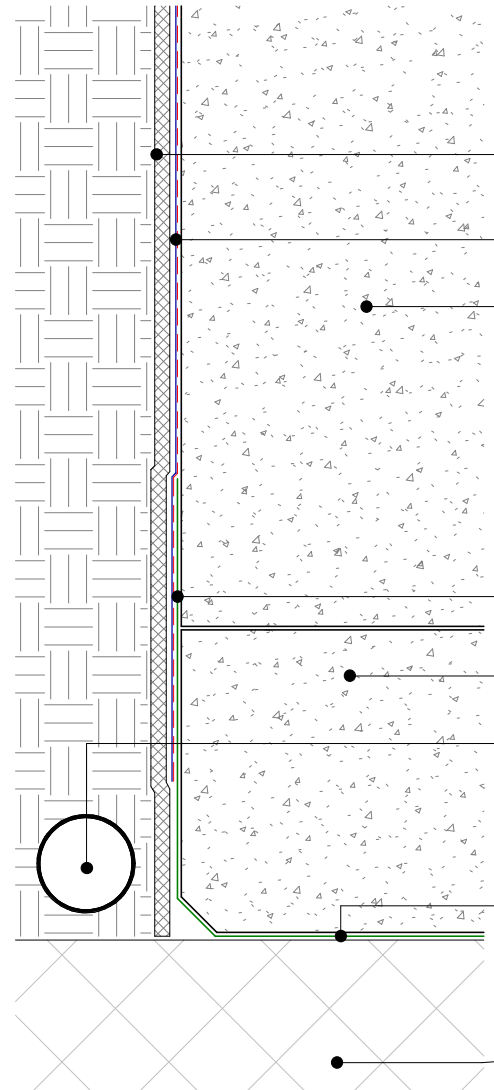


*Drainage coil omitted in hydrostatic situations

100
100



ARDEX DRS 10 GC drainage, high density insulation or combination with ARDEX DRS 10 GC installed over HD insulation

ARDEX WPM 195 applied over ARDEX WPM 240 or ARDEX WPM 247 primer

Concrete wall

ARDEX WPM 196 membrane loose laid with torched laps and mineral chip facing concrete pour

Concrete slab

Drainage coil (to be omitted in hydrostatic situations)

ARDEX WPM 196 membrane loose laid with torched laps and mineral chip facing upwards

Site concrete, high density insulation, sand blinding or mud slab approved substrates

ARDEX TANKING

FLUSH WALL TO FOUNDATION

SHEET TITLE

DWG NO. **ATT-01**

DATE 21/08/2020

SCALE As indicated



Disclaimer: Ardex makes every reasonable effort to ensure that the technical details, recommendations and other information contained in this drawing are accurate and represent our knowledge and experience at the time of design and publication. Ardex reserves the right to change the information without prior notice. Ardex provides the information in good faith with no representations or warranties (whether implied or otherwise), and will not be liable for any losses or damages (whether direct, indirect or consequential) whatsoever, whether in contract, negligence or any other action, arising out of or in connection with the use, or inability to use, the information.

It is your responsibility to ensure that our products are used only for the purposes for which they are intended and are used in accordance with any applicable specifications, guidelines, standards, codes of practice, regulations and laws. The supply of our products and services are also subject to certain terms, warranties and exclusions which are available on request.