

ARDEX WPM 240/247 OR ARDEX
WPM 300 FOR DAMP/GREEN
CONCRETE

ARDEX WPM 5000HD DPM
MEMBRANE

PRECAST CONCRETE WITH NO
VOIDS
BLOCKWORK WITH FLUSH FINISH
TO DPM SIDE

ARDEX DRS 10 GC PROTECTION
BOARD

ARDEX WPM 5000HD DPM
MEMBRANE

WATER STOP ARDEX WPM 1955

20mm ARDEX A 46 FILLET MINIMUM
AT ALL INTERNAL JUNCTIONS

ARDEX WPM 3000X DPM
UNDERFLASHING MINIMUM 300mm
WIDE

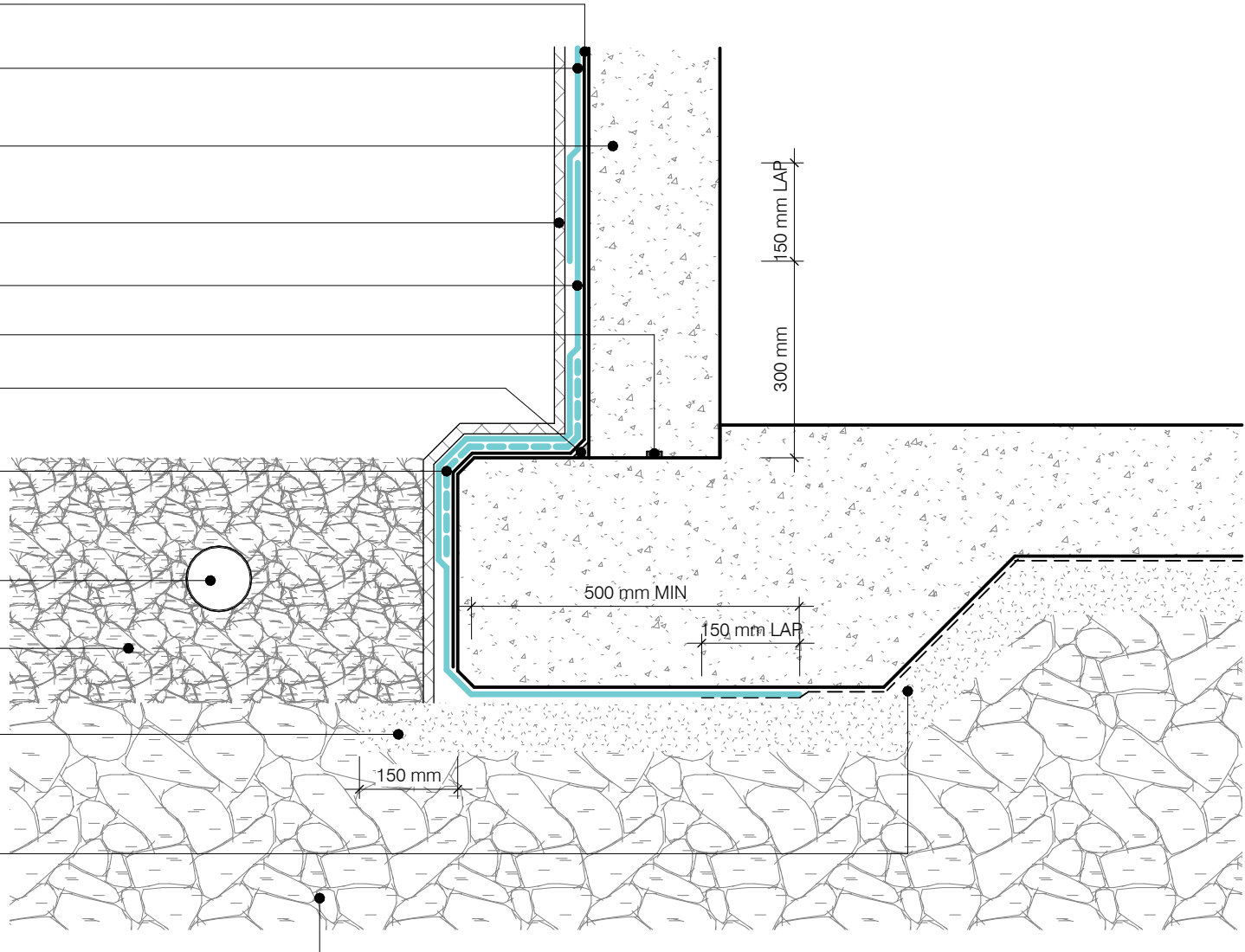
100mm SLOTTED DRAIN WITH
FILTER FABRIC MINIMUM FALL 1:200
TO DRAINS

AGGREGATE AS SPECIFIED

MIN 75mm SITE CONCRETE OR
COMPACTED HARDFILL OR SAND
BLINDING AS PER ENGINEERS
SPECIFICATION

HORIZONTAL DPC NOT COVERED
BY ARDEX WARRANTY
ARDEX RECOMMEND TAKING
MEMBRANE UNDER ENTIRE SLAB
FOR COMPLETE WATERPROOFING

20mm COMPACTED BASE



WPM 5000HD

FOOTING JUNCTION STEP

DWG NO. **AS-02(HD)**

DATE 21.08.2022

SCALE @ 1:10



Disclaimer: Ardex makes every reasonable effort to ensure that the technical details, recommendations and other information contained in this drawing are accurate and represent our knowledge and experience at the time of design and publication. Ardex reserves the right to change the information without prior notice. Ardex provides the information in good faith with no representations or warranties (whether implied or otherwise), and will not be liable for any losses or damages (whether direct, indirect or consequential) whatsoever, whether in contract, negligence or any other action, arising out of or in connection with the use, or inability to use, the information. It is your responsibility to ensure that our products are used only for the purposes for which they are intended and are used in accordance with any applicable specifications, guidelines, standards, codes of practice, regulations and laws. The supply of our products and services are also subject to certain terms, warranties and exclusions which are available on request.