

PRECAST CONCRETE WITH NO
VOIDS
BLOCKWORK WITH FLUSH FINISH
TO DPM SIDE

ARDEX PRESSURE BAR 10801 FIXED
AT 200 CENTRES AND ARDEX
BITUMINOUS SEALANT

ARDEX WPM 5000HD DPM
MEMBRANE

ARDEX WPM 240/247 OR ARDEX
WPM 300 FOR DAMP/GREEN
CONCRETE

ARDEX DRS 10 GC PROTECTION
BOARD

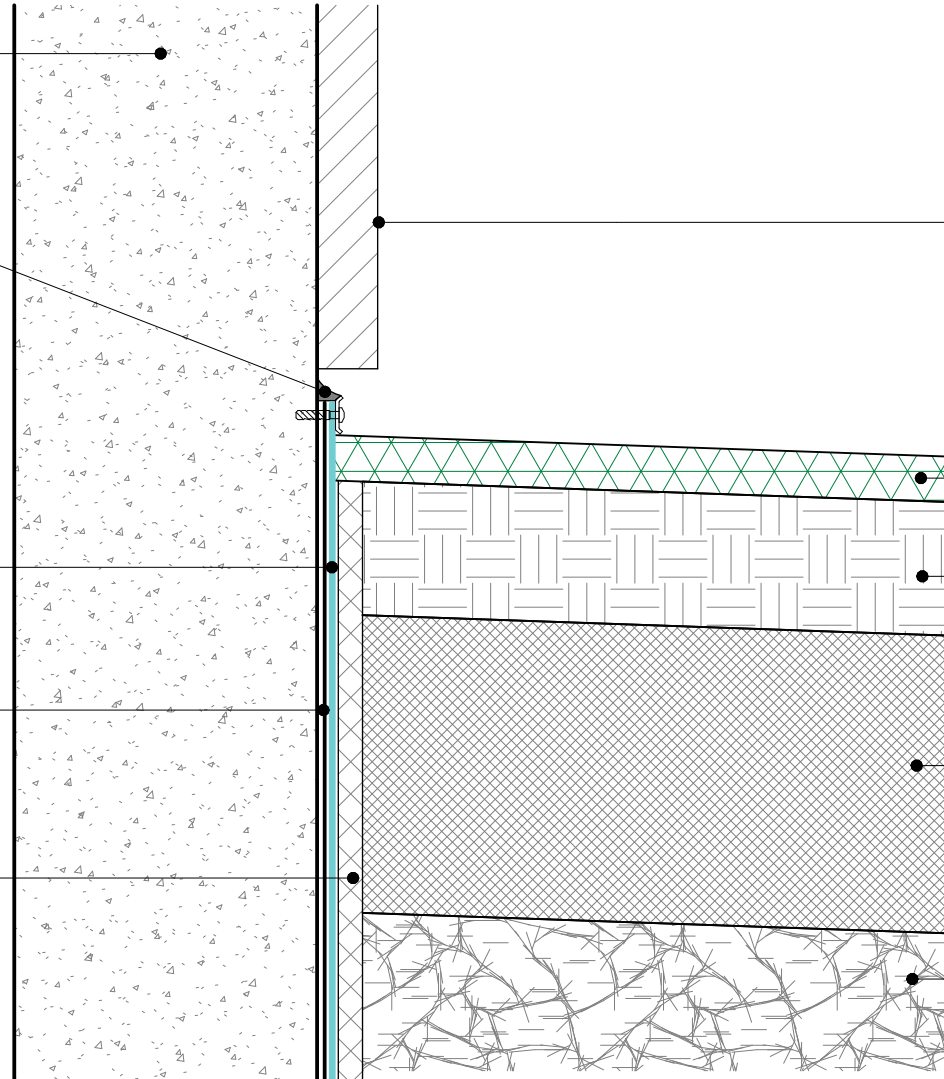
CLADDING OR WATERPROOFING

GRASS

SOIL

IMPERVIOUS CLAY FILL

DRAINAGE AS SPECIFIED



WPM 5000HD

PRESSURE BAR TERMINATION

DWG NO. **AS-06(HD)**

DATE 21.08.2022

SCALE @ 1/45



Disclaimer: Ardex makes every reasonable effort to ensure that the technical details, recommendations and other information contained in this drawing are accurate and represent our knowledge and experience at the time of design and publication. Ardex reserves the right to change the information without prior notice. Ardex provides the information in good faith with no representations or warranties (whether implied or otherwise), and will not be liable for any losses or damages (whether direct, indirect or consequential) whatsoever, whether in contract, negligence or any other action, arising out of or in connection with the use, or inability to use, the information. It is your responsibility to ensure that our products are used only for the purposes for which they are intended and are used in accordance with any applicable specifications, guidelines, standards, codes of practice, regulations and laws. The supply of our products and services are also subject to certain terms, warranties and exclusions which are available on request.