

ARDEX WPM 1000 DRAWING LIST

DRAWING NO.	SHEET TITLE	DATE
WT-00	DRAWING LIST	13/07/2022
WT-01	THRESHOLD AT OPENING - REBATED	13/07/2022
WT-02	THRESHOLD AT OPENING	13/07/2022
WT-03	BOTTOM PLATE WALL - DIRECT FIXED	13/07/2022
WT-04	BOTTOM PLATE WALL - CAVITY	13/07/2022
WT-05	OVERFLOW	13/07/2022
WT-06	SCUPPER OUTLET	13/07/2022
WT-07	SPOUTING	13/07/2022
WT-08	EAVES & VERGE	13/07/2022
WT-09	FLASHING INTO CONCRETE WALLS - CHASE	13/07/2022
WT-10	FLASHING INTO CONCRETE WALLS - MECHANICAL	13/07/2022
WT-11	FLASHING INTO CONCRETE WALLS - FLASHING	13/07/2022
WT-12	PIPE PENETRATION	13/07/2022
WT-13	TOP FIXED BALUSTRADE	13/07/2022
WT-14	PLANT EQUIPMENT SUPPORTS	13/07/2022
WT-15	TAPING SUBSTRATE	13/07/2022
WT-16	SEISMIC JOINT	13/07/2022
WT-17	TYPICAL MEMBRANE LAP & LAYERS	13/07/2022
WT-18	3D - INTERNAL CORNER	13/07/2022
WT-19	3D - ROOF EDGE MECHANICAL FIXED	13/07/2022
WT-20	WPM 1000 CLAMP WASTE	13/07/2022

ARDEX WPM 1000

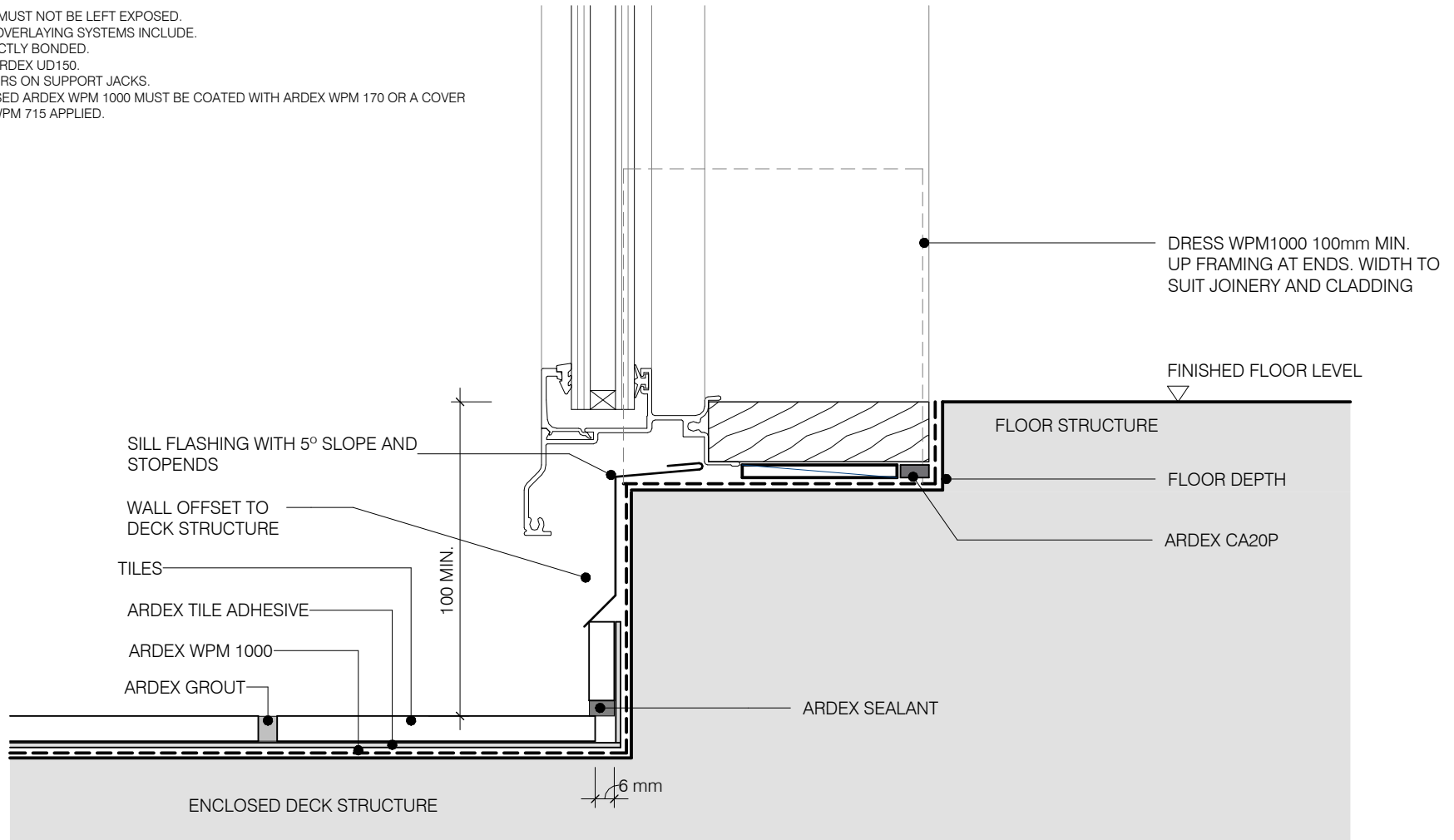
DRAWING LIST
SHEET TITLE

DWG NO. **WT-00**
DATE 13/07/2022
SCALE NOT TO SCALE



Disclaimer: Ardex makes every reasonable effort to ensure that the technical details, recommendations and other information contained in this drawing are accurate and represent our knowledge and experience at the time of design and publication. Ardex reserves the right to change the information without prior notice. Ardex provides the information in good faith with no representations or warranties (whether implied or otherwise), and will not be liable for any losses or damages (whether direct, indirect or consequential) whatsoever, whether in contract, negligence or any other action, arising out of or in connection with the use, or inability to use, the information. It is your responsibility to ensure that our products are used only for the purposes for which they are intended and are used in accordance with any applicable specifications, guidelines, standards, codes of practice, regulations and laws. The supply of our products and services are also subject to certain terms, warranties and exclusions which are available on request.

NOTE:
 WPM 1000 MUST NOT BE LEFT EXPOSED.
 SUITABLE OVERLAYING SYSTEMS INCLUDE:
 TILES DIRECTLY BONDED.
 TILES ON ARDEX UD150.
 TILES/PAVERS ON SUPPORT JACKS.
 ANY EXPOSED ARDEX WPM 1000 MUST BE COATED WITH ARDEX WPM 170 OR A COVER STRIP OF WPM 715 APPLIED.



ARDEX WPM 1000

THRESHOLD AT OPENING - REBATED

SHEET TITLE

DWG NO.

WT-01

DATE

13/07/2022

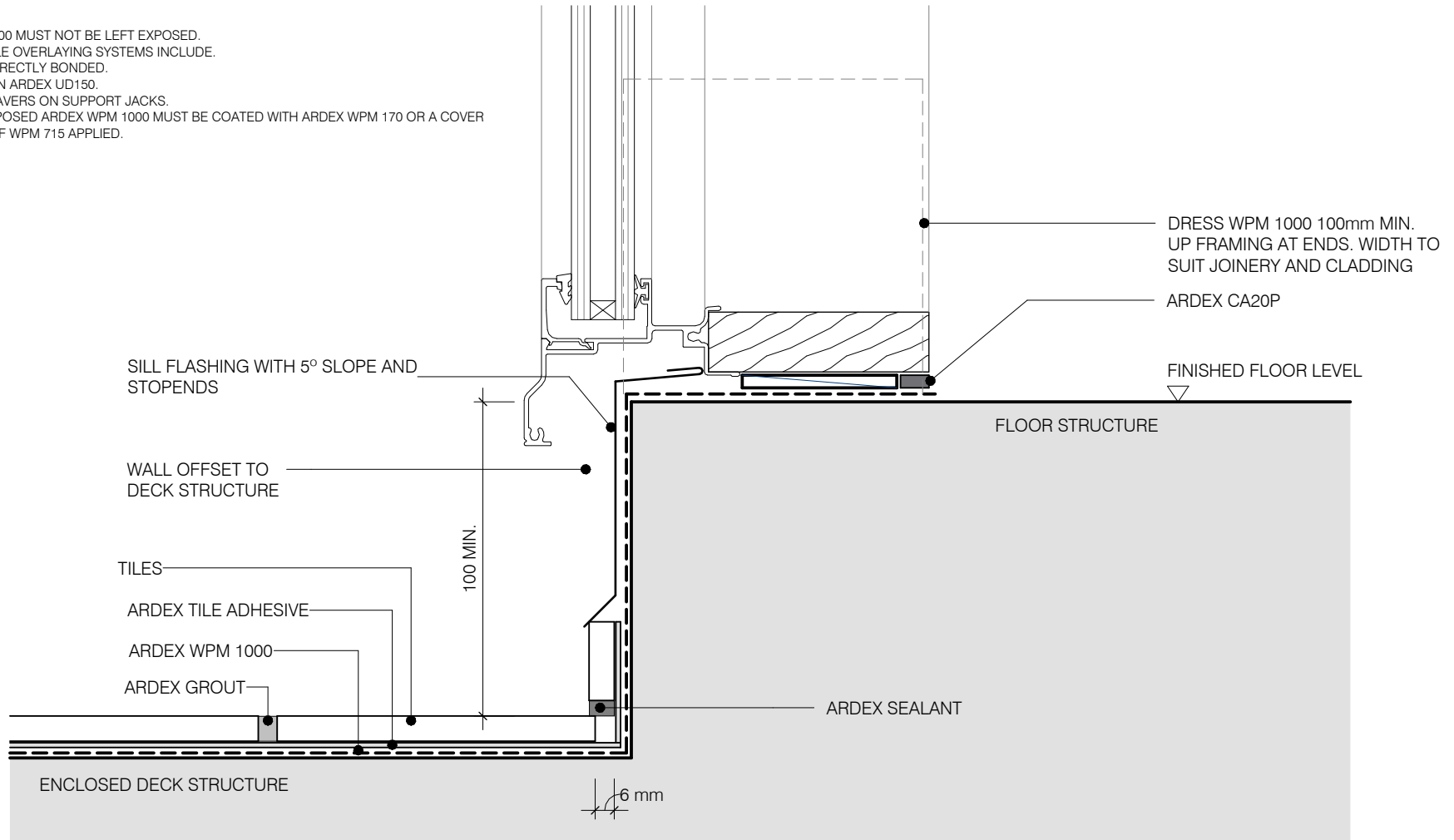
SCALE

1 : 2 @ A4



Disclaimer: Ardex makes every reasonable effort to ensure that the technical details, recommendations and other information contained in this drawing are accurate and represent our knowledge and experience at the time of design and publication. Ardex reserves the right to change the information without prior notice. Ardex provides the information in good faith with no representations or warranties (whether implied or otherwise), and will not be liable for any losses or damages (whether direct, indirect or consequential) whatsoever, whether in contract, negligence or any other action, arising out of or in connection with the use, or inability to use, the information. It is your responsibility to ensure that our products are used only for the purposes for which they are intended and are used in accordance with any applicable specifications, guidelines, standards, codes of practice, regulations and laws. The supply of our products and services are also subject to certain terms, warranties and exclusions which are available on request.

NOTE:
 WPM 1000 MUST NOT BE LEFT EXPOSED.
 SUITABLE OVERLAYING SYSTEMS INCLUDE:
 TILES DIRECTLY BONDED,
 TILES ON ARDEX UD150,
 TILES/PAVERS ON SUPPORT JACKS.
 ANY EXPOSED ARDEX WPM 1000 MUST BE COATED WITH ARDEX WPM 170 OR A COVER STRIP OF WPM 715 APPLIED.



ARDEX WPM 1000

THRESHOLD AT OPENING

DWG NO. **WT-02**

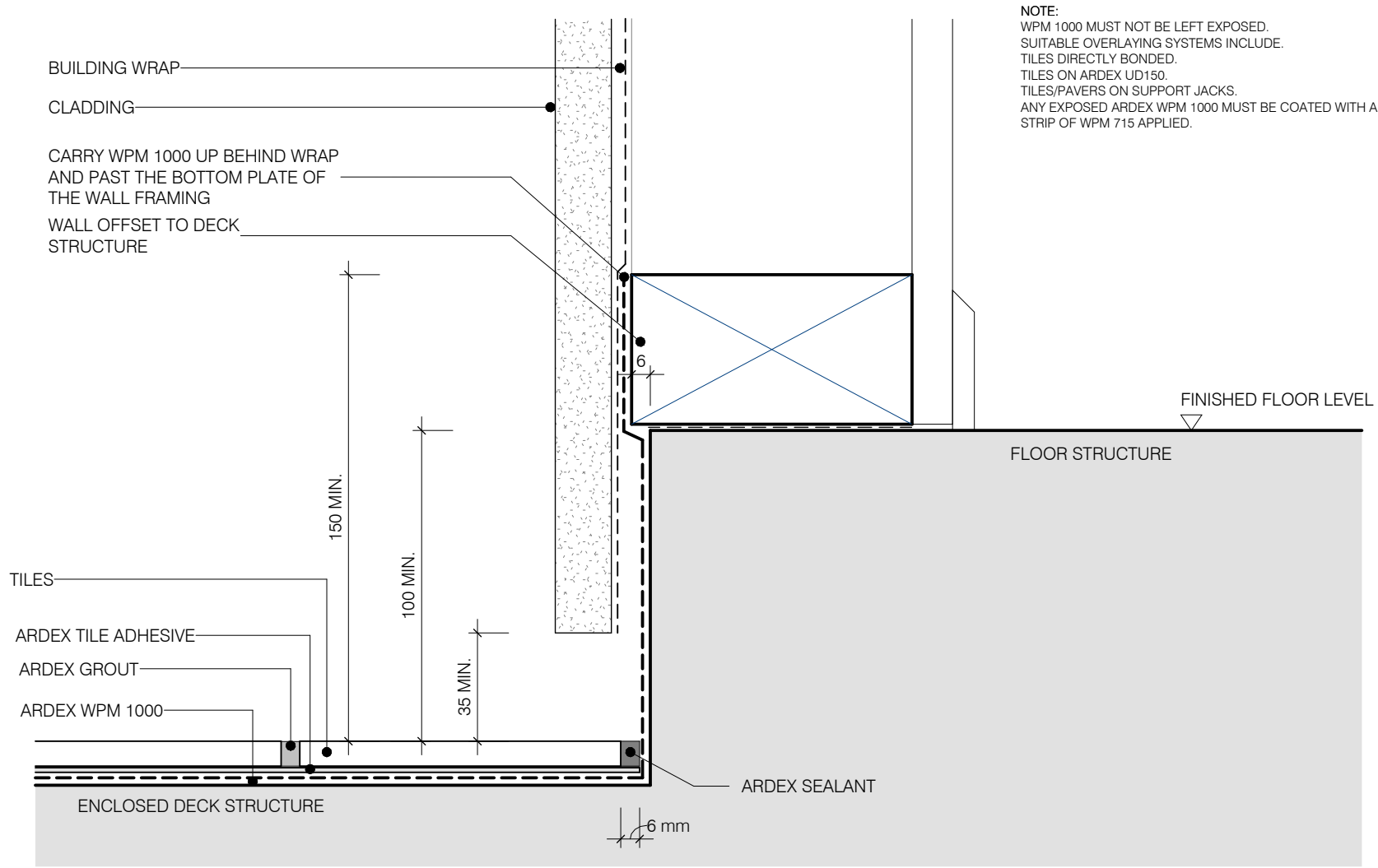
DATE 13/07/2022

SCALE 1 : 2 @ A4



Disclaimer: Ardex makes every reasonable effort to ensure that the technical details, recommendations and other information contained in this drawing are accurate and represent our knowledge and experience at the time of design and publication. Ardex reserves the right to change the information without prior notice. Ardex provides the information in good faith with no representations or warranties (whether implied or otherwise), and will not be liable for any losses or damages (whether direct, indirect or consequential) whatsoever, whether in contract, negligence or any other action, arising out of or in connection with the use, or inability to use, the information. It is your responsibility to ensure that our products are used only for the purposes for which they are intended and are used in accordance with any applicable specifications, guidelines, standards, codes of practice, regulations and laws. The supply of our products and services are also subject to certain terms, warranties and exclusions which are available on request.

SHEET TITLE



NOTE:
 WPM 1000 MUST NOT BE LEFT EXPOSED.
 SUITABLE OVERLAYING SYSTEMS INCLUDE:
 TILES DIRECTLY BONDED.
 TILES ON ARDEX UD150.
 TILES/PAVERS ON SUPPORT JACKS.
 ANY EXPOSED ARDEX WPM 1000 MUST BE COATED WITH ARDEX WPM 170 OR A COVER STRIP OF WPM 715 APPLIED.

ARDEX WPM 1000

BOTTOM PLATE WALL - DIRECT FIXED

SHEET TITLE

DWG NO. **WT-03**

DATE 13/07/2022

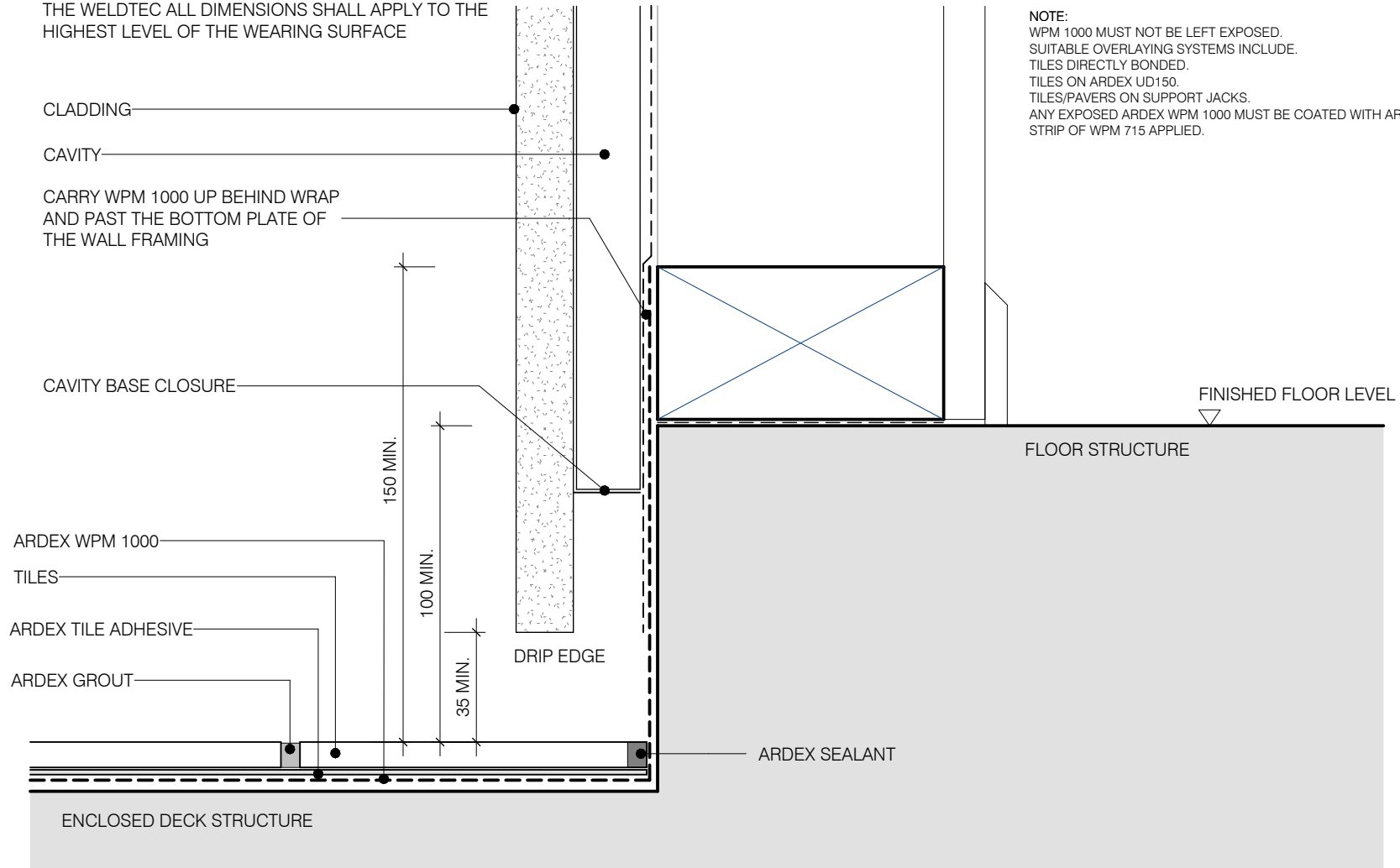
SCALE 1 : 2 @ A4



Disclaimer: Ardex makes every reasonable effort to ensure that the technical details, recommendations and other information contained in this drawing are accurate and represent our knowledge and experience at the time of design and publication. Ardex reserves the right to change the information without prior notice. Ardex provides the information in good faith with no representations or warranties (whether implied or otherwise), and will not be liable for any losses or damages (whether direct, indirect or consequential) whatsoever, whether in contract, negligence or any other action, arising out of or in connection with the use, or inability to use, the information. It is your responsibility to ensure that our products are used only for the purposes for which they are intended and are used in accordance with any applicable specifications, guidelines, standards, codes of practice, regulations and laws. The supply of our products and services are also subject to certain terms, warranties and exclusions which are available on request.

NOTE:

- 1). INTERNAL CORNERS TO BE FORMED AS PER DETAIL
- 2). DIMENSIONS ARE SHOWN TO TILES. HOWEVER, WHERE THERE IS ADDITIONAL MATERIAL APPLIED OVER THE WELDTEC ALL DIMENSIONS SHALL APPLY TO THE HIGHEST LEVEL OF THE WEARING SURFACE



NOTE:
 WPM 1000 MUST NOT BE LEFT EXPOSED.
 SUITABLE OVERLAYING SYSTEMS INCLUDE.
 TILES DIRECTLY BONDED.
 TILES ON ARDEX UD150.
 TILES/PAVERS ON SUPPORT JACKS.
 ANY EXPOSED ARDEX WPM 1000 MUST BE COATED WITH ARDEX WPM 170 OR A COVER STRIP OF WPM 715 APPLIED.

ARDEX WPM 1000

BOTTOM PLATE WALL - CAVITY

DWG NO. **WT-04**

DATE 13/07/2022

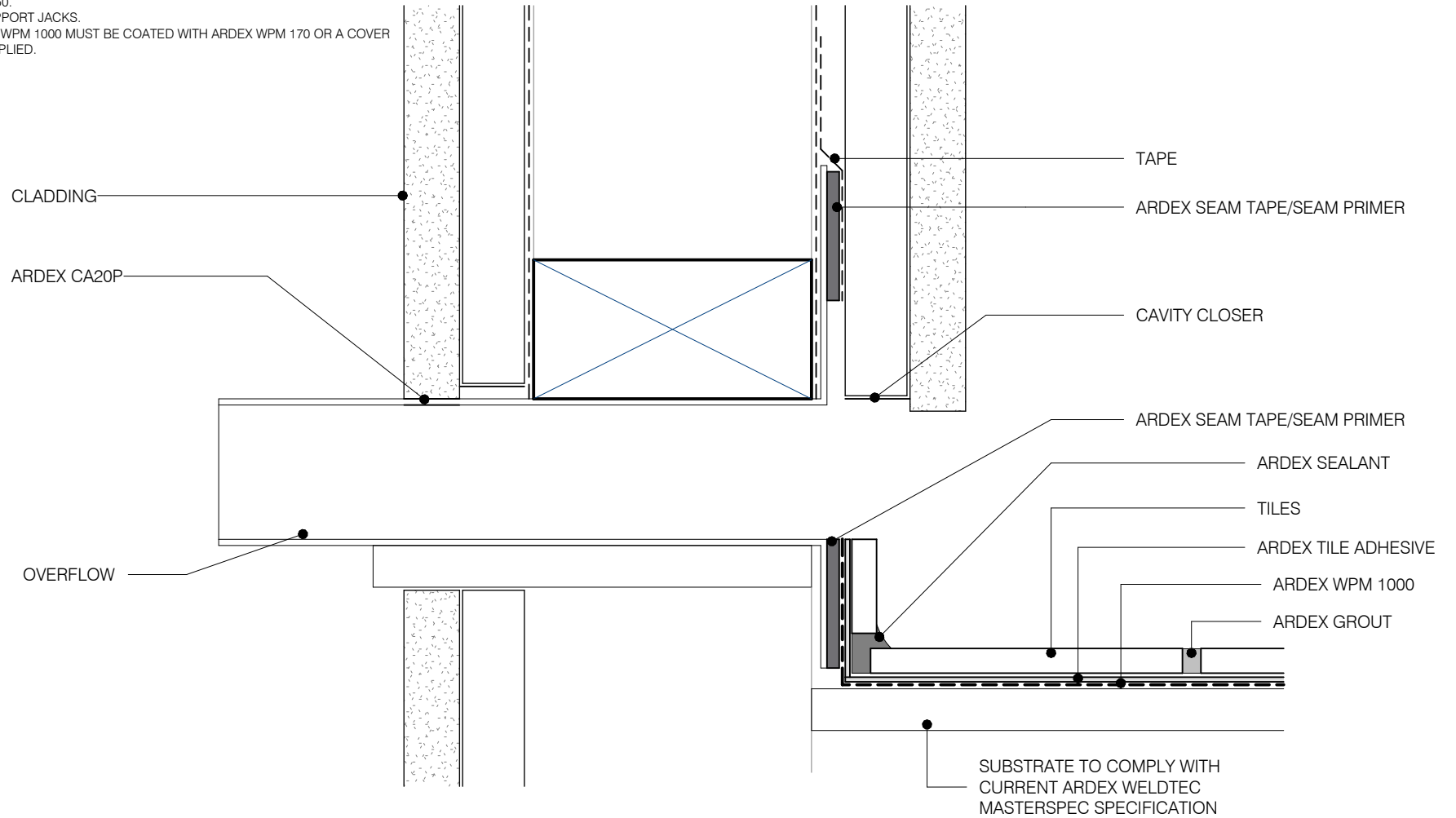
SCALE 1 : 2 @ A4



Disclaimer: Ardex makes every reasonable effort to ensure that the technical details, recommendations and other information contained in this drawing are accurate and represent our knowledge and experience at the time of design and publication. Ardex reserves the right to change the information without prior notice. Ardex provides the information in good faith with no representations or warranties (whether implied or otherwise), and will not be liable for any losses or damages (whether direct, indirect or consequential) whatsoever, whether in contract, negligence or any other action, arising out of or in connection with the use, or inability to use, the information. It is your responsibility to ensure that our products are used only for the purposes for which they are intended and are used in accordance with any applicable specifications, guidelines, standards, codes of practice, regulations and laws. The supply of our products and services are also subject to certain terms, warranties and exclusions which are available on request.

SHEET TITLE

NOTE:
 WPM 1000 MUST NOT BE LEFT EXPOSED.
 SUITABLE OVERLAYING SYSTEMS INCLUDE:
 TILES DIRECTLY BONDED.
 TILES ON ARDEX UD150.
 TILES/PAVERS ON SUPPORT JACKS.
 ANY EXPOSED ARDEX WPM 1000 MUST BE COATED WITH ARDEX WPM 170 OR A COVER STRIP OF WPM 715 APPLIED.



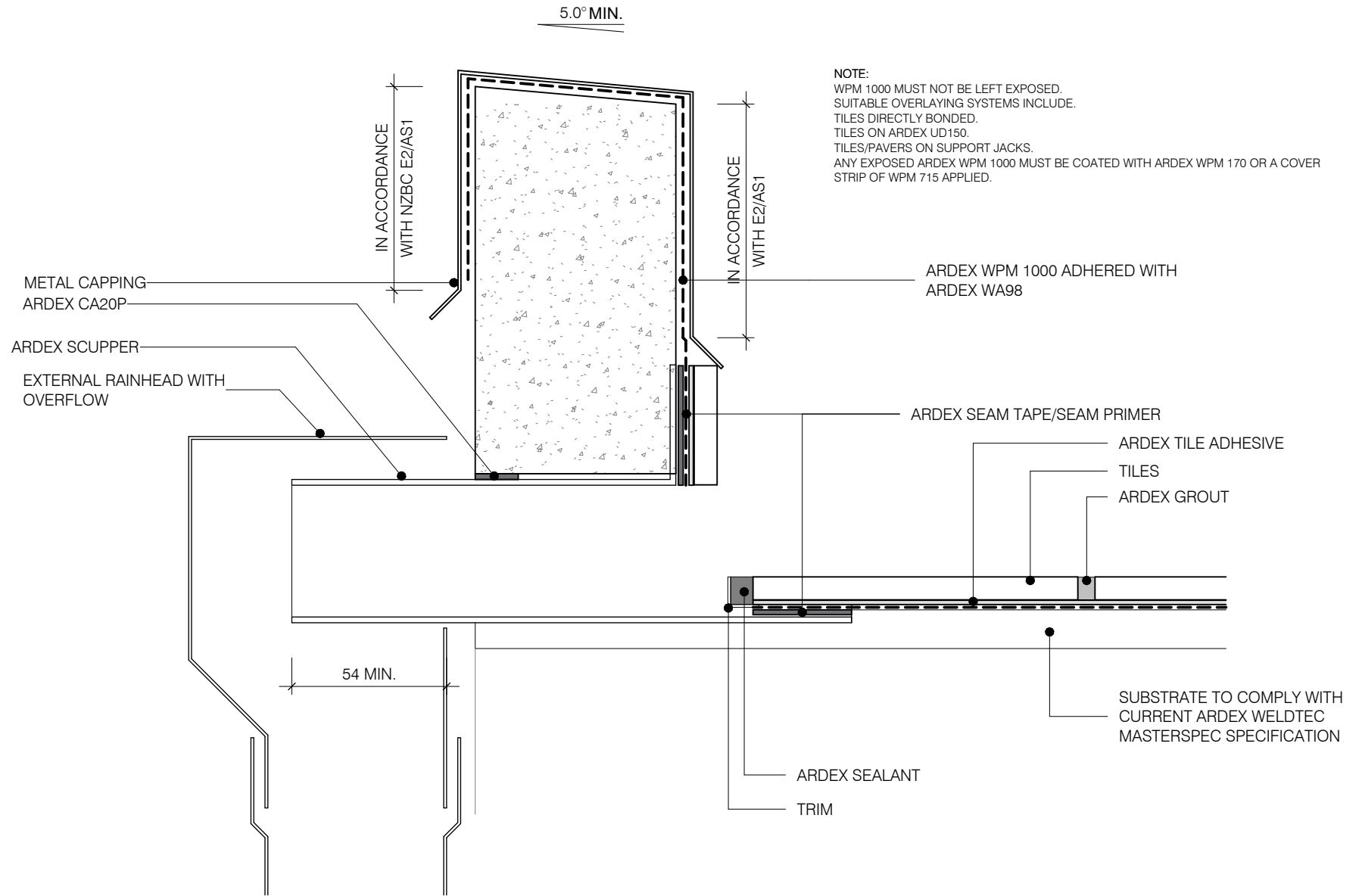
ARDEX WPM 1000

OVERFLOW SHEET TITLE

DWG NO. **WT-05**
 DATE 13/07/2022
 SCALE 1 : 2 @ A4



Disclaimer: Ardex makes every reasonable effort to ensure that the technical details, recommendations and other information contained in this drawing are accurate and represent our knowledge and experience at the time of design and publication. Ardex reserves the right to change the information without prior notice. Ardex provides the information in good faith with no representations or warranties (whether implied or otherwise), and will not be liable for any losses or damages (whether direct, indirect or consequential) whatsoever, whether in contract, negligence or any other action, arising out of or in connection with the use, or inability to use, the information. It is your responsibility to ensure that our products are used only for the purposes for which they are intended and are used in accordance with any applicable specifications, guidelines, standards, codes of practice, regulations and laws. The supply of our products and services are also subject to certain terms, warranties and exclusions which are available on request.



ARDEX WPM 1000

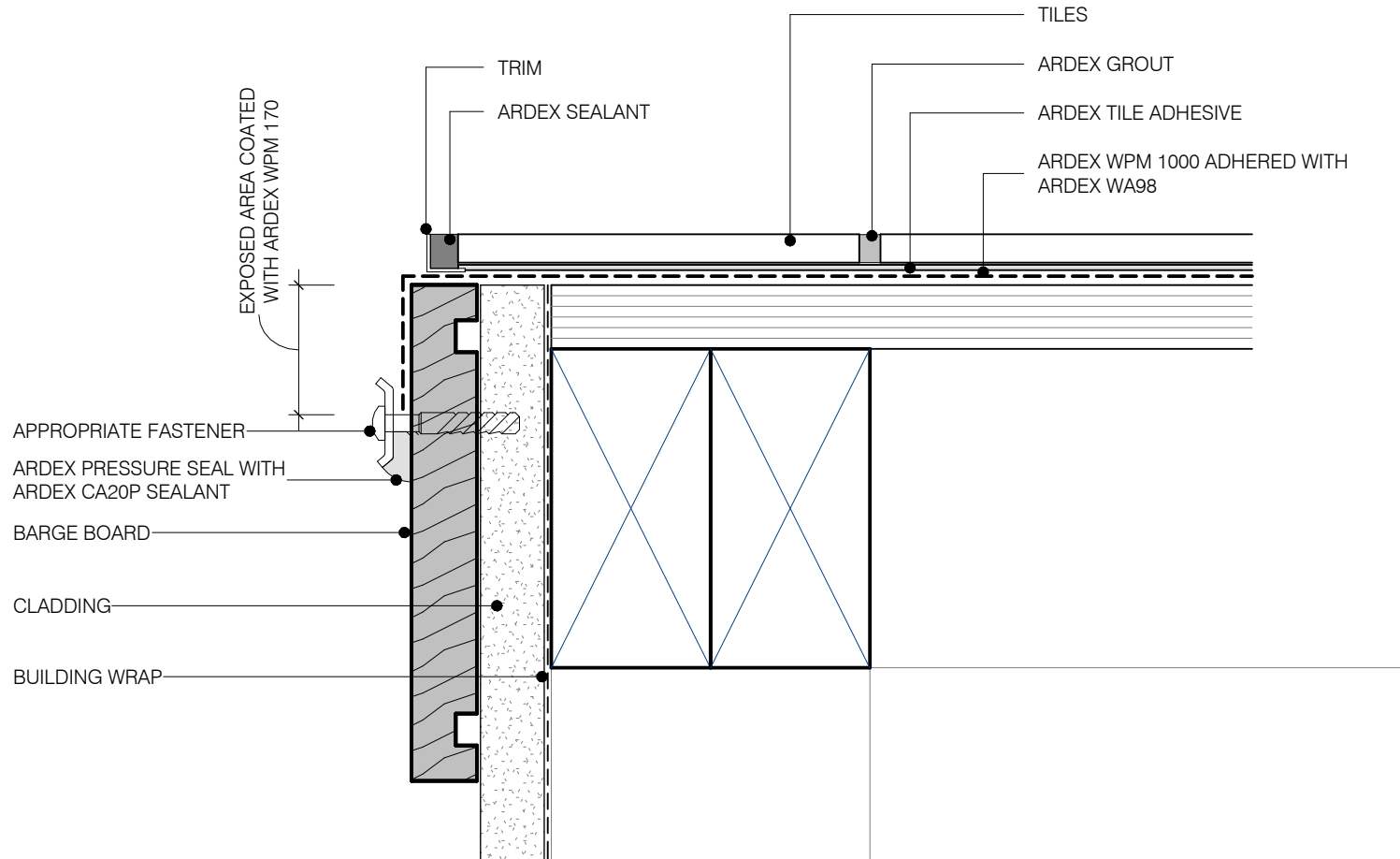
SCUPPER OUTLET SHEET TITLE

DWG NO. **WT-06**
 DATE 13/07/2022
 SCALE 1 : 2 @ A4



Disclaimer: Ardex makes every reasonable effort to ensure that the technical details, recommendations and other information contained in this drawing are accurate and represent our knowledge and experience at the time of design and publication. Ardex reserves the right to change the information without prior notice. Ardex provides the information in good faith with no representations or warranties (whether implied or otherwise), and will not be liable for any losses or damages (whether direct, indirect or consequential) whatsoever, whether in contract, negligence or any other action, arising out of or in connection with the use, or inability to use, the information. It is your responsibility to ensure that our products are used only for the purposes for which they are intended and are used in accordance with any applicable specifications, guidelines, standards, codes of practice, regulations and laws. The supply of our products and services are also subject to certain terms, warranties and exclusions which are available on request.

NOTE:
 WPM 1000 MUST NOT BE LEFT EXPOSED.
 SUITABLE OVERLAYING SYSTEMS INCLUDE:
 TILES DIRECTLY BONDED.
 TILES ON ARDEX UD150.
 TILES/PAVERS ON SUPPORT JACKS.
 ANY EXPOSED ARDEX WPM 1000 MUST BE COATED WITH ARDEX WPM 170 OR A COVER STRIP OF WPM 715 APPLIED.



ARDEX WPM 1000

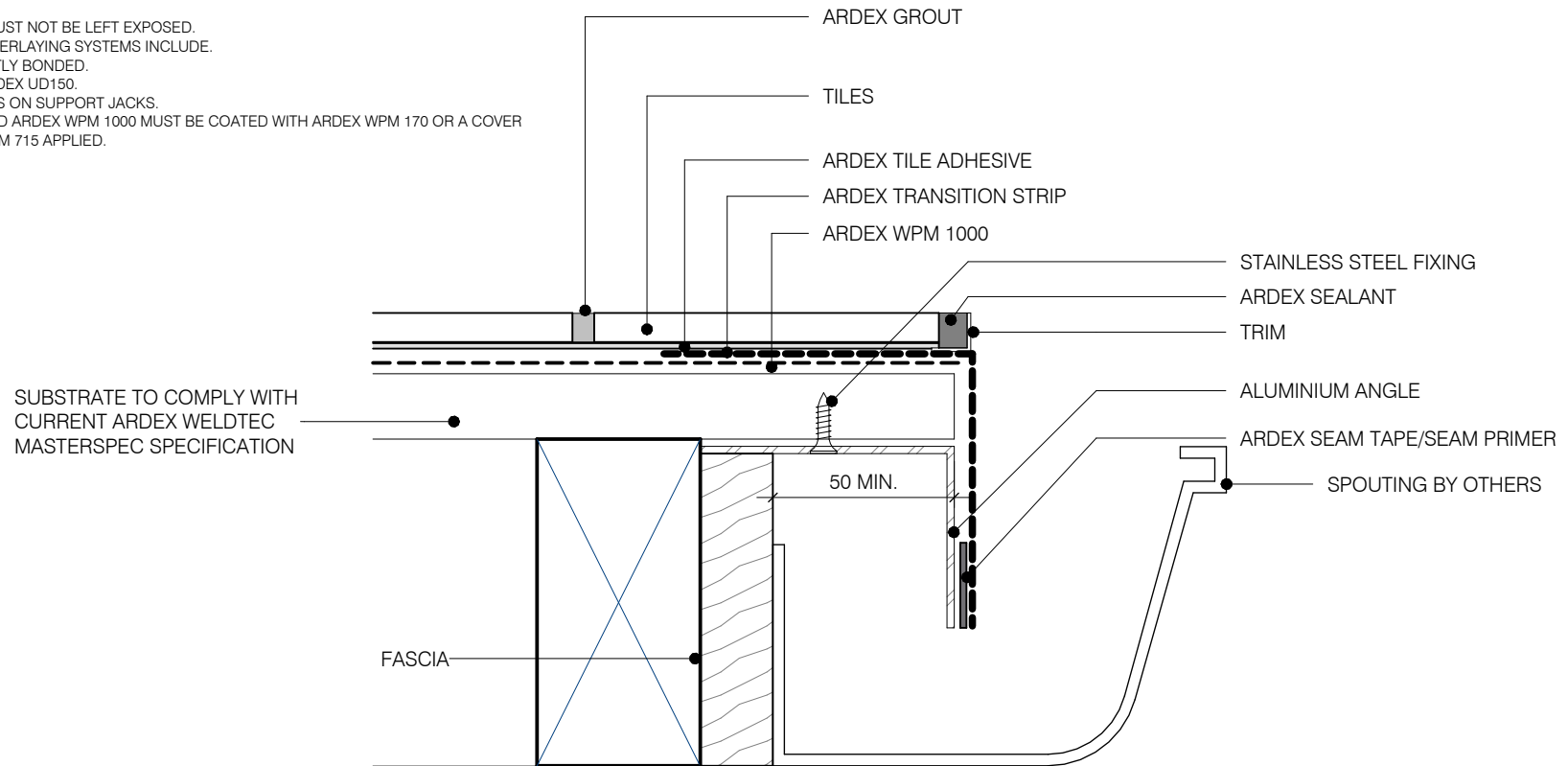
EAVES & VERGE SHEET TITLE

DWG NO. **WT-08**
 DATE 13/07/2022
 SCALE 1 : 2 @ A4



Disclaimer: Ardex makes every reasonable effort to ensure that the technical details, recommendations and other information contained in this drawing are accurate and represent our knowledge and experience at the time of design and publication. Ardex reserves the right to change the information without prior notice. Ardex provides the information in good faith with no representations or warranties (whether implied or otherwise), and will not be liable for any losses or damages (whether direct, indirect or consequential) whatsoever, whether in contract, negligence or any other action, arising out of or in connection with the use, or inability to use, the information. It is your responsibility to ensure that our products are used only for the purposes for which they are intended and are used in accordance with any applicable specifications, guidelines, standards, codes of practice, regulations and laws. The supply of our products and services are also subject to certain terms, warranties and exclusions which are available on request.

NOTE:
 WPM 1000 MUST NOT BE LEFT EXPOSED.
 SUITABLE OVERLAYING SYSTEMS INCLUDE:
 TILES DIRECTLY BONDED.
 TILES ON ARDEX UD150.
 TILES/PAVERS ON SUPPORT JACKS.
 ANY EXPOSED ARDEX WPM 1000 MUST BE COATED WITH ARDEX WPM 170 OR A COVER STRIP OF WPM 715 APPLIED.



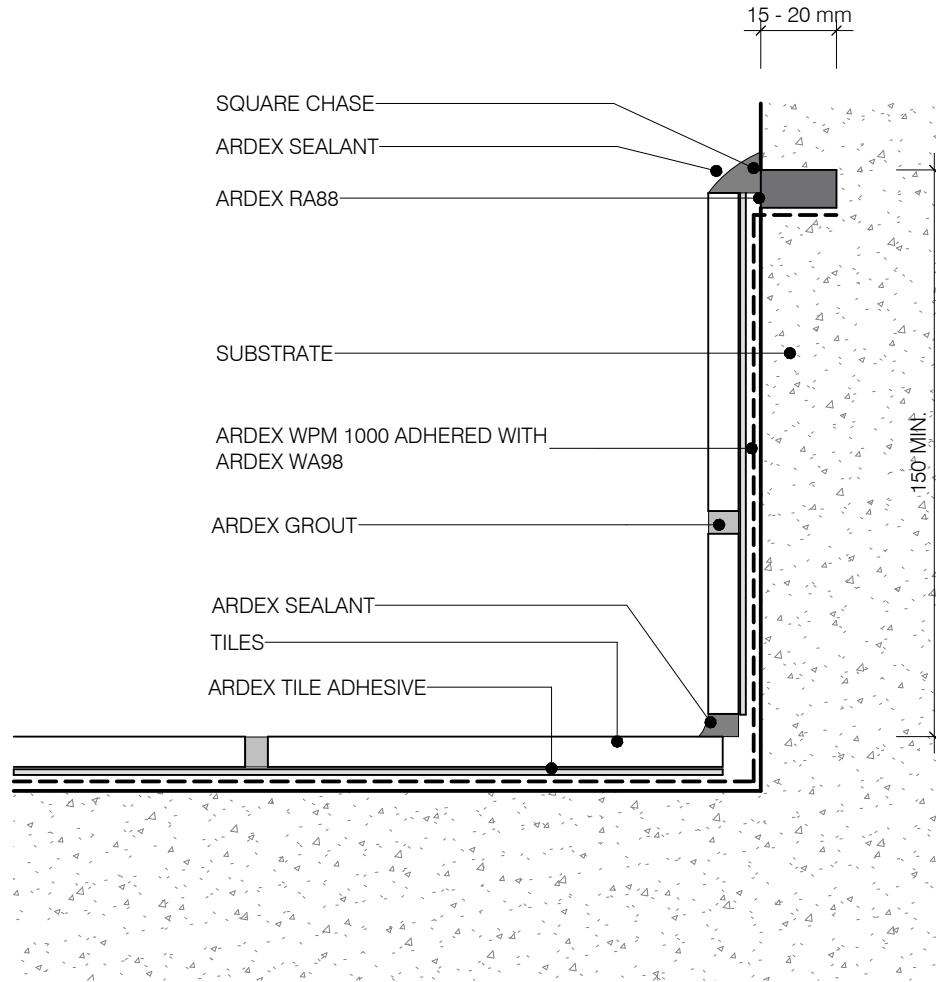
ARDEX WPM 1000

SPOUTING SHEET TITLE

DWG NO. **WT-07**
 DATE 13/07/2022
 SCALE 1 : 2 @ A4



Disclaimer: Ardex makes every reasonable effort to ensure that the technical details, recommendations and other information contained in this drawing are accurate and represent our knowledge and experience at the time of design and publication. Ardex reserves the right to change the information without prior notice. Ardex provides the information in good faith with no representations or warranties (whether implied or otherwise), and will not be liable for any losses or damages (whether direct, indirect or consequential) whatsoever, whether in contract, negligence or any other action, arising out of or in connection with the use, or inability to use, the information. It is your responsibility to ensure that our products are used only for the purposes for which they are intended and are used in accordance with any applicable specifications, guidelines, standards, codes of practice, regulations and laws. The supply of our products and services are also subject to certain terms, warranties and exclusions which are available on request.



NOTE:
 ARDEX WPM 1000 IS ADHERED WITH ARDEX WA98 ADHESIVE INTO SQUARE CHASE AND FINISHED WITH ARDEX RA88 SEALANT

NOTE:
 WPM 1000 MUST NOT BE LEFT EXPOSED.
 SUITABLE OVERLAYING SYSTEMS INCLUDE:
 TILES DIRECTLY BONDED.
 TILES ON ARDEX UD150.
 TILES/PAVERS ON SUPPORT JACKS.
 ANY EXPOSED ARDEX WPM 1000 MUST BE COATED WITH ARDEX WPM 170 OR A COVER STRIP OF WPM 715 APPLIED.

ARDEX WPM 1000

FLASHING INTO CONCRETE WALLS - CHASE

SHEET TITLE

DWG NO.

WT-09

DATE

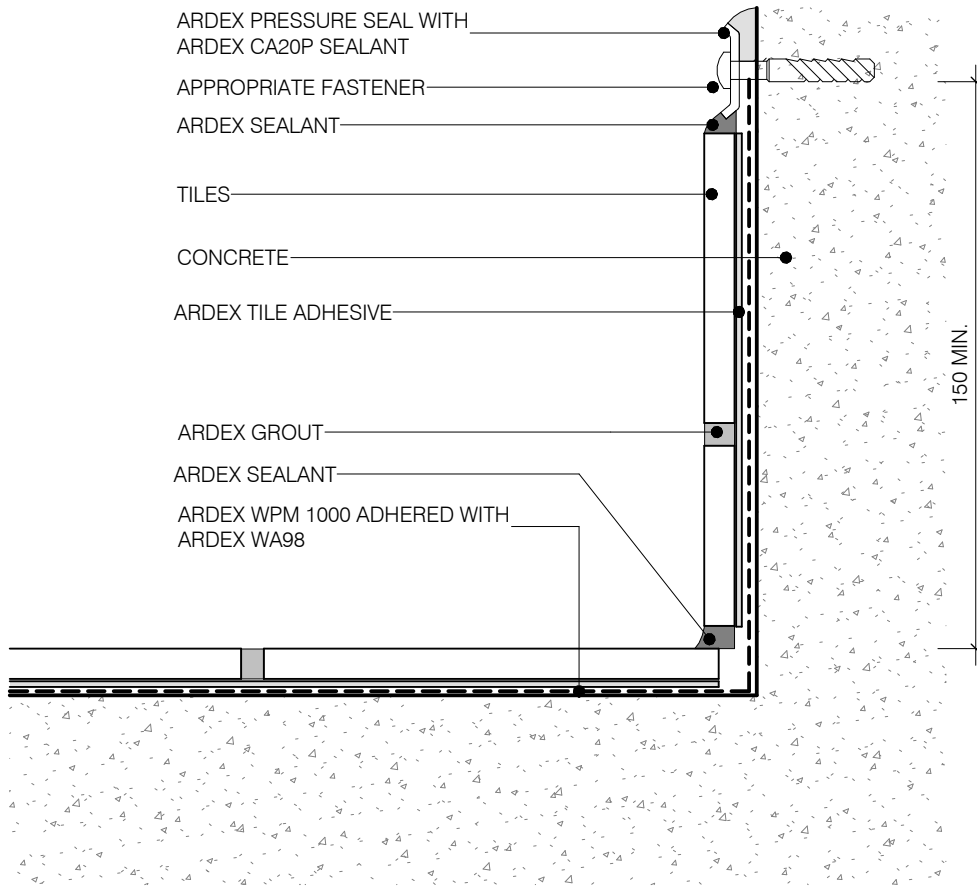
13/07/2022

SCALE

1 : 2 @ A4



Disclaimer: Ardex makes every reasonable effort to ensure that the technical details, recommendations and other information contained in this drawing are accurate and represent our knowledge and experience at the time of design and publication. Ardex reserves the right to change the information without prior notice. Ardex provides the information in good faith with no representations or warranties (whether implied or otherwise), and will not be liable for any losses or damages (whether direct, indirect or consequential) whatsoever, whether in contract, negligence or any other action, arising out of or in connection with the use, or inability to use, the information. It is your responsibility to ensure that our products are used only for the purposes for which they are intended and are used in accordance with any applicable specifications, guidelines, standards, codes of practice, regulations and laws. The supply of our products and services are also subject to certain terms, warranties and exclusions which are available on request.



NOTE:
 WPM 1000 MUST NOT BE LEFT EXPOSED.
 SUITABLE OVERLAYING SYSTEMS INCLUDE:
 TILES DIRECTLY BONDED.
 TILES ON ARDEX UD150.
 TILES/PAVERS ON SUPPORT JACKS.
 ANY EXPOSED ARDEX WPM 1000 MUST BE COATED WITH ARDEX WPM 170 OR A COVER STRIP OF WPM 715 APPLIED.

ARDEX WPM 1000

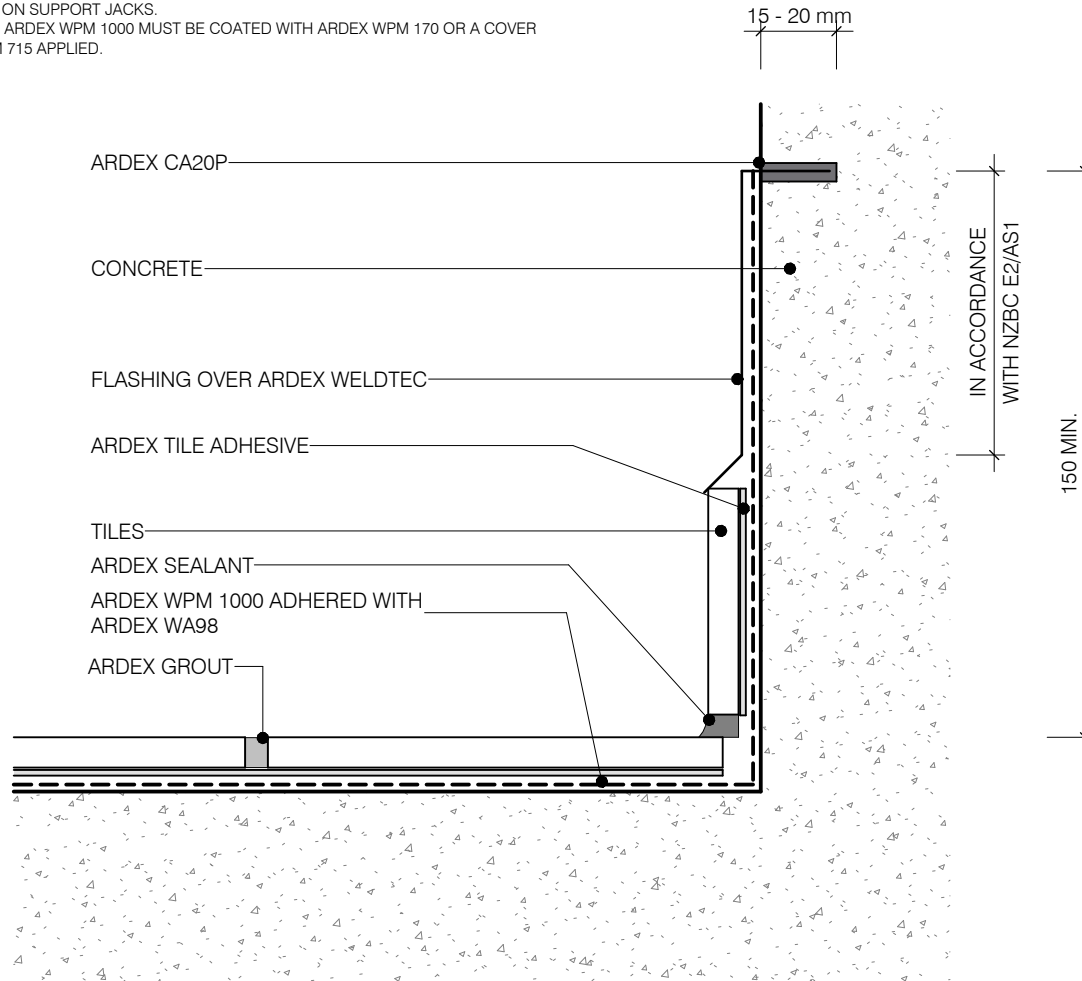
FLASHING INTO CONCRETE WALLS - MECHANICAL SHEET TITLE

DWG NO. **WT-10**
 DATE 13/07/2022
 SCALE 1 : 2 @ A4



Disclaimer: Ardex makes every reasonable effort to ensure that the technical details, recommendations and other information contained in this drawing are accurate and represent our knowledge and experience at the time of design and publication. Ardex reserves the right to change the information without prior notice. Ardex provides the information in good faith with no representations or warranties (whether implied or otherwise), and will not be liable for any losses or damages (whether direct, indirect or consequential) whatsoever, whether in contract, negligence or any other action, arising out of or in connection with the use, or inability to use, the information. It is your responsibility to ensure that our products are used only for the purposes for which they are intended and are used in accordance with any applicable specifications, guidelines, standards, codes of practice, regulations and laws. The supply of our products and services are also subject to certain terms, warranties and exclusions which are available on request.

NOTE:
 WPM 1000 MUST NOT BE LEFT EXPOSED.
 SUITABLE OVERLAYING SYSTEMS INCLUDE:
 TILES DIRECTLY BONDED.
 TILES ON ARDEX UD150.
 TILES/PAVERS ON SUPPORT JACKS.
 ANY EXPOSED ARDEX WPM 1000 MUST BE COATED WITH ARDEX WPM 170 OR A COVER STRIP OF WPM 715 APPLIED.



NOTE:
 ARDEX WPM 1000 IS ADHERED WITH WA 98
 ADHESIVE UPTO THE CHASE. THE FLASHING IS
 SEALED INTO THE CHASE USING ARDEX RA88.

ARDEX WPM 1000

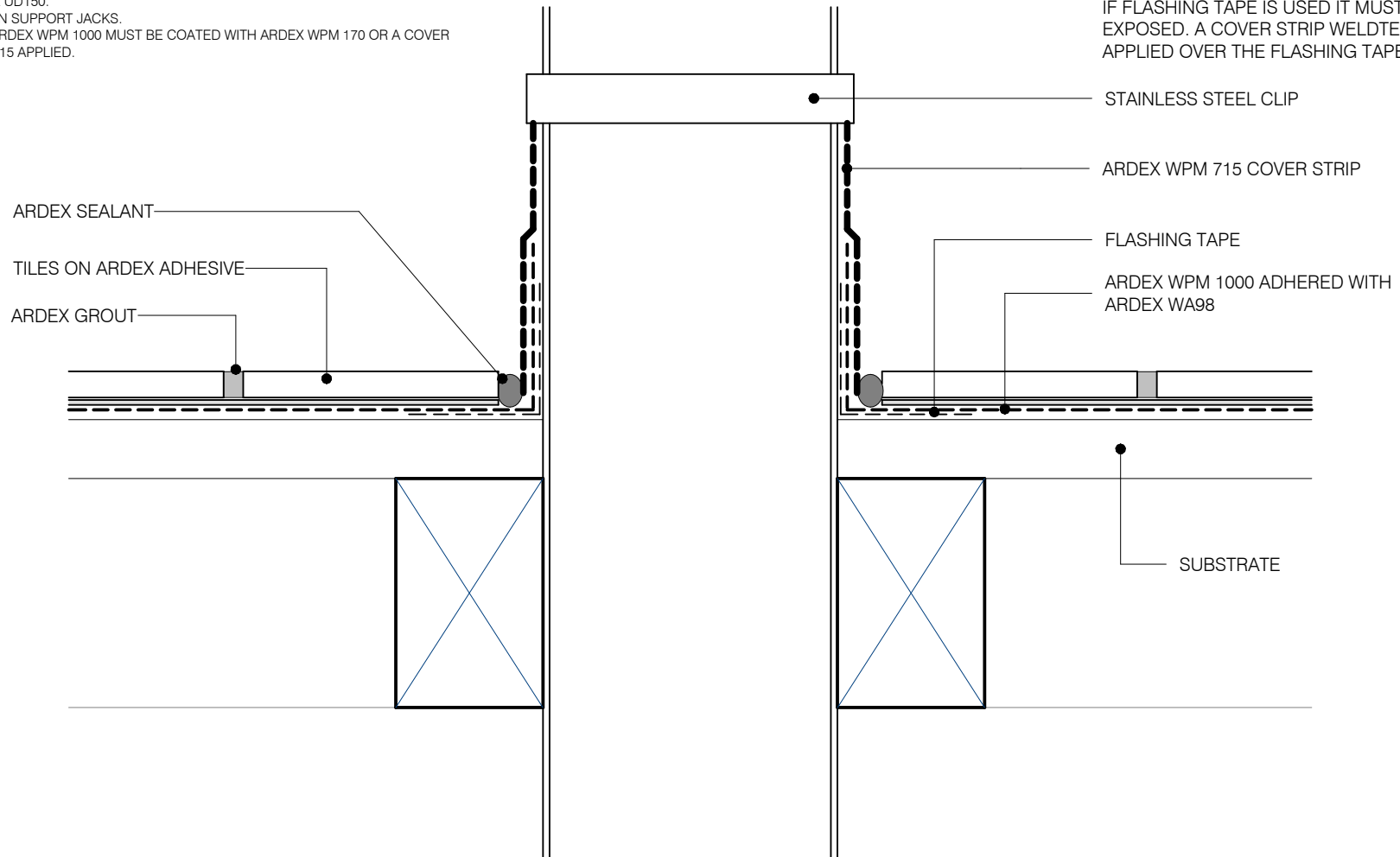
Disclaimer: Ardex makes every reasonable effort to ensure that the technical details, recommendations and other information contained in this drawing are accurate and represent our knowledge and experience at the time of design and publication. Ardex reserves the right to change the information without prior notice. Ardex provides the information in good faith with no representations or warranties (whether implied or otherwise), and will not be liable for any losses or damages (whether direct, indirect or consequential) whatsoever, whether in contract, negligence or any other action, arising out of or in connection with the use, or inability to use, the information. It is your responsibility to ensure that our products are used only for the purposes for which they are intended and are used in accordance with any applicable specifications, guidelines, standards, codes of practice, regulations and laws. The supply of our products and services are also subject to certain terms, warranties and exclusions which are available on request.

FLASHING INTO CONCRETE WALLS - FLASHING SHEET TITLE

DWG NO. **WT-11**
 DATE 13/07/2022
 SCALE 1 : 2 @ A4



NOTE:
 WPM 1000 MUST NOT BE LEFT EXPOSED.
 SUITABLE OVERLAYING SYSTEMS INCLUDE:
 TILES DIRECTLY BONDED.
 TILES ON ARDEX UD150.
 TILES/PAVERS ON SUPPORT JACKS.
 ANY EXPOSED ARDEX WPM 1000 MUST BE COATED WITH ARDEX WPM 170 OR A COVER STRIP OF WPM 715 APPLIED.



NOTE:
 IF FLASHING TAPE IS USED IT MUST NOT BE LEFT EXPOSED. A COVER STRIP WELDTEC MUST BE APPLIED OVER THE FLASHING TAPE TO FINISH

ARDEX WPM 1000

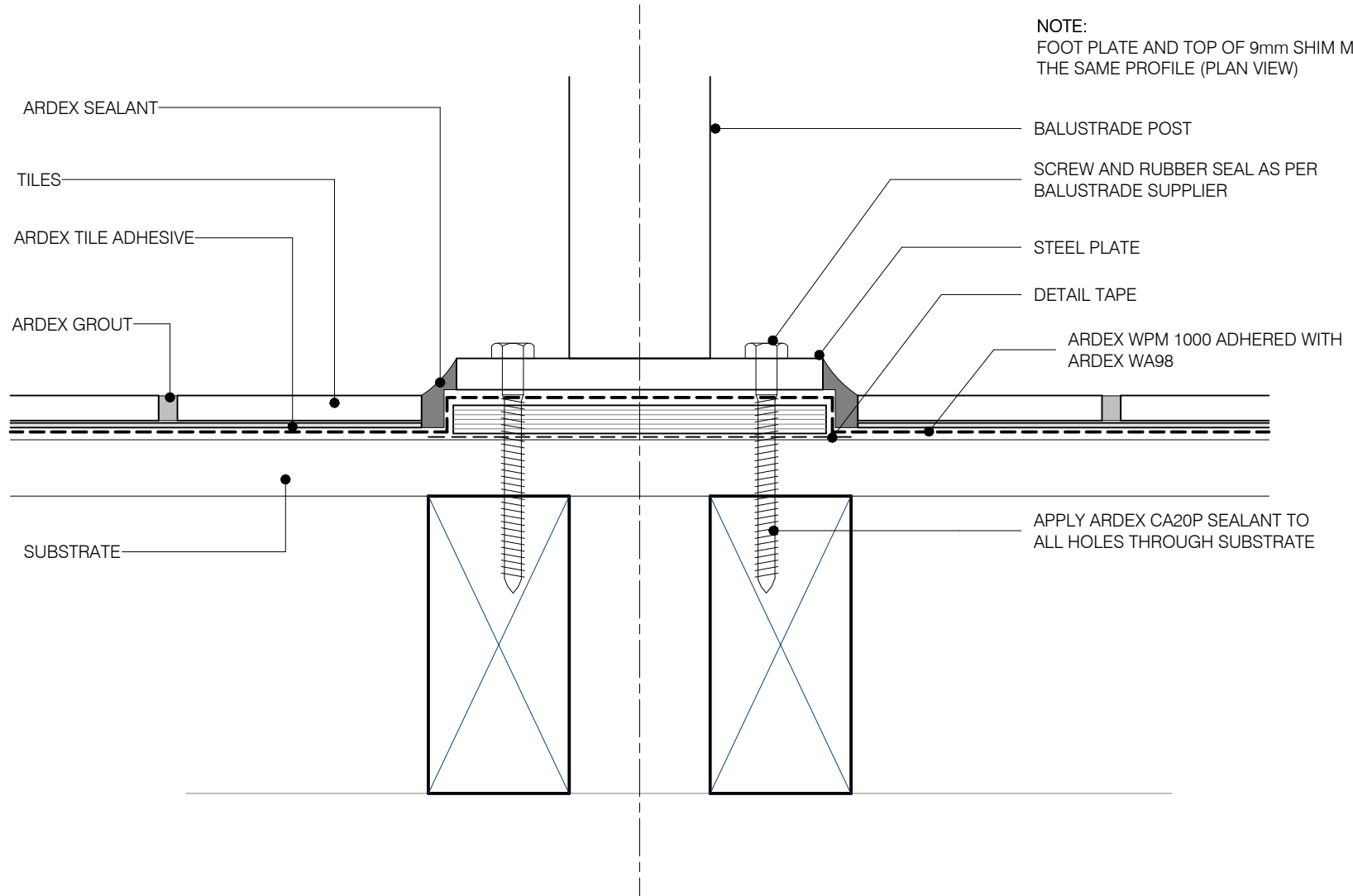
PIPE PENETRATION SHEET TITLE

DWG NO. **WT-12**
 DATE 13/07/2022
 SCALE 1 : 2 @ A4



Disclaimer: Ardex makes every reasonable effort to ensure that the technical details, recommendations and other information contained in this drawing are accurate and represent our knowledge and experience at the time of design and publication. Ardex reserves the right to change the information without prior notice. Ardex provides the information in good faith with no representations or warranties (whether implied or otherwise), and will not be liable for any losses or damages (whether direct, indirect or consequential) whatsoever, whether in contract, negligence or any other action, arising out of or in connection with the use, or inability to use, the information. It is your responsibility to ensure that our products are used only for the purposes for which they are intended and are used in accordance with any applicable specifications, guidelines, standards, codes of practice, regulations and laws. The supply of our products and services are also subject to certain terms, warranties and exclusions which are available on request.

NOTE:
 WPM 1000 MUST NOT BE LEFT EXPOSED.
 SUITABLE OVERLAYING SYSTEMS INCLUDE:
 TILES DIRECTLY BONDED.
 TILES ON ARDEX UD150.
 TILES/PAVERS ON SUPPORT JACKS.
 ANY EXPOSED ARDEX WPM 1000 MUST BE COATED WITH ARDEX WPM 170 OR A COVER STRIP OF WPM 715 APPLIED.



NOTE:
 FOOT PLATE AND TOP OF 9mm SHIM MUST BE THE SAME PROFILE (PLAN VIEW)

ARDEX WPM 1000

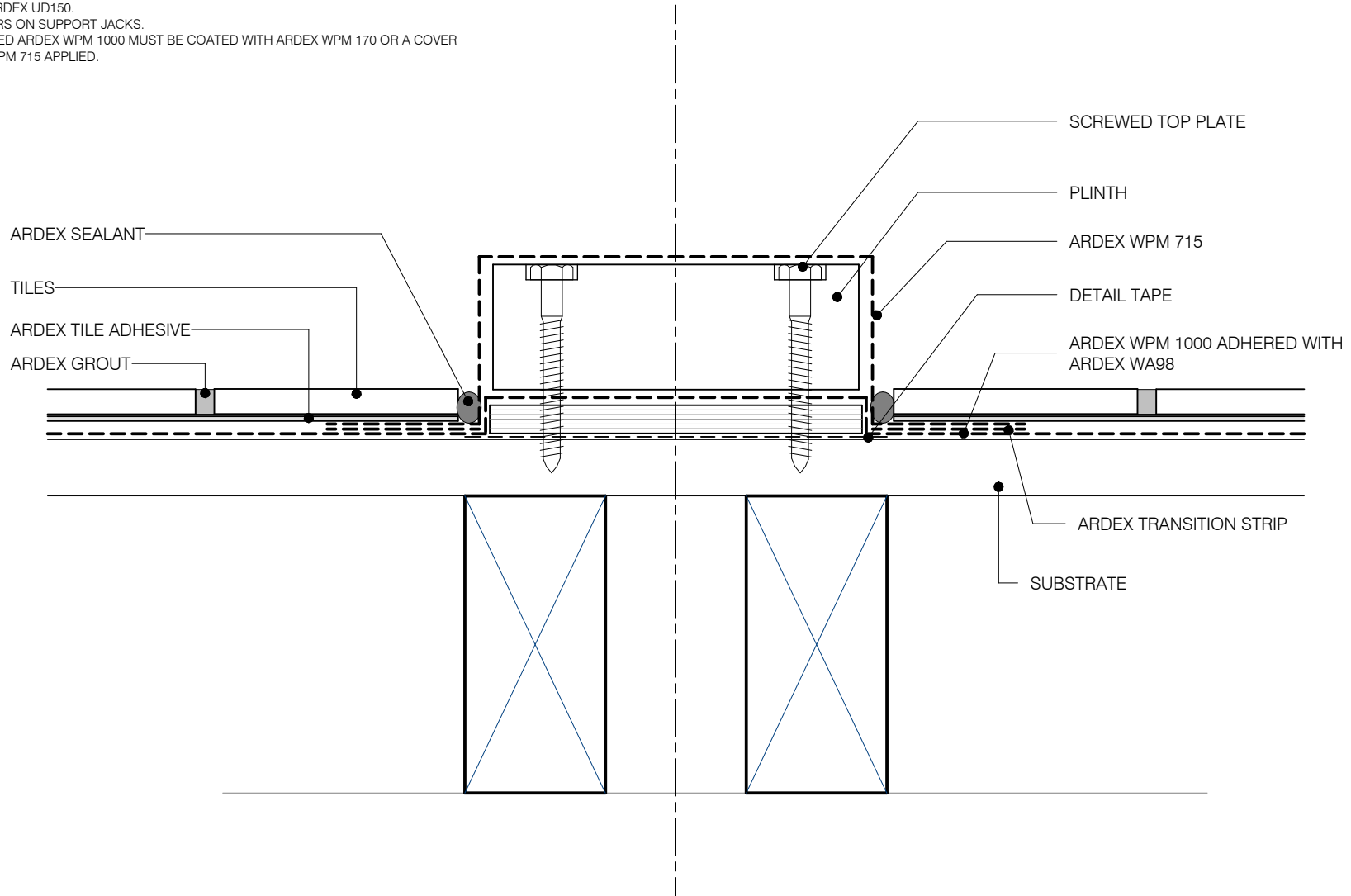
TOP FIXED BALUSTRADE SHEET TITLE

DWG NO. **WT-13**
 DATE 13/07/2022
 SCALE 1 : 2 @ A4



Disclaimer: Ardex makes every reasonable effort to ensure that the technical details, recommendations and other information contained in this drawing are accurate and represent our knowledge and experience at the time of design and publication. Ardex reserves the right to change the information without prior notice. Ardex provides the information in good faith with no representations or warranties (whether implied or otherwise), and will not be liable for any losses or damages (whether direct, indirect or consequential) whatsoever, whether in contract, negligence or any other action, arising out of or in connection with the use, or inability to use, the information. It is your responsibility to ensure that our products are used only for the purposes for which they are intended and are used in accordance with any applicable specifications, guidelines, standards, codes of practice, regulations and laws. The supply of our products and services are also subject to certain terms, warranties and exclusions which are available on request.

NOTE:
 WPM 1000 MUST NOT BE LEFT EXPOSED.
 SUITABLE OVERLAYING SYSTEMS INCLUDE:
 TILES DIRECTLY BONDED.
 TILES ON ARDEX UD150.
 TILES/PAVERS ON SUPPORT JACKS.
 ANY EXPOSED ARDEX WPM 1000 MUST BE COATED WITH ARDEX WPM 170 OR A COVER STRIP OF WPM 715 APPLIED.



ARDEX WPM 1000

PLANT EQUIPMENT SUPPORTS SHEET TITLE

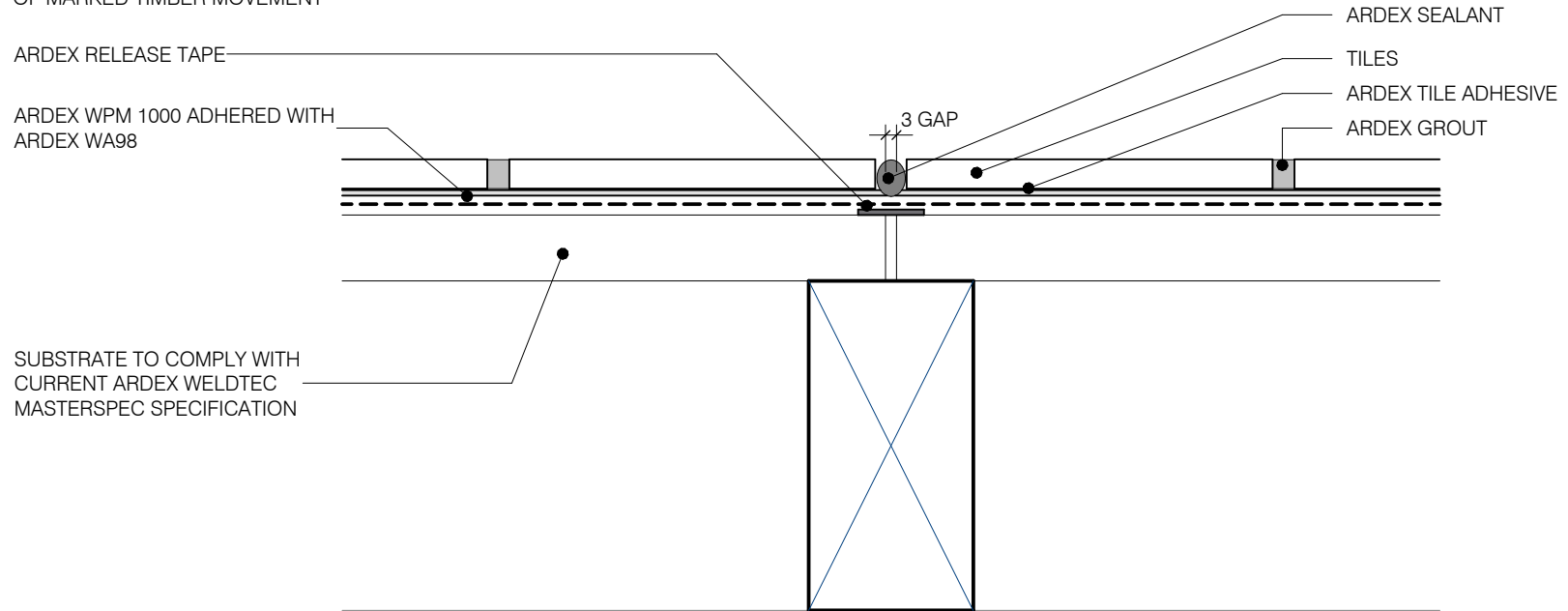
DWG NO. **WT-14**
 DATE 13/07/2022
 SCALE 1 : 2 @ A4



Disclaimer: Ardex makes every reasonable effort to ensure that the technical details, recommendations and other information contained in this drawing are accurate and represent our knowledge and experience at the time of design and publication. Ardex reserves the right to change the information without prior notice. Ardex provides the information in good faith with no representations or warranties (whether implied or otherwise), and will not be liable for any losses or damages (whether direct, indirect or consequential) whatsoever, whether in contract, negligence or any other action, arising out of or in connection with the use, or inability to use, the information. It is your responsibility to ensure that our products are used only for the purposes for which they are intended and are used in accordance with any applicable specifications, guidelines, standards, codes of practice, regulations and laws. The supply of our products and services are also subject to certain terms, warranties and exclusions which are available on request.

NOTE:
 ALL JOINTS BETWEEN SUBSTRATE SHEETS OF PLYWOOD SHOULD BE TAPED TO PREVENT STRESSING OF THE ARDEX WPM 1000 IN CASE OF MARKED TIMBER MOVEMENT

NOTE:
 WPM 1000 MUST NOT BE LEFT EXPOSED.
 SUITABLE OVERLAYING SYSTEMS INCLUDE:
 TILES DIRECTLY BONDED.
 TILES ON ARDEX UD150.
 TILES/PAVERS ON SUPPORT JACKS.
 ANY EXPOSED ARDEX WPM 1000 MUST BE COATED WITH ARDEX WPM 170 OR A COVER STRIP OF WPM 715 APPLIED.



ARDEX WPM 1000

TAPING SUBSTRATE SHEET TITLE

DWG NO. **WT-15**

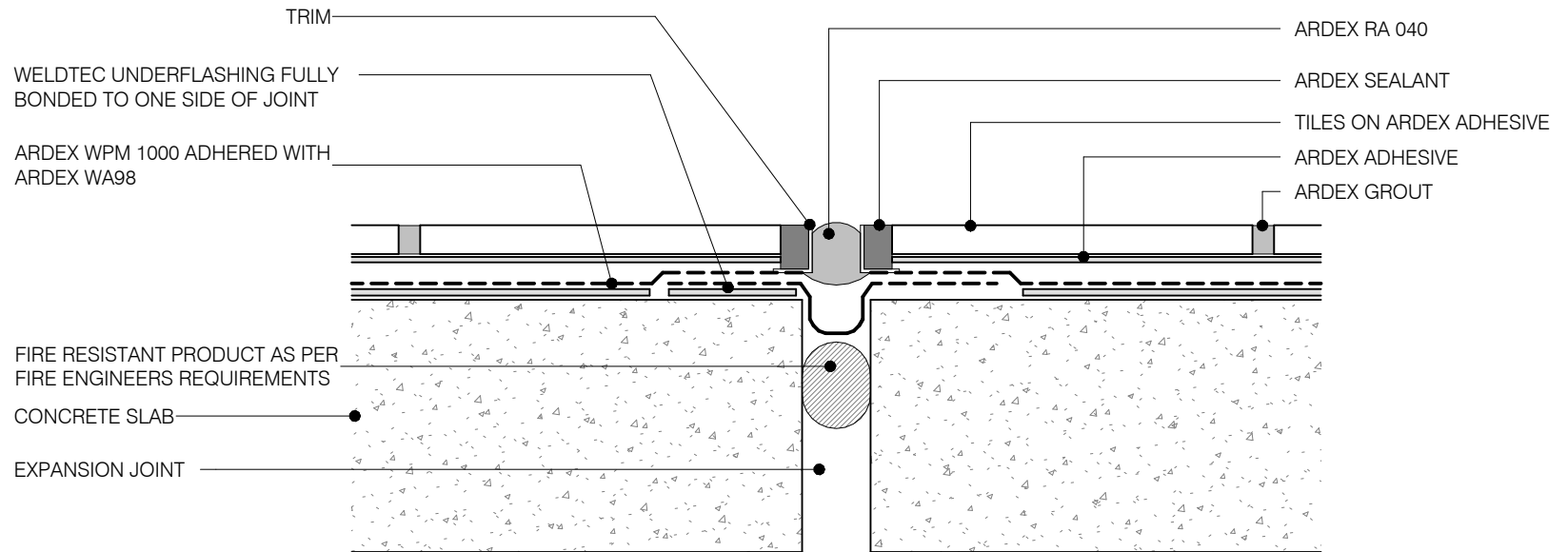
DATE 13/07/2022

SCALE 1 : 2 @ A4



Disclaimer: Ardex makes every reasonable effort to ensure that the technical details, recommendations and other information contained in this drawing are accurate and represent our knowledge and experience at the time of design and publication. Ardex reserves the right to change the information without prior notice. Ardex provides the information in good faith with no representations or warranties (whether implied or otherwise), and will not be liable for any losses or damages (whether direct, indirect or consequential) whatsoever, whether in contract, negligence or any other action, arising out of or in connection with the use, or inability to use, the information. It is your responsibility to ensure that our products are used only for the purposes for which they are intended and are used in accordance with any applicable specifications, guidelines, standards, codes of practice, regulations and laws. The supply of our products and services are also subject to certain terms, warranties and exclusions which are available on request.

NOTE:
 WPM 1000 MUST NOT BE LEFT EXPOSED.
 SUITABLE OVERLAYING SYSTEMS INCLUDE:
 TILES DIRECTLY BONDED.
 TILES ON ARDEX UD150.
 TILES/PAVERS ON SUPPORT JACKS.
 ANY EXPOSED ARDEX WPM 1000 MUST BE COATED WITH ARDEX WPM 170 OR A COVER STRIP OF WPM 715 APPLIED.



ARDEX WPM 1000

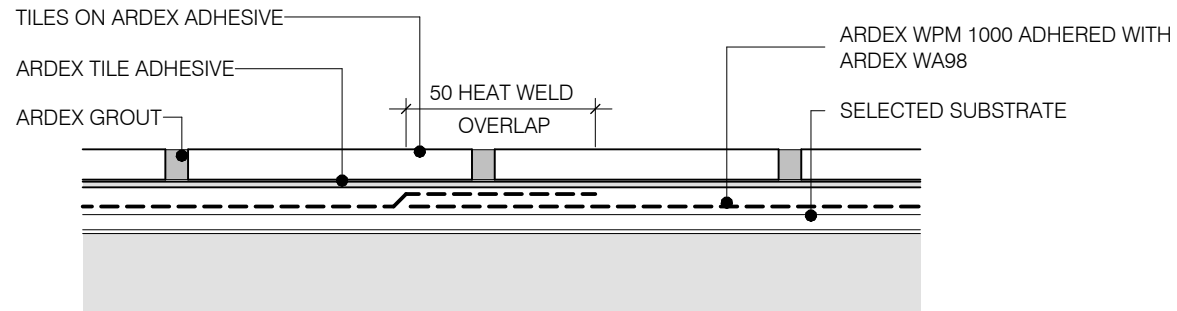
SEISMIC JOINT SHEET TITLE

DWG NO. **WT-16**
 DATE 13/07/2022
 SCALE 1 : 2 @ A4



Disclaimer: Ardex makes every reasonable effort to ensure that the technical details, recommendations and other information contained in this drawing are accurate and represent our knowledge and experience at the time of design and publication. Ardex reserves the right to change the information without prior notice. Ardex provides the information in good faith with no representations or warranties (whether implied or otherwise), and will not be liable for any losses or damages (whether direct, indirect or consequential) whatsoever, whether in contract, negligence or any other action, arising out of or in connection with the use, or inability to use, the information. It is your responsibility to ensure that our products are used only for the purposes for which they are intended and are used in accordance with any applicable specifications, guidelines, standards, codes of practice, regulations and laws. The supply of our products and services are also subject to certain terms, warranties and exclusions which are available on request.

NOTE:
 WPM 1000 MUST NOT BE LEFT EXPOSED.
 SUITABLE OVERLAYING SYSTEMS INCLUDE:
 TILES DIRECTLY BONDED.
 TILES ON ARDEX UD150.
 TILES/PAVERS ON SUPPORT JACKS.
 ANY EXPOSED ARDEX WPM 1000 MUST BE COATED WITH ARDEX WPM 170 OR A COVER STRIP OF WPM 715 APPLIED.



ARDEX WPM 1000

Disclaimer: Ardex makes every reasonable effort to ensure that the technical details, recommendations and other information contained in this drawing are accurate and represent our knowledge and experience at the time of design and publication. Ardex reserves the right to change the information without prior notice. Ardex provides the information in good faith with no representations or warranties (whether implied or otherwise), and will not be liable for any losses or damages (whether direct, indirect or consequential) whatsoever, whether in contract, negligence or any other action, arising out of or in connection with the use, or inability to use, the information. It is your responsibility to ensure that our products are used only for the purposes for which they are intended and are used in accordance with any applicable specifications, guidelines, standards, codes of practice, regulations and laws. The supply of our products and services are also subject to certain terms, warranties and exclusions which are available on request.

TYPICAL MEMBRANE LAP & LAYERS SHEET TITLE

DWG NO. **WT-17**
 DATE 13/07/2022
 SCALE 1 : 2 @ A4

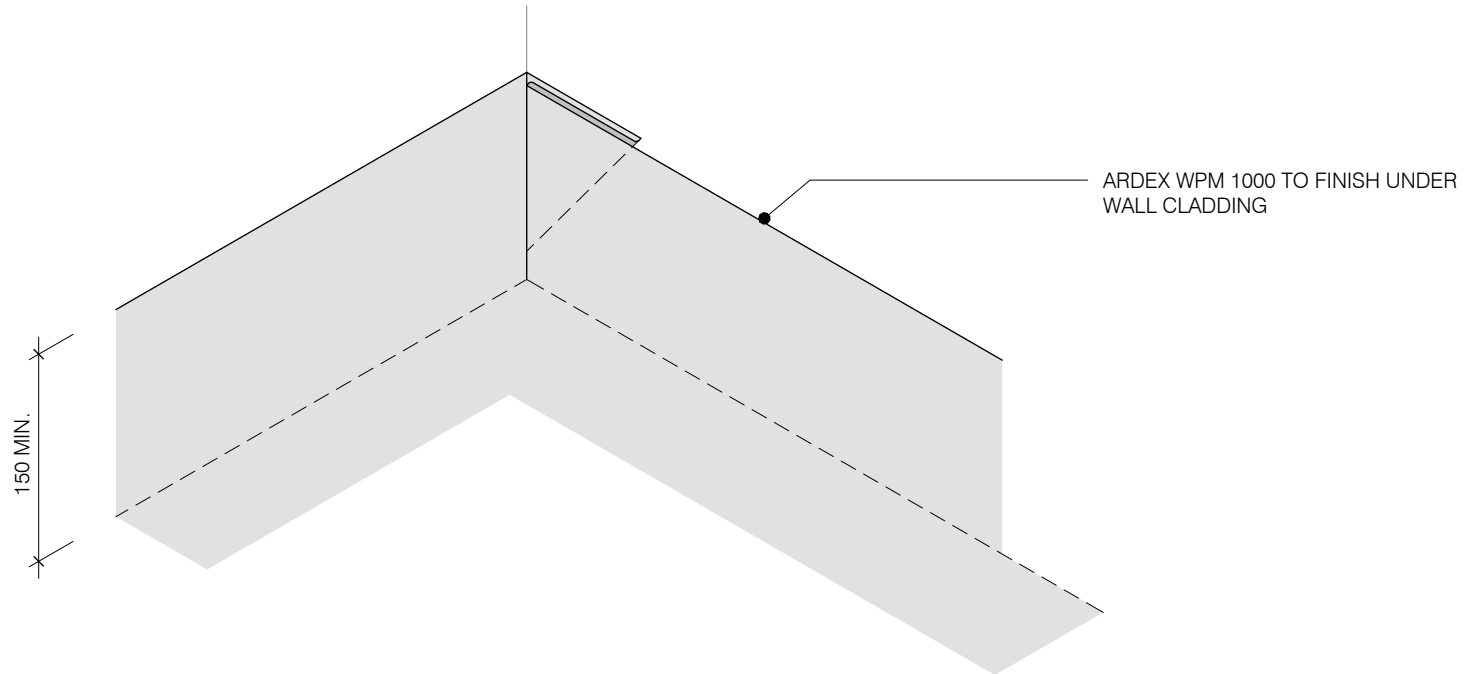


NOTE:

WPM 1000 MUST NOT BE LEFT EXPOSED.
SUITABLE OVERLAYING SYSTEMS INCLUDE:
TILES DIRECTLY BONDED.
TILES ON ARDEX UD150.
TILES/PAVERS ON SUPPORT JACKS.
ANY EXPOSED ARDEX WPM 1000 MUST BE COATED WITH ARDEX WPM 170 OR A COVER STRIP OF WPM 715 APPLIED.

NOTE:

WITHOUT CUTTING ARDEX WPM 1000
SIMPLY FOLD A 'PIG'S EAR' CORNER AS
SHOWN. THE ANGLE FOLD SHOULD BE
BEHIND THE MAIN SHEET AND WELDED
FLAT.



ARDEX WPM 1000

3D - INTERNAL CORNER

SHEET TITLE

DWG NO.

WT-18

DATE

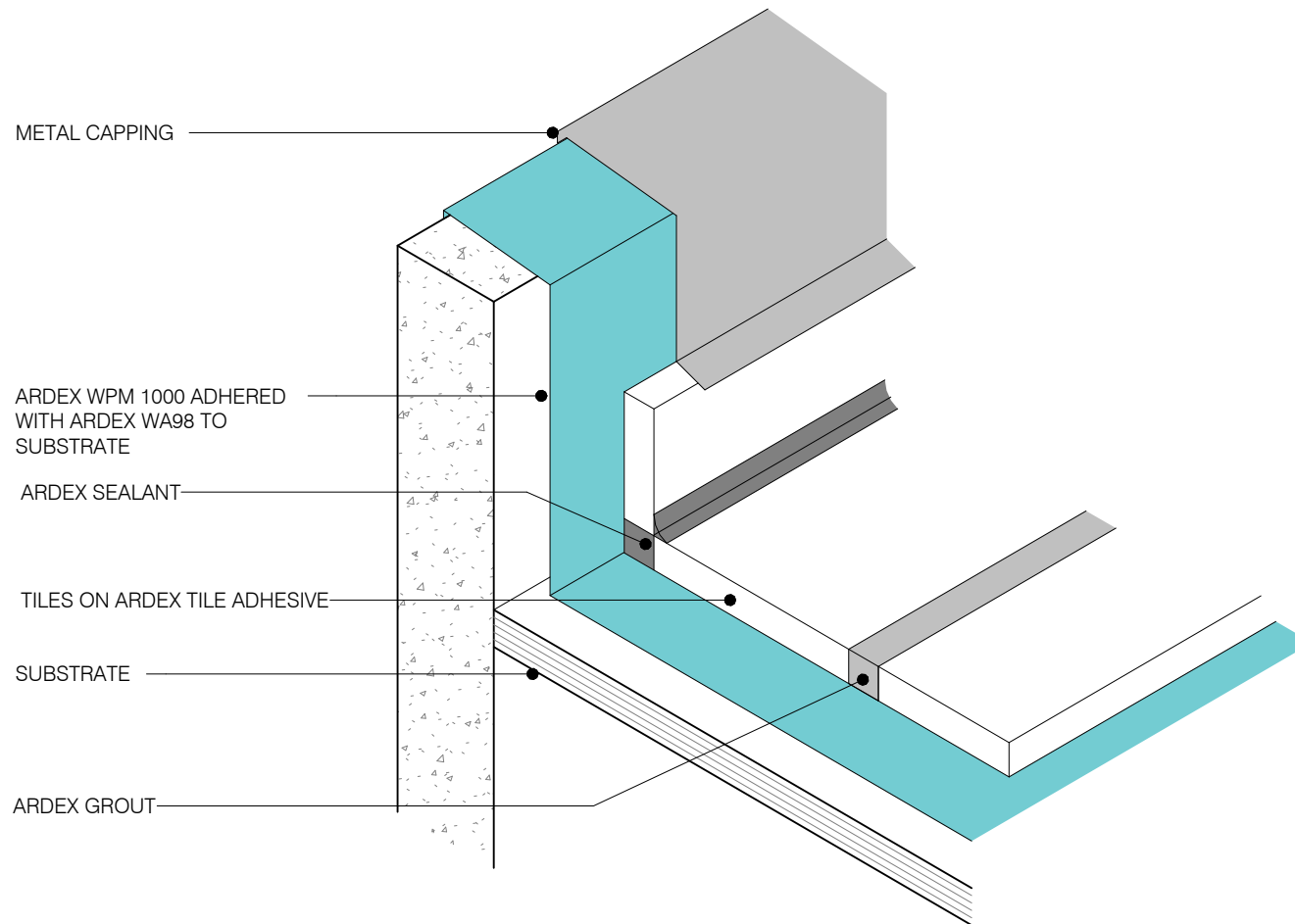
13/07/2022

SCALE

NOT TO SCALE



Disclaimer: Ardex makes every reasonable effort to ensure that the technical details, recommendations and other information contained in this drawing are accurate and represent our knowledge and experience at the time of design and publication. Ardex reserves the right to change the information without prior notice. Ardex provides the information in good faith with no representations or warranties (whether implied or otherwise), and will not be liable for any losses or damages (whether direct, indirect or consequential) whatsoever, whether in contract, negligence or any other action, arising out of or in connection with the use, or inability to use, the information. It is your responsibility to ensure that our products are used only for the purposes for which they are intended and are used in accordance with any applicable specifications, guidelines, standards, codes of practice, regulations and laws. The supply of our products and services are also subject to certain terms, warranties and exclusions which are available on request.



ARDEX WPM 1000

Disclaimer: Ardex makes every reasonable effort to ensure that the technical details, recommendations and other information contained in this drawing are accurate and represent our knowledge and experience at the time of design and publication. Ardex reserves the right to change the information without prior notice. Ardex provides the information in good faith with no representations or warranties (whether implied or otherwise), and will not be liable for any losses or damages (whether direct, indirect or consequential) whatsoever, whether in contract, negligence or any other action, arising out of or in connection with the use, or inability to use, the information. It is your responsibility to ensure that our products are used only for the purposes for which they are intended and are used in accordance with any applicable specifications, guidelines, standards, codes of practice, regulations and laws. The supply of our products and services are also subject to certain terms, warranties and exclusions which are available on request.

3D - ROOF EDGE MECHANICAL FIXED SHEET TITLE

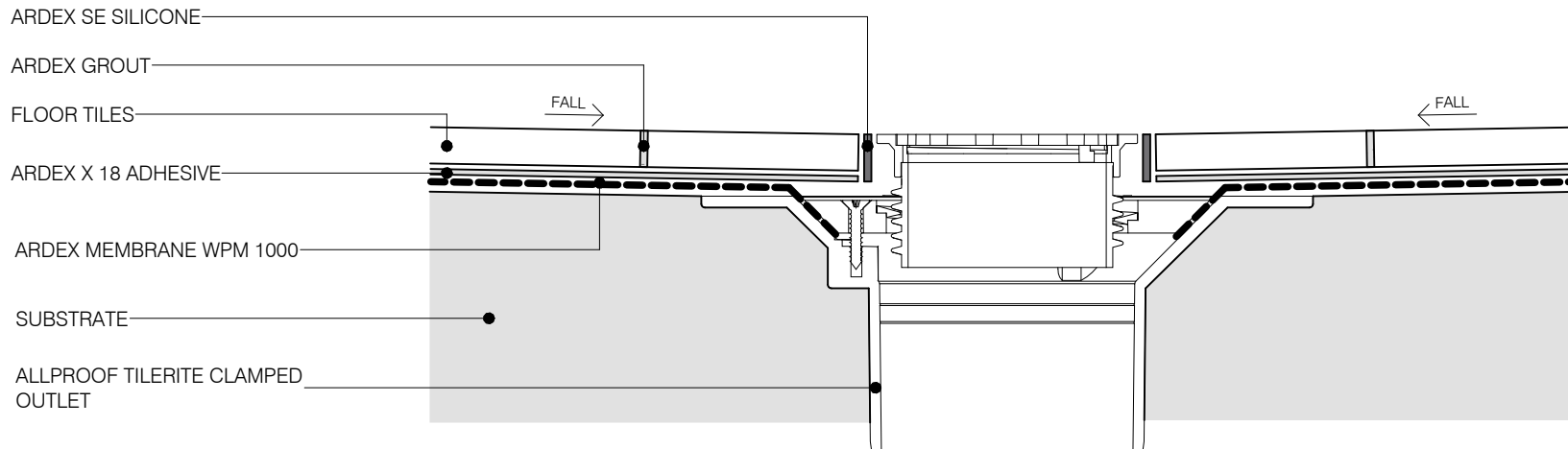
DWG NO. **WT-19**

DATE 13/07/2022

SCALE NOT TO SCALE



NOTE:
 WPM 1000 MUST NOT BE LEFT EXPOSED.
 SUITABLE OVERLAYING SYSTEMS INCLUDE:
 TILES DIRECTLY BONDED.
 TILES ON ARDEX UD150.
 TILES/PAVERS ON SUPPORT JACKS.
 ANY EXPOSED ARDEX WPM 1000 MUST BE COATED WITH ARDEX WPM 170 OR A COVER STRIP OF WPM 715 APPLIED.



ARDEX WPM 1000

Disclaimer: Ardex makes every reasonable effort to ensure that the technical details, recommendations and other information contained in this drawing are accurate and represent our knowledge and experience at the time of design and publication. Ardex reserves the right to change the information without prior notice. Ardex provides the information in good faith with no representations or warranties (whether implied or otherwise), and will not be liable for any losses or damages (whether direct, indirect or consequential) whatsoever, whether in contract, negligence or any other action, arising out of or in connection with the use, or inability to use, the information. It is your responsibility to ensure that our products are used only for the purposes for which they are intended and are used in accordance with any applicable specifications, guidelines, standards, codes of practice, regulations and laws. The supply of our products and services are also subject to certain terms, warranties and exclusions which are available on request.

WPM 1000 CLAMP WASTE
 SHEET TITLE

DWG NO. **WT-20**
 DATE 13/07/2022
 SCALE 1 : 2 @ A4

