

ARDEX WET AREA WATERPROOFING DRAWING LIST

DRAWING NO.	SHEET TITLE	DATE
AWW-00	DRAWING LIST	03.2026
AWW-01	TYPICAL PREFORMED SHOWER BASE WALL/FLOOR JUNCTION	03.2026
AWW-02	TYPICAL PREFORMED SHOWER BASE/FLOOR JUNCTION	03.2026
AWW-03	BATH/WALL JUNCTION - RECESSED	03.2026
AWW-04	BATH/WALL JUNCTION - BATTENED	03.2026
AWW-05	BATH WITH RIM	03.2026
AWW-06	BATH WITHOUT RIM	03.2026
AWW-07	TYPICAL DETAIL FOR RECESSED SOAP HOLDERS	03.2026
AWW-08	ENCLOSED SHOWER - MEMBRANE BELOW TILE BED	03.2026
AWW-09	UNENCLOSED SHOWER - MEMBRANE BELOW TILE BED	03.2026
AWW-10	UNENCLOSED SHOWER - MEMBRANE ABOVE TILE BED	03.2026
AWW-11	TYPICAL HOBLESS CONSTRUCTION	03.2026
AWW-12	TYPICAL MEMBRANE TERMINATION AT DRAINAGE FLANGE	03.2026
AWW-13	WPM 750 CLAMP WASTE	03.2026
AWW-14	TYPICAL MEMBRANE TERMINATION AT DRAINAGE CHANNEL	03.2026
AWW-15	TILE TERMINATION AT DRAINAGE FLANGE WITH SOUNDPROOFING	03.2026
AWW-16	ENCLOSED SHOWER WITH HOB	03.2026
AWW-17	ENCLOSED SHOWER ON FLAT SUBSTRATE	03.2026
AWW-18	NO SHOWER PANEL	03.2026
AWW-19	3D - INTERNAL CORNER	03.2026
AWW-20	WATER STOP	03.2026
AWW-21	WET AREA WALL/FLOOR DETAIL	03.2026
AWW-22	3D - EXTERNAL CORNER	03.2026
AWW-23	TILED FLOOR SOUNDPROOFING WITH WATERPROOFING	03.2026
AWW-24	TYPICAL SHOWER HEAD OR FLEXIBLE HOSE CONNECTION	03.2026
AWW-25	TYPICAL SHOWER MIXER USING PROPRIETARY SYSTEM	03.2026
AWW-26	TYPICAL SHOWER MIXER USING SEALANT	03.2026

WET AREA WATERPROOFING

DRAWING LIST

SHEET TITLE

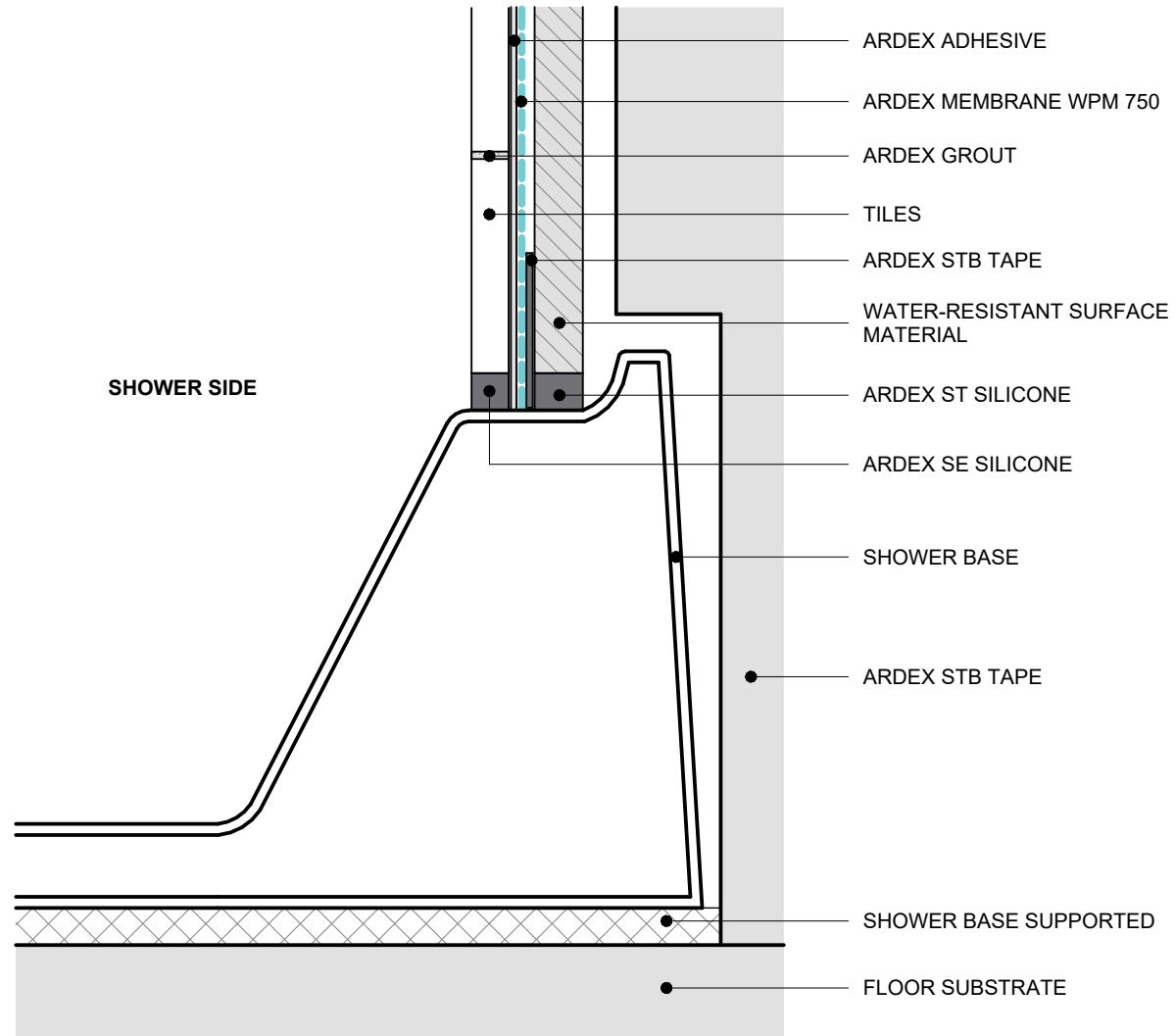
DWG NO. **AWW-00**

DATE **03.2026**

SCALE **@ A4**



Disclaimer: Ardex makes every reasonable effort to ensure that the technical details, recommendations and other information contained in this drawing are accurate and represent our knowledge and experience at the time of design and publication. Ardex reserves the right to change the information without prior notice. Ardex provides the information in good faith with no representations or warranties (whether implied or otherwise), and will not be liable for any losses or damages (whether direct, indirect or consequential) whatsoever, whether in contract, negligence or any other action, arising out of or in connection with the use, or inability to use, the information. It is your responsibility to ensure that our products are used only for the purposes for which they are intended and are used in accordance with any applicable specifications, guidelines, standards, codes of practice, regulations and laws. The supply of our products and services are also subject to certain terms, warranties and exclusions which are available on request.



WET AREA WATERPROOFING

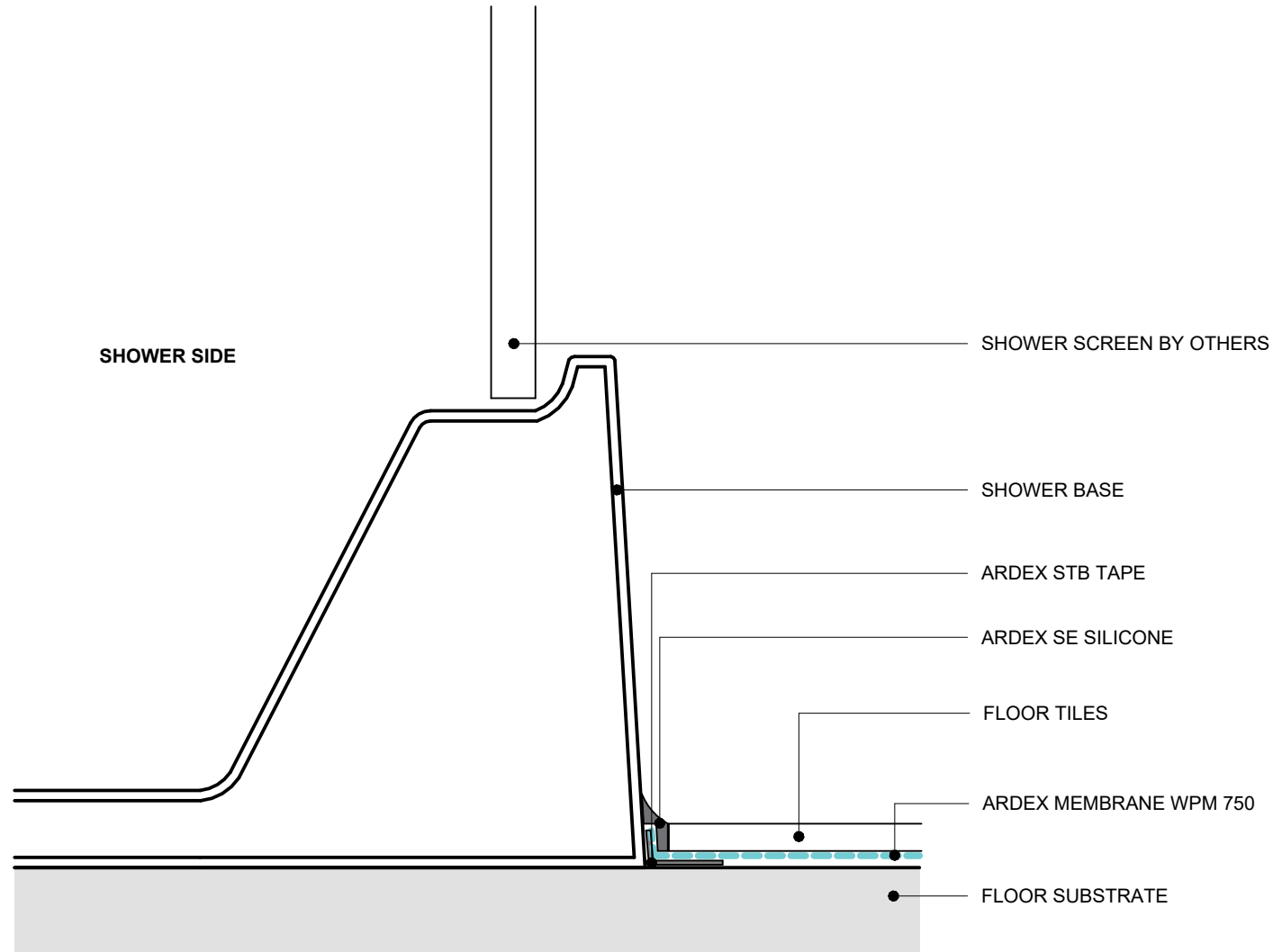
Disclaimer: Ardex makes every reasonable effort to ensure that the technical details, recommendations and other information contained in this drawing are accurate and represent our knowledge and experience at the time of design and publication. Ardex reserves the right to change the information without prior notice. Ardex provides the information in good faith with no representations or warranties (whether implied or otherwise), and will not be liable for any losses or damages (whether direct, indirect or consequential) whatsoever, whether in contract, negligence or any other action, arising out of or in connection with the use, or inability to use, the information. It is your responsibility to ensure that our products are used only for the purposes for which they are intended and are used in accordance with any applicable specifications, guidelines, standards, codes of practice, regulations and laws. The supply of our products and services are also subject to certain terms, warranties and exclusions which are available on request.

TYPICAL PREFORMED SHOWER BASE WALL/FLOOR JUNCTION

DWG NO. **AWW-01**

DATE 03.2026
SCALE 1 : 2 @ A4





WET AREA WATERPROOFING

Disclaimer: Ardex makes every reasonable effort to ensure that the technical details, recommendations and other information contained in this drawing are accurate and represent our knowledge and experience at the time of design and publication. Ardex reserves the right to change the information without prior notice. Ardex provides the information in good faith with no representations or warranties (whether implied or otherwise), and will not be liable for any losses or damages (whether direct, indirect or consequential) whatsoever, whether in contract, negligence or any other action, arising out of or in connection with the use, or inability to use, the information. It is your responsibility to ensure that our products are used only for the purposes for which they are intended and are used in accordance with any applicable specifications, guidelines, standards, codes of practice, regulations and laws. The supply of our products and services are also subject to certain terms, warranties and exclusions which are available on request.

TYPICAL PREFORMED SHOWER BASE/FLOOR JUNCTION

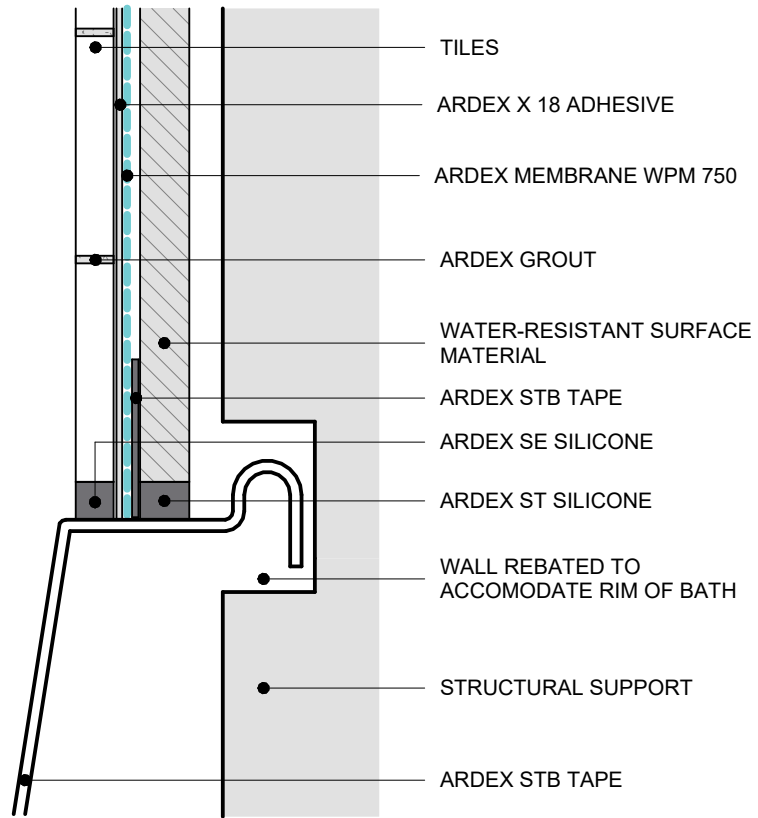
SHEET TITLE

DWG NO. **AWW-02**

DATE 03.2026

SCALE 1 : 2 @ A4





WET AREA WATERPROOFING

Disclaimer: Ardex makes every reasonable effort to ensure that the technical details, recommendations and other information contained in this drawing are accurate and represent our knowledge and experience at the time of design and publication. Ardex reserves the right to change the information without prior notice. Ardex provides the information in good faith with no representations or warranties (whether implied or otherwise), and will not be liable for any losses or damages (whether direct, indirect or consequential) whatsoever, whether in contract, negligence or any other action, arising out of or in connection with the use, or inability to use, the information. It is your responsibility to ensure that our products are used only for the purposes for which they are intended and are used in accordance with any applicable specifications, guidelines, standards, codes of practice, regulations and laws. The supply of our products and services are also subject to certain terms, warranties and exclusions which are available on request.

BATH/WALL JUNCTION - RECESSED

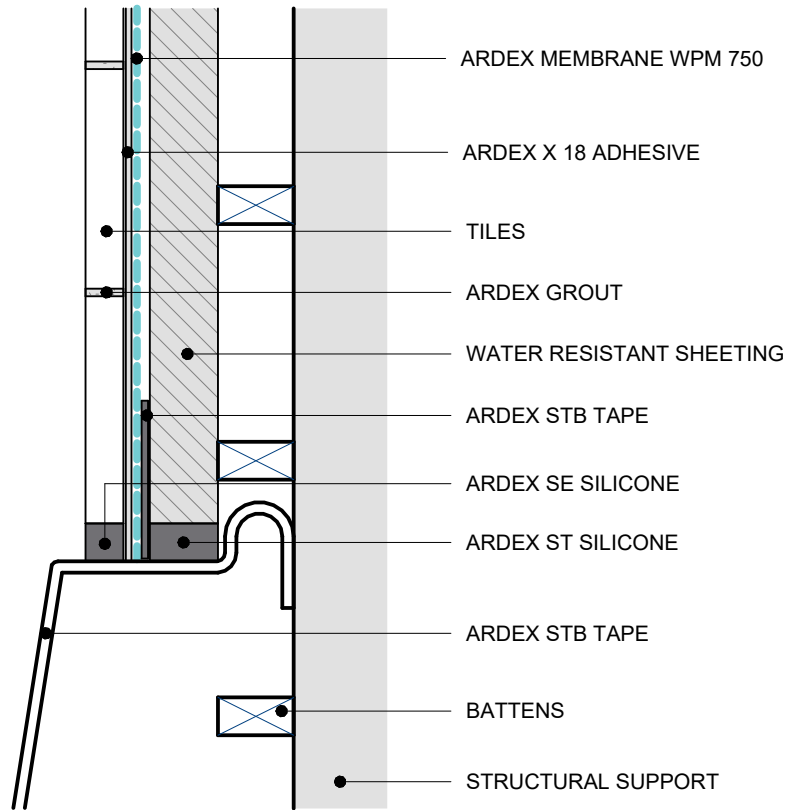
SHEET TITLE

DWG NO. **AWW-03**

DATE 03.2026

SCALE 1 : 2 @ A4





WET AREA WATERPROOFING

BATH/WALL JUNCTION - BATTENED

SHEET TITLE

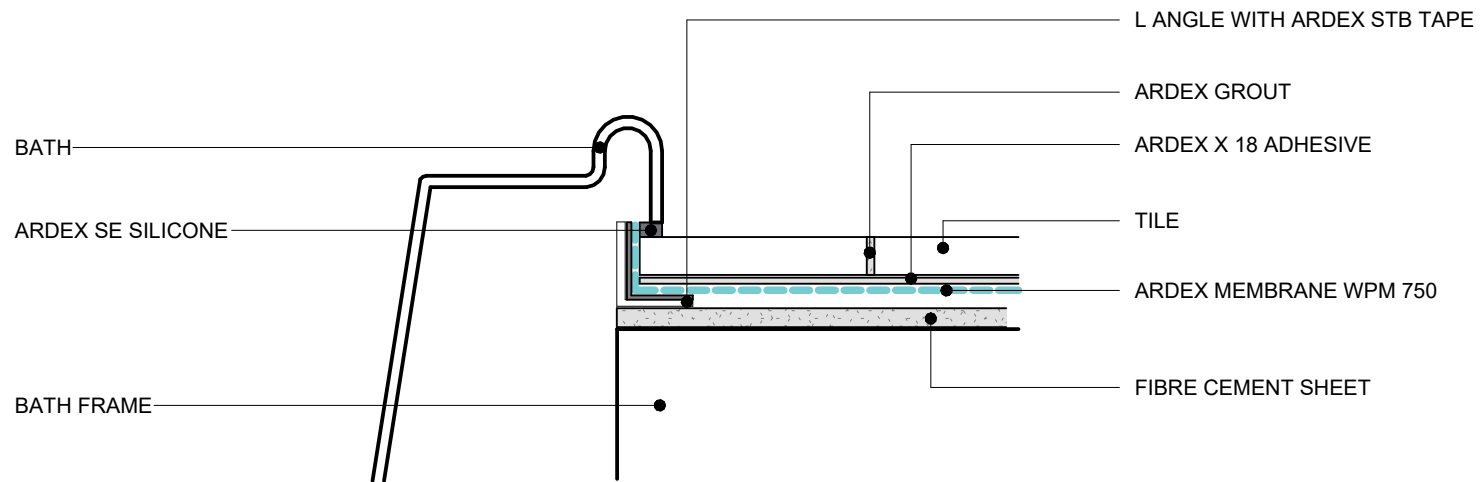
DWG NO. **AWW-04**

DATE 03.2026

SCALE 1 : 2 @ A4



Disclaimer: Ardex makes every reasonable effort to ensure that the technical details, recommendations and other information contained in this drawing are accurate and represent our knowledge and experience at the time of design and publication. Ardex reserves the right to change the information without prior notice. Ardex provides the information in good faith with no representations or warranties (whether implied or otherwise), and will not be liable for any losses or damages (whether direct, indirect or consequential) whatsoever, whether in contract, negligence or any other action, arising out of or in connection with the use, or inability to use, the information. It is your responsibility to ensure that our products are used only for the purposes for which they are intended and are used in accordance with any applicable specifications, guidelines, standards, codes of practice, regulations and laws. The supply of our products and services are also subject to certain terms, warranties and exclusions which are available on request.



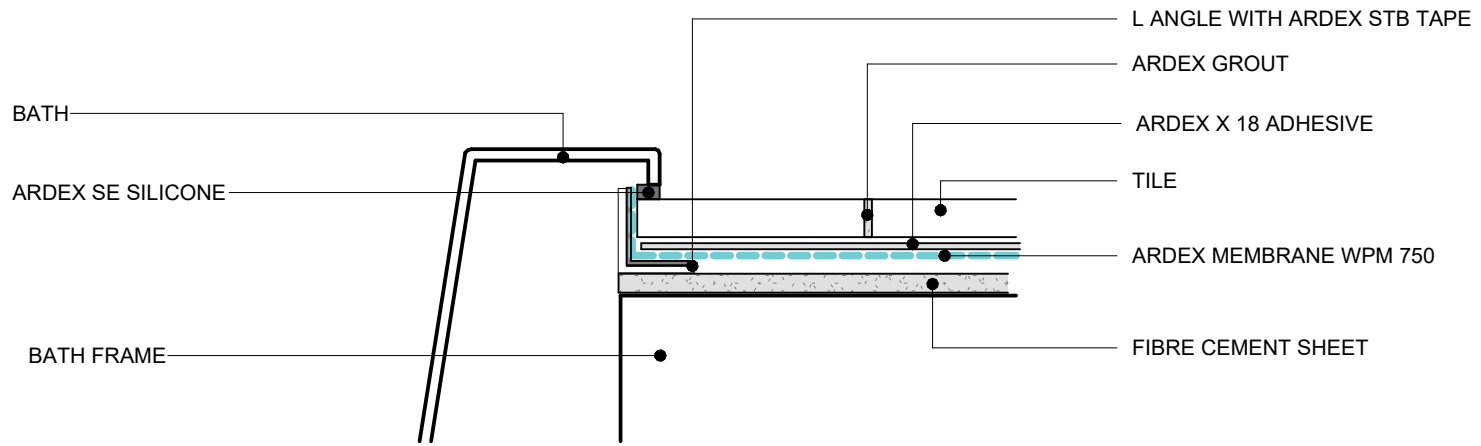
WET AREA WATERPROOFING

BATH WITH RIM SHEET TITLE

Disclaimer: Ardex makes every reasonable effort to ensure that the technical details, recommendations and other information contained in this drawing are accurate and represent our knowledge and experience at the time of design and publication. Ardex reserves the right to change the information without prior notice. Ardex provides the information in good faith with no representations or warranties (whether implied or otherwise), and will not be liable for any losses or damages (whether direct, indirect or consequential) whatsoever, whether in contract, negligence or any other action, arising out of or in connection with the use, or inability to use, the information. It is your responsibility to ensure that our products are used only for the purposes for which they are intended and are used in accordance with any applicable specifications, guidelines, standards, codes of practice, regulations and laws. The supply of our products and services are also subject to certain terms, warranties and exclusions which are available on request.

DWG NO. **AWW-05**
 DATE 03.2026
 SCALE 1 : 2 @ A4





WET AREA WATERPROOFING

Disclaimer: Ardex makes every reasonable effort to ensure that the technical details, recommendations and other information contained in this drawing are accurate and represent our knowledge and experience at the time of design and publication. Ardex reserves the right to change the information without prior notice. Ardex provides the information in good faith with no representations or warranties (whether implied or otherwise), and will not be liable for any losses or damages (whether direct, indirect or consequential) whatsoever, whether in contract, negligence or any other action, arising out of or in connection with the use, or inability to use, the information. It is your responsibility to ensure that our products are used only for the purposes for which they are intended and are used in accordance with any applicable specifications, guidelines, standards, codes of practice, regulations and laws. The supply of our products and services are also subject to certain terms, warranties and exclusions which are available on request.

BATH WITHOUT RIM
 SHEET TITLE

DWG NO. **AWW-06**

DATE 03.2026
 SCALE 1 : 2 @ A4

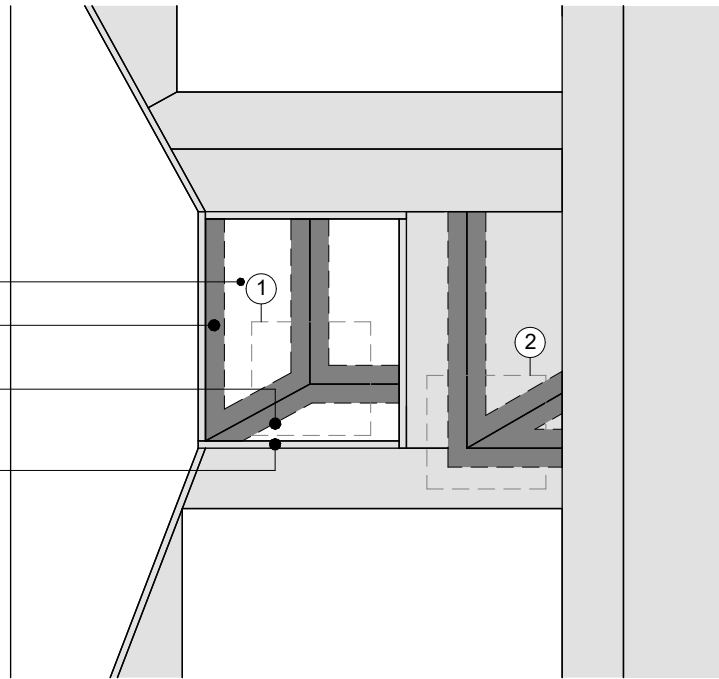


ARDEX WPM 750 WELDED
TO ARDEX STB TAPE

ARDEX STB TAPE

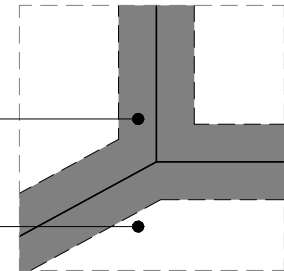
FALL IN BASE OF SOAP HOLDER
TO DRAIN TO SHOWER RECESS

JUNCTIONS FLASHED AND
COMPLETE HOLDER
WATERPROOFED



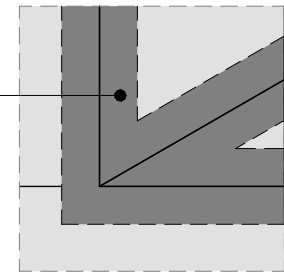
ARDEX STB TAPE

FALL IN BASE OF SOAP HOLDER
TO DRAIN TO SHOWER RECESS



CALLOUT 1

ARDEX STB TAPE



CALLOUT 2

WET AREA WATERPROOFING

TYPICAL DETAIL FOR RECESSED SOAP HOLDERS

SHEET TITLE

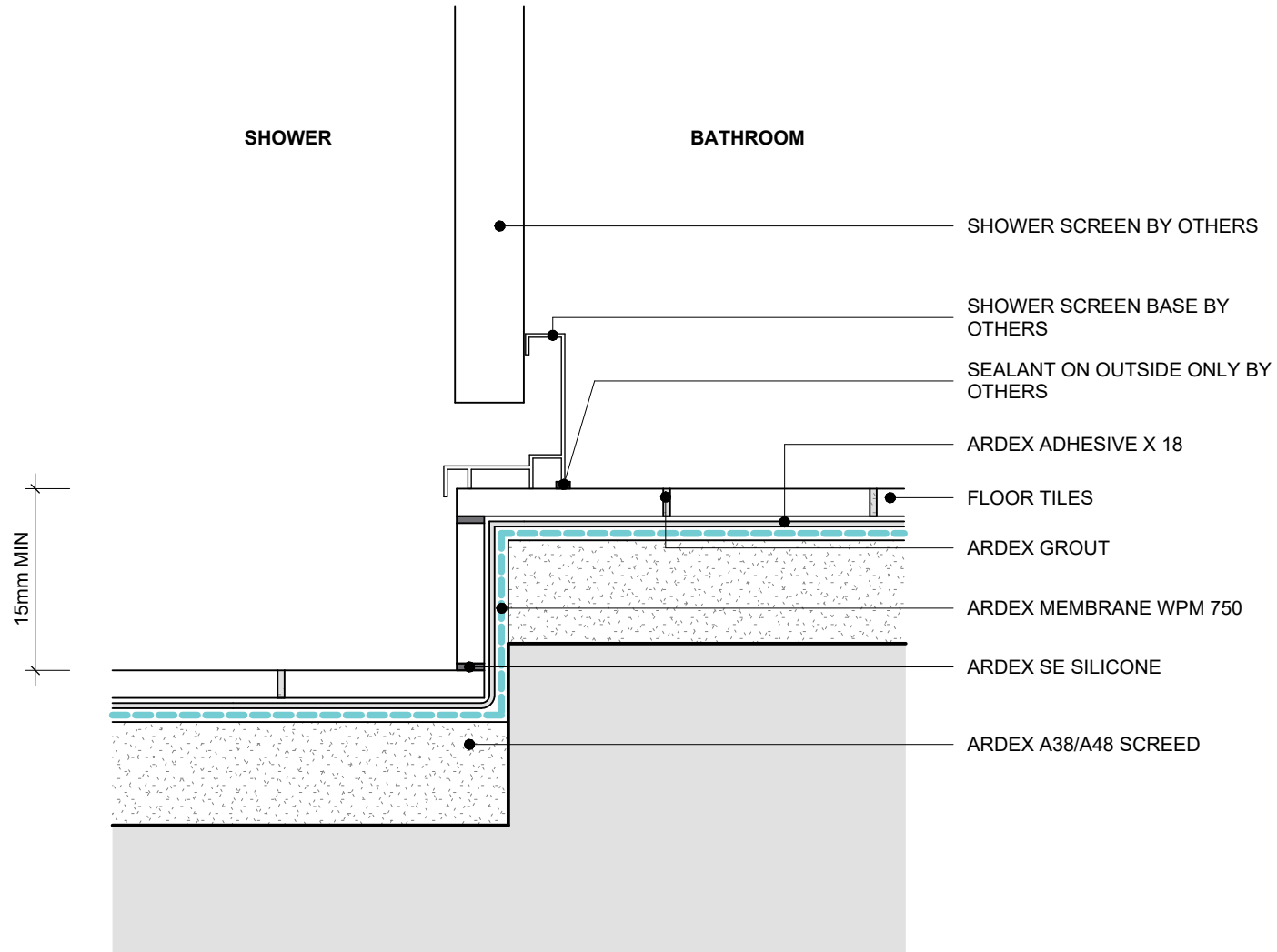
DWG NO. **AWW-07**

DATE 03.2026

SCALE As indicated



Disclaimer: Ardex makes every reasonable effort to ensure that the technical details, recommendations and other information contained in this drawing are accurate and represent our knowledge and experience at the time of design and publication. Ardex reserves the right to change the information without prior notice. Ardex provides the information in good faith with no representations or warranties (whether implied or otherwise), and will not be liable for any losses or damages (whether direct, indirect or consequential) whatsoever, whether in contract, negligence or any other action, arising out of or in connection with the use, or inability to use, the information. It is your responsibility to ensure that our products are used only for the purposes for which they are intended and are used in accordance with any applicable specifications, guidelines, standards, codes of practice, regulations and laws. The supply of our products and services are also subject to certain terms, warranties and exclusions which are available on request.



WET AREA WATERPROOFING

Disclaimer: Ardex makes every reasonable effort to ensure that the technical details, recommendations and other information contained in this drawing are accurate and represent our knowledge and experience at the time of design and publication. Ardex reserves the right to change the information without prior notice. Ardex provides the information in good faith with no representations or warranties (whether implied or otherwise), and will not be liable for any losses or damages (whether direct, indirect or consequential) whatsoever, whether in contract, negligence or any other action, arising out of or in connection with the use, or inability to use, the information. It is your responsibility to ensure that our products are used only for the purposes for which they are intended and are used in accordance with any applicable specifications, guidelines, standards, codes of practice, regulations and laws. The supply of our products and services are also subject to certain terms, warranties and exclusions which are available on request.

ENCLOSED SHOWER - MEMBRANE BELOW TILE BED

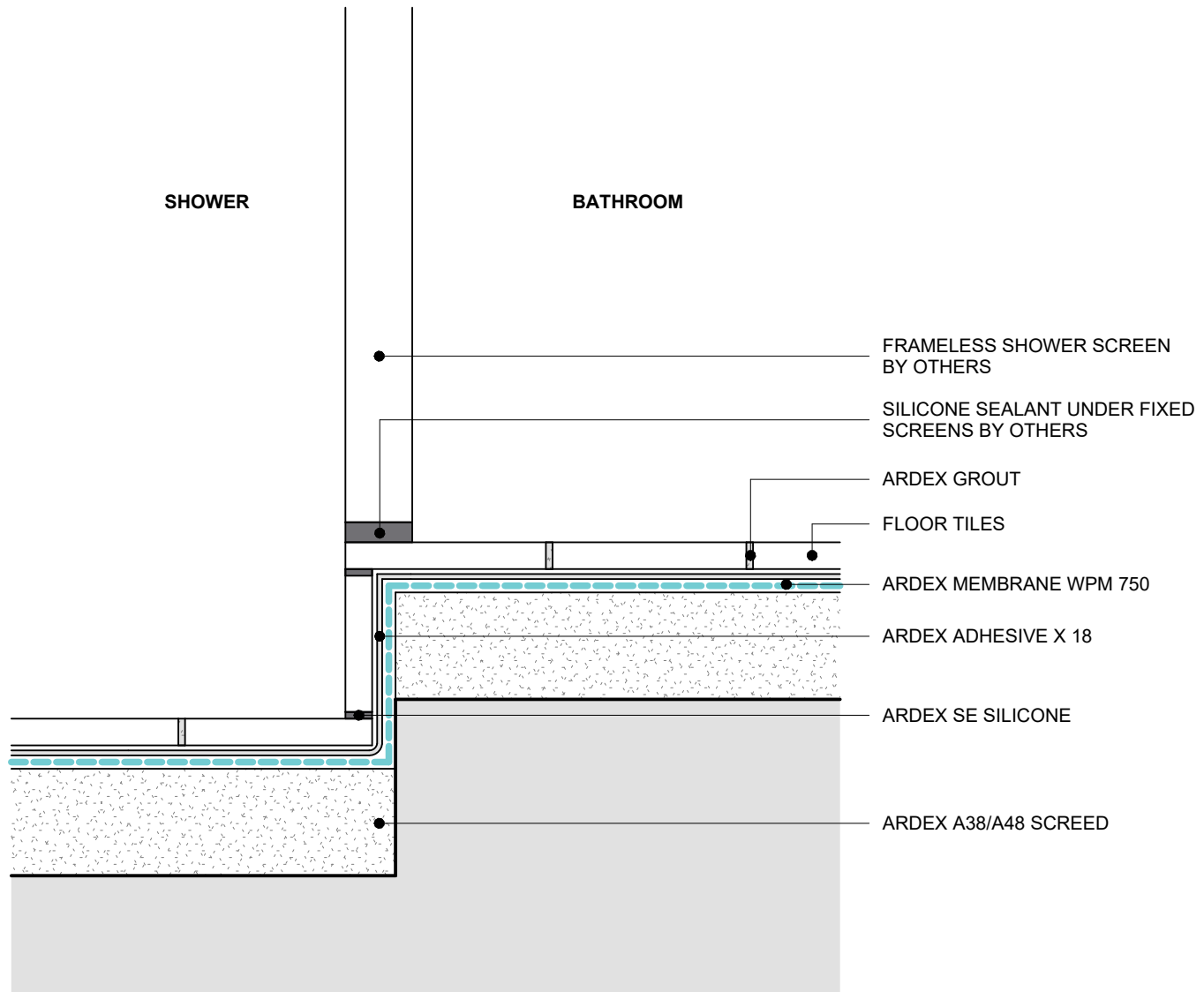
SHEET TITLE

DWG NO. **AWW-08**

DATE 03.2026

SCALE 1 : 2 @ A4





WET AREA WATERPROOFING

UNENCLOSED SHOWER - MEMBRANE BELOW TILE BED

SHEET TITLE

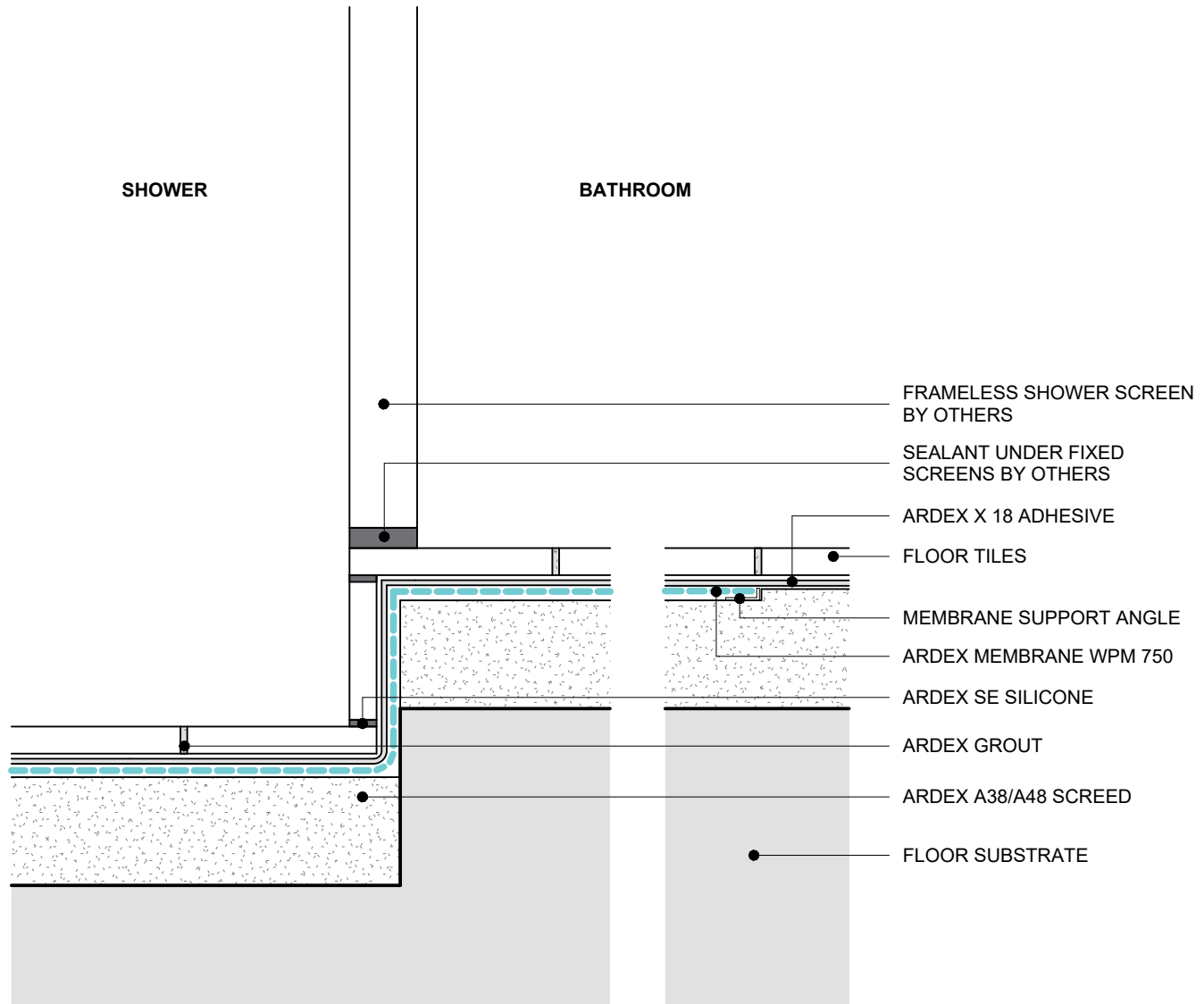
DWG NO. **AWW-09**

DATE 03.2026

SCALE 1 : 2 @ A4



Disclaimer: Ardex makes every reasonable effort to ensure that the technical details, recommendations and other information contained in this drawing are accurate and represent our knowledge and experience at the time of design and publication. Ardex reserves the right to change the information without prior notice. Ardex provides the information in good faith with no representations or warranties (whether implied or otherwise), and will not be liable for any losses or damages (whether direct, indirect or consequential) whatsoever, whether in contract, negligence or any other action, arising out of or in connection with the use, or inability to use, the information. It is your responsibility to ensure that our products are used only for the purposes for which they are intended and are used in accordance with any applicable specifications, guidelines, standards, codes of practice, regulations and laws. The supply of our products and services are also subject to certain terms, warranties and exclusions which are available on request.



WET AREA WATERPROOFING

Disclaimer: Ardex makes every reasonable effort to ensure that the technical details, recommendations and other information contained in this drawing are accurate and represent our knowledge and experience at the time of design and publication. Ardex reserves the right to change the information without prior notice. Ardex provides the information in good faith with no representations or warranties (whether implied or otherwise), and will not be liable for any losses or damages (whether direct, indirect or consequential) whatsoever, whether in contract, negligence or any other action, arising out of or in connection with the use, or inability to use, the information. It is your responsibility to ensure that our products are used only for the purposes for which they are intended and are used in accordance with any applicable specifications, guidelines, standards, codes of practice, regulations and laws. The supply of our products and services are also subject to certain terms, warranties and exclusions which are available on request.

UNENCLOSED SHOWER - MEMBRANE ABOVE TILE BED

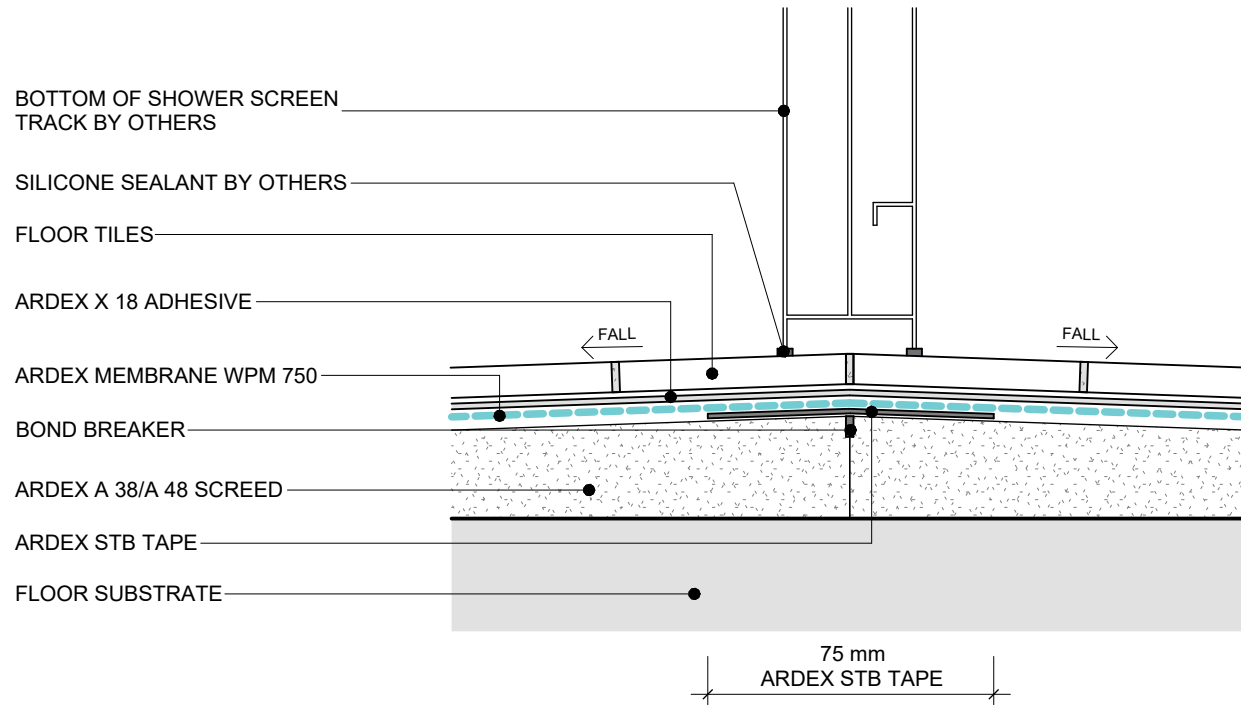
SHEET TITLE

DWG NO. **AWW-10**

DATE 03.2026

SCALE 1 : 2 @ A4





WET AREA WATERPROOFING

Disclaimer: Ardex makes every reasonable effort to ensure that the technical details, recommendations and other information contained in this drawing are accurate and represent our knowledge and experience at the time of design and publication. Ardex reserves the right to change the information without prior notice. Ardex provides the information in good faith with no representations or warranties (whether implied or otherwise), and will not be liable for any losses or damages (whether direct, indirect or consequential) whatsoever, whether in contract, negligence or any other action, arising out of or in connection with the use, or inability to use, the information. It is your responsibility to ensure that our products are used only for the purposes for which they are intended and are used in accordance with any applicable specifications, guidelines, standards, codes of practice, regulations and laws. The supply of our products and services are also subject to certain terms, warranties and exclusions which are available on request.

TYPICAL HOBLESS CONSTRUCTION

SHEET TITLE

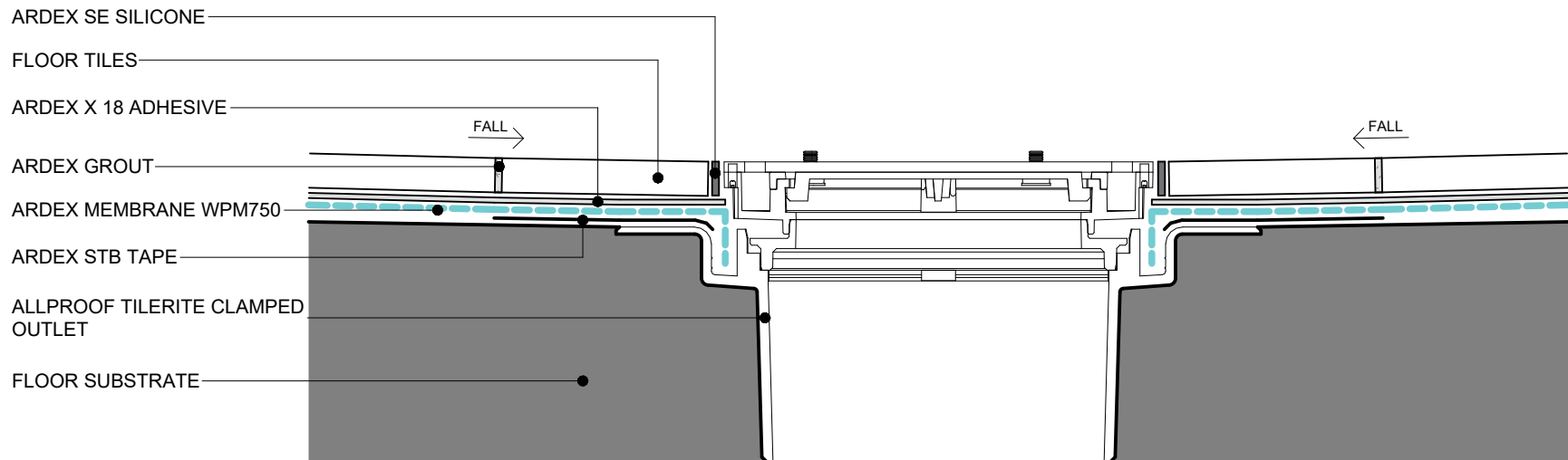
DWG NO. **AWW-11**

DATE 03.2026

SCALE 1 : 2 @ A4



NOTE:
 FLANGE PREPARED USING
 ARDEX WPM 299



WET AREA WATERPROOFING

Disclaimer: Ardex makes every reasonable effort to ensure that the technical details, recommendations and other information contained in this drawing are accurate and represent our knowledge and experience at the time of design and publication. Ardex reserves the right to change the information without prior notice. Ardex provides the information in good faith with no representations or warranties (whether implied or otherwise), and will not be liable for any losses or damages (whether direct, indirect or consequential) whatsoever, whether in contract, negligence or any other action, arising out of or in connection with the use, or inability to use, the information. It is your responsibility to ensure that our products are used only for the purposes for which they are intended and are used in accordance with any applicable specifications, guidelines, standards, codes of practice, regulations and laws. The supply of our products and services are also subject to certain terms, warranties and exclusions which are available on request.

TYPICAL MEMBRANE TERMINATION AT DRAINAGE FLANGE

SHEET TITLE

DWG NO.

AWW-12

DATE

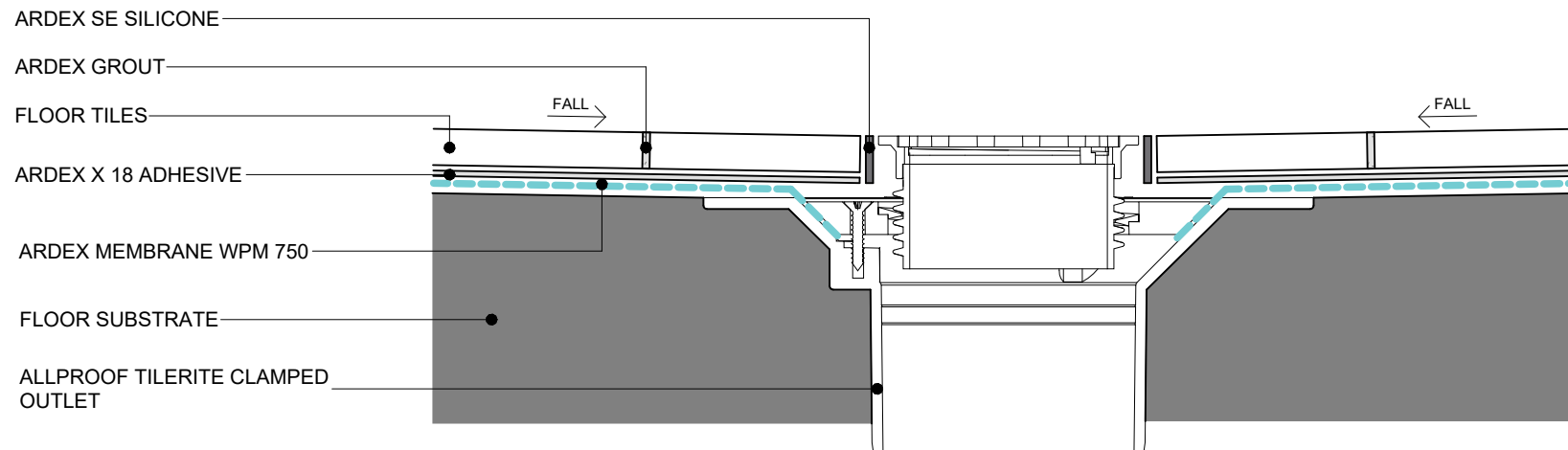
03.2026

SCALE

1 : 2 @ A4



NOTE:
 FLANGE PREPARED USING
 ARDEX WPM 299



WET AREA WATERPROOFING

WPM 750 CLAMP WASTE

SHEET TITLE

DWG NO. **AWW-13**

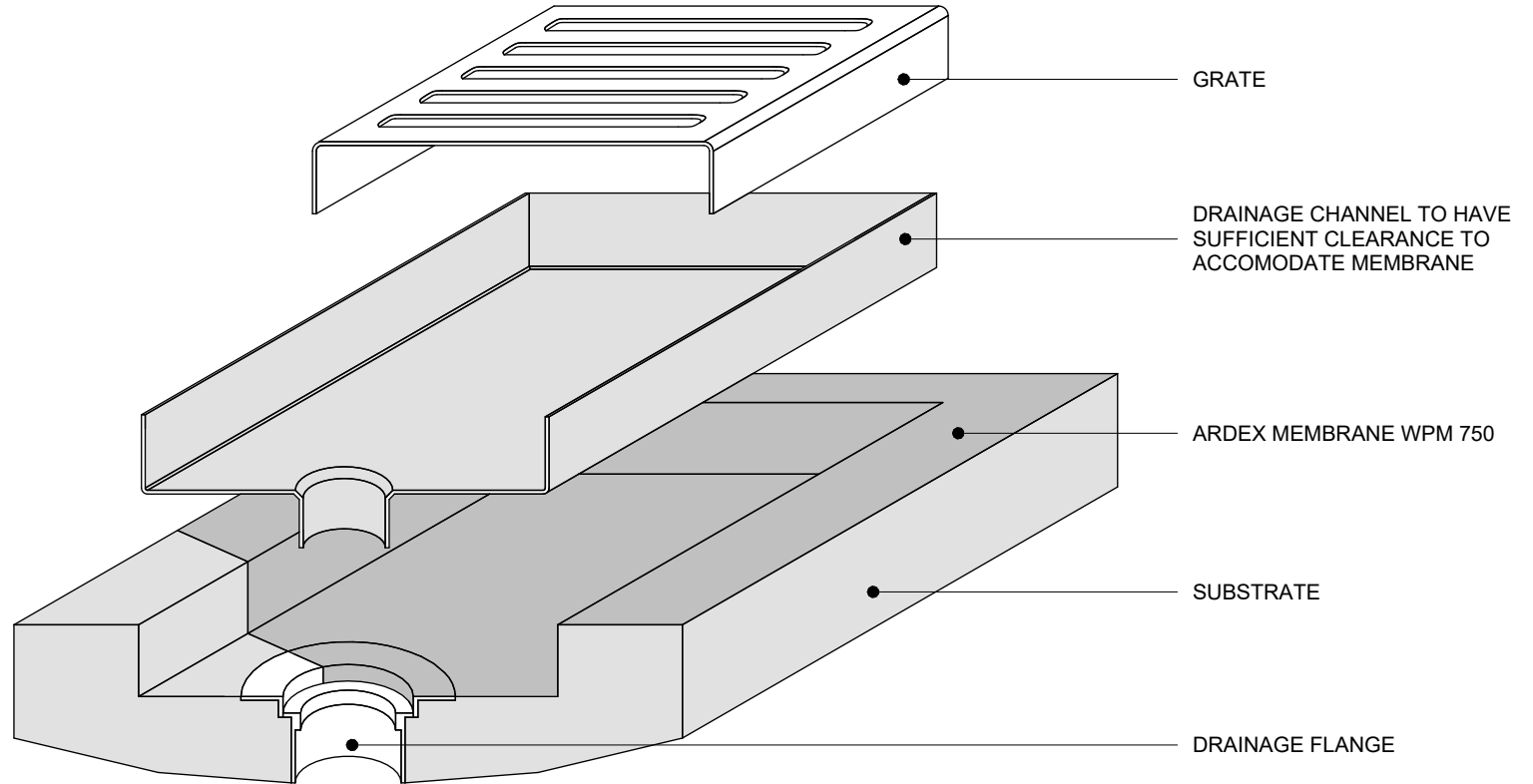
DATE 03.2026

SCALE 1 : 2 @ A4



Disclaimer: Ardex makes every reasonable effort to ensure that the technical details, recommendations and other information contained in this drawing are accurate and represent our knowledge and experience at the time of design and publication. Ardex reserves the right to change the information without prior notice. Ardex provides the information in good faith with no representations or warranties (whether implied or otherwise), and will not be liable for any losses or damages (whether direct, indirect or consequential) whatsoever, whether in contract, negligence or any other action, arising out of or in connection with the use, or inability to use, the information. It is your responsibility to ensure that our products are used only for the purposes for which they are intended and are used in accordance with any applicable specifications, guidelines, standards, codes of practice, regulations and laws. The supply of our products and services are also subject to certain terms, warranties and exclusions which are available on request.

NOTE:
FLANGE PREPARED USING
ARDEX WPM 299



WET AREA WATERPROOFING

TYPICAL MEMBRANE TERMINATION AT DRAINAGE CHANNEL

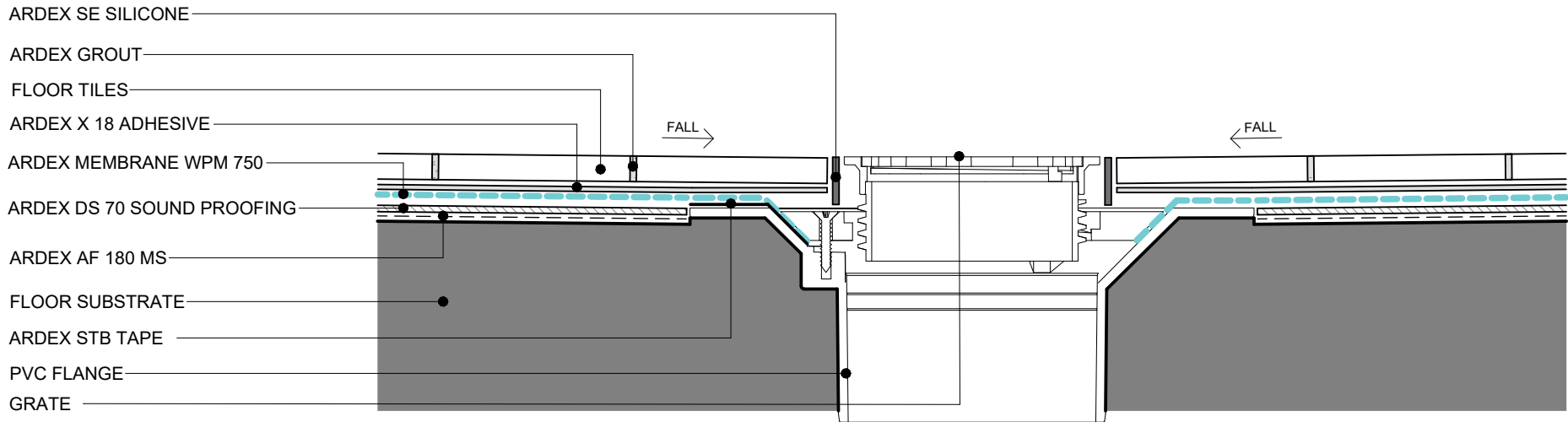
DWG NO. **AWW-14**

DATE 03.2026
SCALE 1 : 2 @ A4



Disclaimer: Ardex makes every reasonable effort to ensure that the technical details, recommendations and other information contained in this drawing are accurate and represent our knowledge and experience at the time of design and publication. Ardex reserves the right to change the information without prior notice. Ardex provides the information in good faith with no representations or warranties (whether implied or otherwise), and will not be liable for any losses or damages (whether direct, indirect or consequential) whatsoever, whether in contract, negligence or any other action, arising out of or in connection with the use, or inability to use, the information. It is your responsibility to ensure that our products are used only for the purposes for which they are intended and are used in accordance with any applicable specifications, guidelines, standards, codes of practice, regulations and laws. The supply of our products and services are also subject to certain terms, warranties and exclusions which are available on request.

NOTE:
 FLANGE PREPARED USING
 ARDEX WPM 299



WET AREA WATERPROOFING

Disclaimer: Ardex makes every reasonable effort to ensure that the technical details, recommendations and other information contained in this drawing are accurate and represent our knowledge and experience at the time of design and publication. Ardex reserves the right to change the information without prior notice. Ardex provides the information in good faith with no representations or warranties (whether implied or otherwise), and will not be liable for any losses or damages (whether direct, indirect or consequential) whatsoever, whether in contract, negligence or any other action, arising out of or in connection with the use, or inability to use, the information. It is your responsibility to ensure that our products are used only for the purposes for which they are intended and are used in accordance with any applicable specifications, guidelines, standards, codes of practice, regulations and laws. The supply of our products and services are also subject to certain terms, warranties and exclusions which are available on request.

TILE TERMINATION AT DRAINAGE FLANGE WITH SOUNDPROOFING

DWG NO. **AWW-15**

DATE 03.2026
 SCALE 1 : 2 @ A4



SHOWER SIDE

SHOWER SCREEN BY OTHERS

SILICONE SEALANT BY OTHERS

ARDEX SE SILICONE

TILES

CONCRETE HOB OR OTHER
SUITABLE MATERIAL (NO
TIMBER)

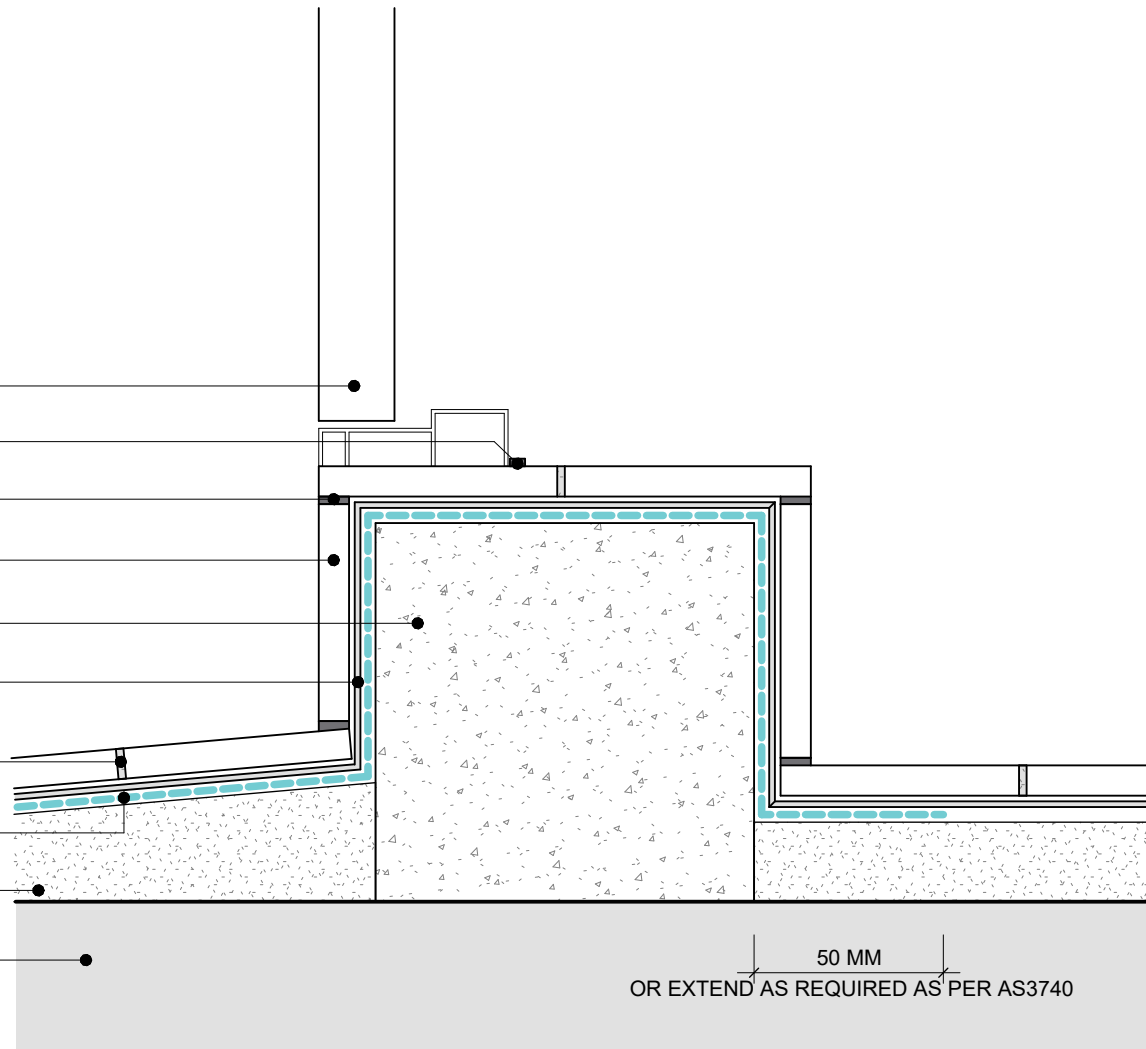
ARDEX X 18 ADHESIVE

ARDEX GROUT

ARDEX MEMBRANE WPM 750

ARDEX A 38/A 48 SCREED

FLOOR SUBSTRATE



50 MM
OR EXTEND AS REQUIRED AS PER AS3740

WET AREA WATERPROOFING

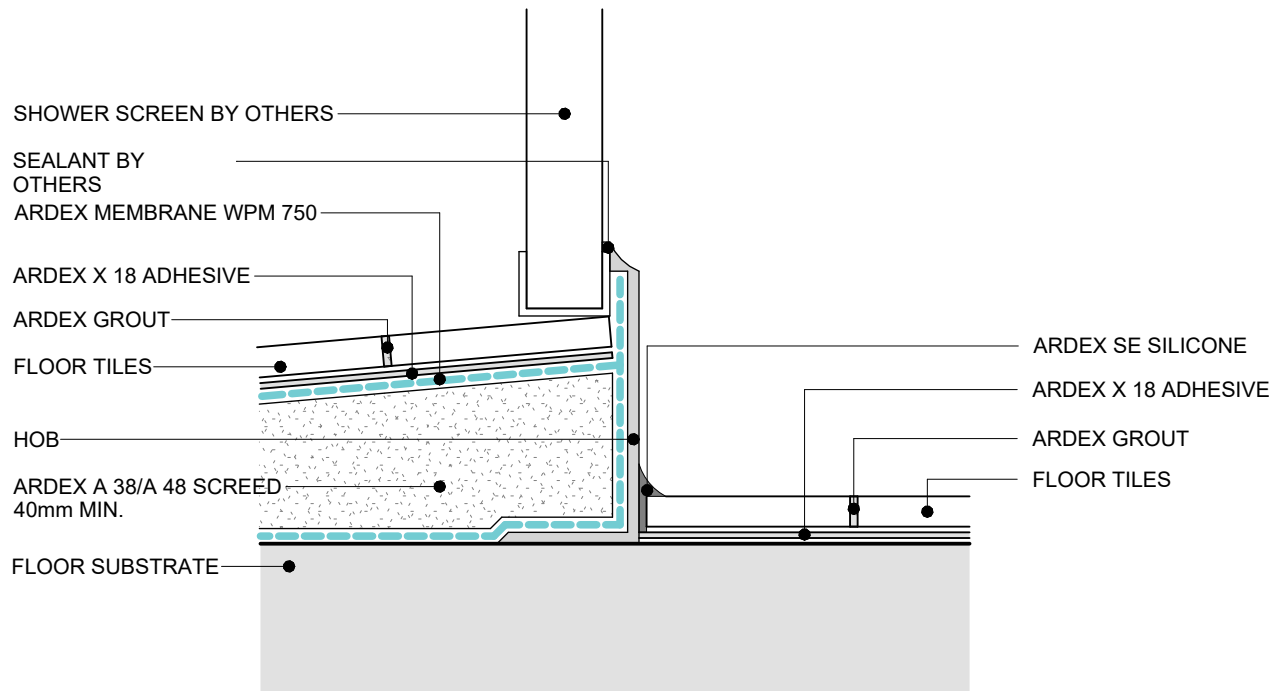
Disclaimer: Ardex makes every reasonable effort to ensure that the technical details, recommendations and other information contained in this drawing are accurate and represent our knowledge and experience at the time of design and publication. Ardex reserves the right to change the information without prior notice. Ardex provides the information in good faith with no representations or warranties (whether implied or otherwise), and will not be liable for any losses or damages (whether direct, indirect or consequential) whatsoever, whether in contract, negligence or any other action, arising out of or in connection with the use, or inability to use, the information. It is your responsibility to ensure that our products are used only for the purposes for which they are intended and are used in accordance with any applicable specifications, guidelines, standards, codes of practice, regulations and laws. The supply of our products and services are also subject to certain terms, warranties and exclusions which are available on request.

ENCLOSED SHOWER WITH HOB
SHEET TITLE

DWG NO. **AWW-16**

DATE 03.2026
SCALE 1 : 2 @ A4





SHOWER SCREEN BY OTHERS

SEALANT BY OTHERS

ARDEX MEMBRANE WPM 750

ARDEX X 18 ADHESIVE

ARDEX GROUT

FLOOR TILES

HOB

ARDEX A 38/A 48 SCREED
40mm MIN.

FLOOR SUBSTRATE

ARDEX SE SILICONE

ARDEX X 18 ADHESIVE

ARDEX GROUT

FLOOR TILES

WET AREA WATERPROOFING

ENCLOSED SHOWER ON FLAT SUBSTRATE

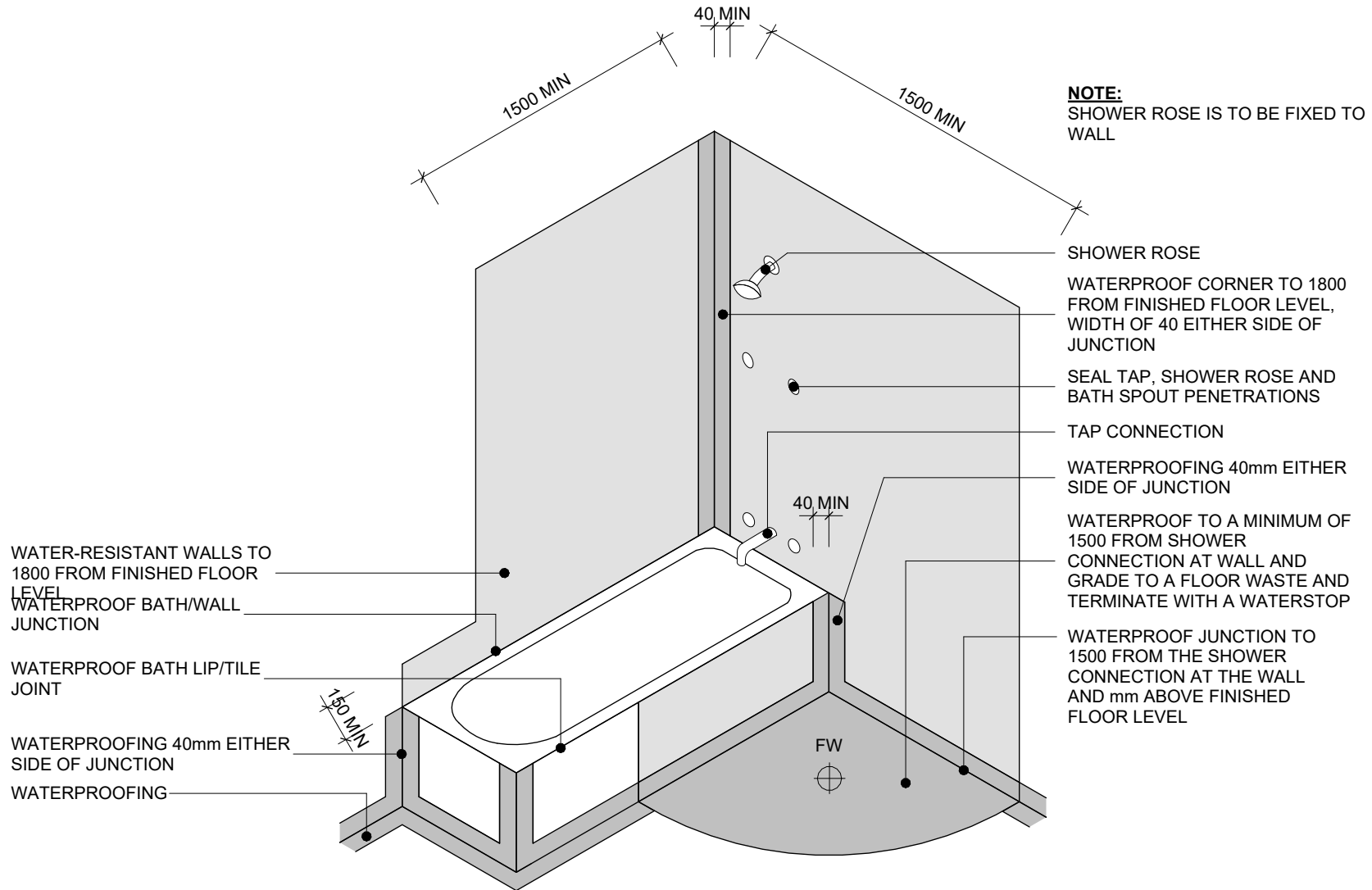
DWG NO. **AWW-17**

DATE 03.2026
SCALE 1 : 2 @ A4



Disclaimer: Ardex makes every reasonable effort to ensure that the technical details, recommendations and other information contained in this drawing are accurate and represent our knowledge and experience at the time of design and publication. Ardex reserves the right to change the information without prior notice. Ardex provides the information in good faith with no representations or warranties (whether implied or otherwise), and will not be liable for any losses or damages (whether direct, indirect or consequential) whatsoever, whether in contract, negligence or any other action, arising out of or in connection with the use, or inability to use, the information. It is your responsibility to ensure that our products are used only for the purposes for which they are intended and are used in accordance with any applicable specifications, guidelines, standards, codes of practice, regulations and laws. The supply of our products and services are also subject to certain terms, warranties and exclusions which are available on request.

SHEET TITLE



NOTE:
SHOWER ROSE IS TO BE FIXED TO WALL

WATER-RESISTANT WALLS TO 1800 FROM FINISHED FLOOR LEVEL
WATERPROOF BATH/WALL JUNCTION

WATERPROOF BATH LIP/TILE JOINT

WATERPROOFING 40mm EITHER SIDE OF JUNCTION

WATERPROOFING

SHOWER ROSE

WATERPROOF CORNER TO 1800 FROM FINISHED FLOOR LEVEL, WIDTH OF 40 EITHER SIDE OF JUNCTION

SEAL TAP, SHOWER ROSE AND BATH SPOUT PENETRATIONS

TAP CONNECTION

WATERPROOFING 40mm EITHER SIDE OF JUNCTION

WATERPROOF TO A MINIMUM OF 1500 FROM SHOWER CONNECTION AT WALL AND GRADE TO A FLOOR WASTE AND TERMINATE WITH A WATERSTOP

WATERPROOF JUNCTION TO 1500 FROM THE SHOWER CONNECTION AT THE WALL AND mm ABOVE FINISHED FLOOR LEVEL

WET AREA WATERPROOFING

NO SHOWER PANEL

SHEET TITLE

DWG NO. **AWW-18**

DATE 03.2026

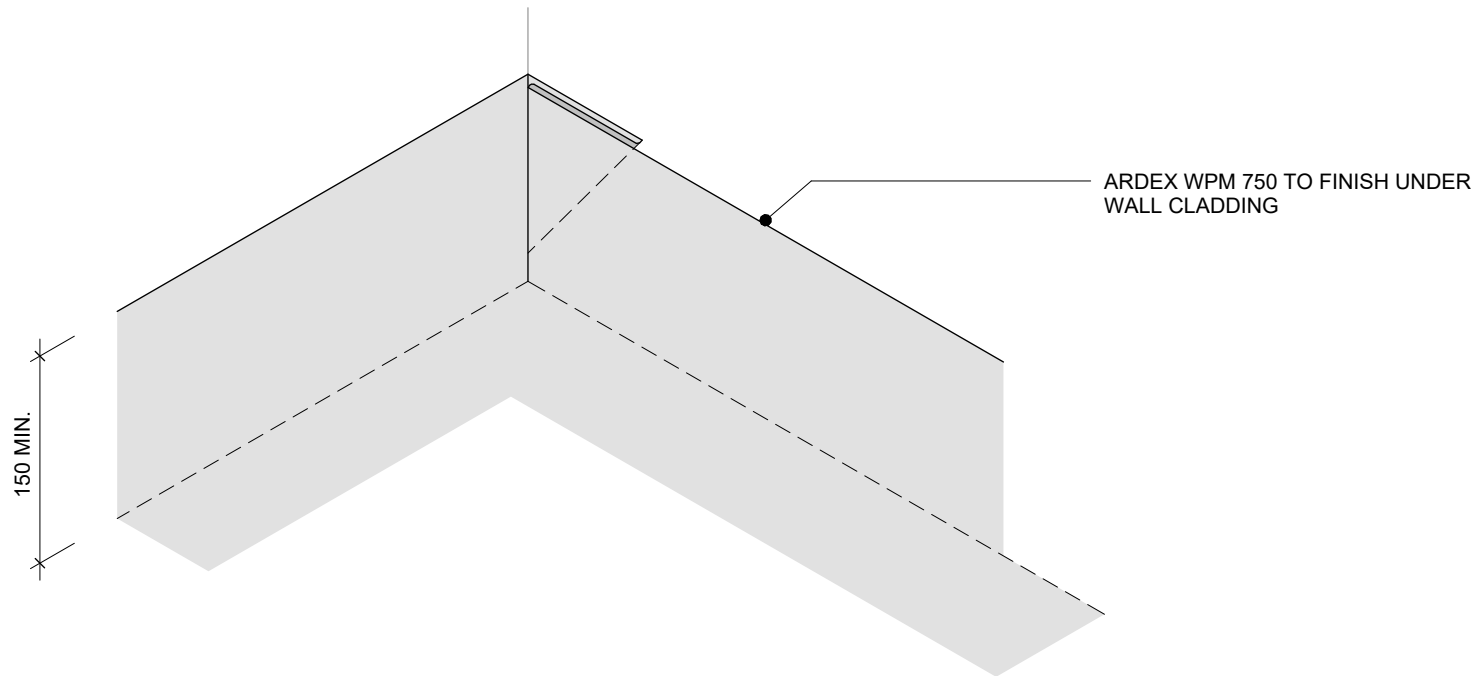
SCALE 1 : 2 @ A4



Disclaimer: Ardex makes every reasonable effort to ensure that the technical details, recommendations and other information contained in this drawing are accurate and represent our knowledge and experience at the time of design and publication. Ardex reserves the right to change the information without prior notice. Ardex provides the information in good faith with no representations or warranties (whether implied or otherwise), and will not be liable for any losses or damages (whether direct, indirect or consequential) whatsoever, whether in contract, negligence or any other action, arising out of or in connection with the use, or inability to use, the information. It is your responsibility to ensure that our products are used only for the purposes for which they are intended and are used in accordance with any applicable specifications, guidelines, standards, codes of practice, regulations and laws. The supply of our products and services are also subject to certain terms, warranties and exclusions which are available on request.

NOTE:

WITHOUT CUTTING ARDEX WPM 750
SIMPLY FOLD A 'PIG'S EAR' CORNER
AS SHOWN. THE ANGLE FOLD
SHOULD BE **BEHIND** THE MAIN SHEET
AND WELDED FLAT.



WET AREA WATERPROOFING

3D - INTERNAL CORNER

SHEET TITLE

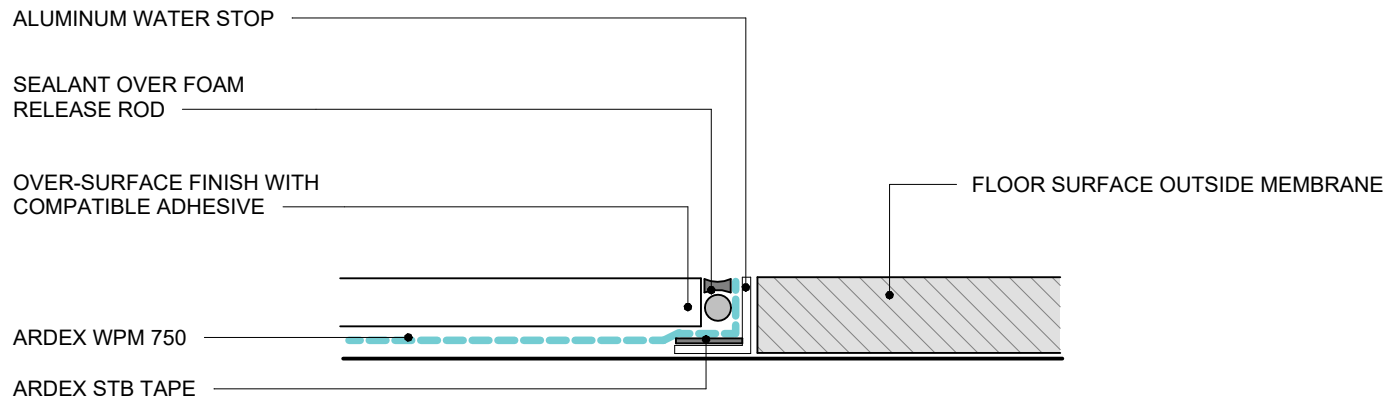
DWG NO. **AWW-19**

DATE 03.2026

SCALE 1 : 2 @ A4



Disclaimer: Ardex makes every reasonable effort to ensure that the technical details, recommendations and other information contained in this drawing are accurate and represent our knowledge and experience at the time of design and publication. Ardex reserves the right to change the information without prior notice. Ardex provides the information in good faith with no representations or warranties (whether implied or otherwise), and will not be liable for any losses or damages (whether direct, indirect or consequential) whatsoever, whether in contract, negligence or any other action, arising out of or in connection with the use, or inability to use, the information. It is your responsibility to ensure that our products are used only for the purposes for which they are intended and are used in accordance with any applicable specifications, guidelines, standards, codes of practice, regulations and laws. The supply of our products and services are also subject to certain terms, warranties and exclusions which are available on request.



WET AREA WATERPROOFING

Disclaimer: Ardex makes every reasonable effort to ensure that the technical details, recommendations and other information contained in this drawing are accurate and represent our knowledge and experience at the time of design and publication. Ardex reserves the right to change the information without prior notice. Ardex provides the information in good faith with no representations or warranties (whether implied or otherwise), and will not be liable for any losses or damages (whether direct, indirect or consequential) whatsoever, whether in contract, negligence or any other action, arising out of or in connection with the use, or inability to use, the information. It is your responsibility to ensure that our products are used only for the purposes for which they are intended and are used in accordance with any applicable specifications, guidelines, standards, codes of practice, regulations and laws. The supply of our products and services are also subject to certain terms, warranties and exclusions which are available on request.

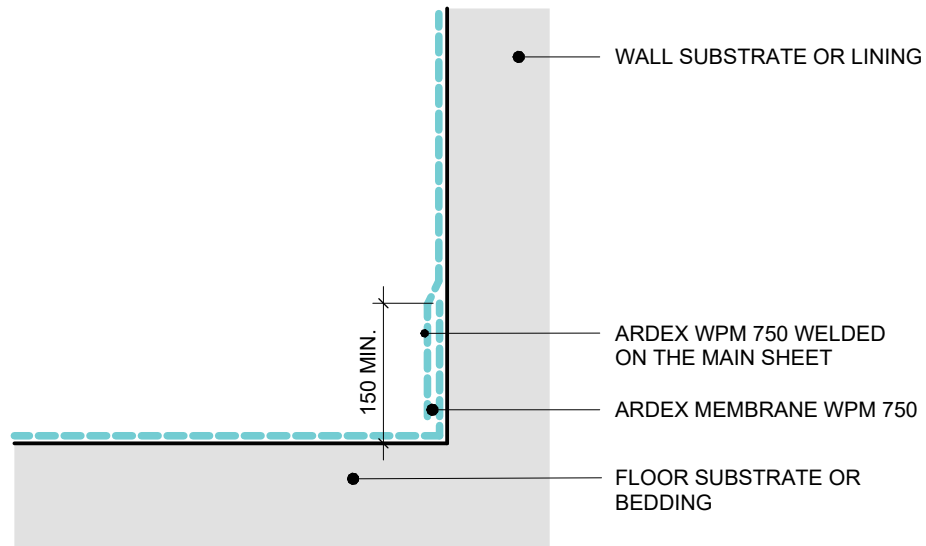
WATER STOP
SHEET TITLE

DWG NO. **AWW-20**

DATE 03.2026

SCALE 1 : 2 @ A4





DETAIL - SHEET MEMBRANE

WET AREA WATERPROOFING

Disclaimer: Ardex makes every reasonable effort to ensure that the technical details, recommendations and other information contained in this drawing are accurate and represent our knowledge and experience at the time of design and publication. Ardex reserves the right to change the information without prior notice. Ardex provides the information in good faith with no representations or warranties (whether implied or otherwise), and will not be liable for any losses or damages (whether direct, indirect or consequential) whatsoever, whether in contract, negligence or any other action, arising out of or in connection with the use, or inability to use, the information. It is your responsibility to ensure that our products are used only for the purposes for which they are intended and are used in accordance with any applicable specifications, guidelines, standards, codes of practice, regulations and laws. The supply of our products and services are also subject to certain terms, warranties and exclusions which are available on request.

WET AREA WALL/FLOOR DETAIL

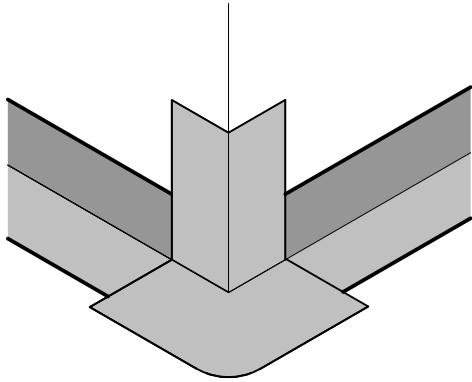
SHEET TITLE

DWG NO. **AWW-21**

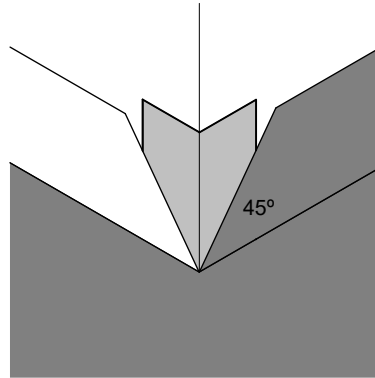
DATE 03.2026

SCALE 1 : 2 @ A4

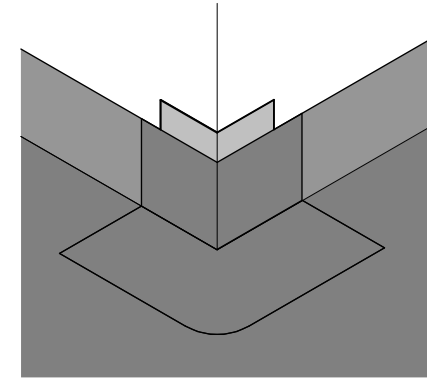




STEP 1
 INSTALL EXTERNAL CORNERS BY
 ADHERING 100MM FLASHING TO
 THE CORNER AS SHOWN



STEP 2
 ADHERE ARDEX WELDTEC MEMBRANE
 TO THE FLOOR AND UP THE WALL WITH
 A MINIMUM CUT HEIGHT OF 150MM.
 CUT MEMBRANE FROM CORNER
 AT 45° AS SHOWN.



STEP 3
 COVER CORNER POINT WITH
 A LAYER OF ARDEX WELDTEC
 MEMBRANE WELDED TO BASE
 LAYER

WET AREA WATERPROOFING

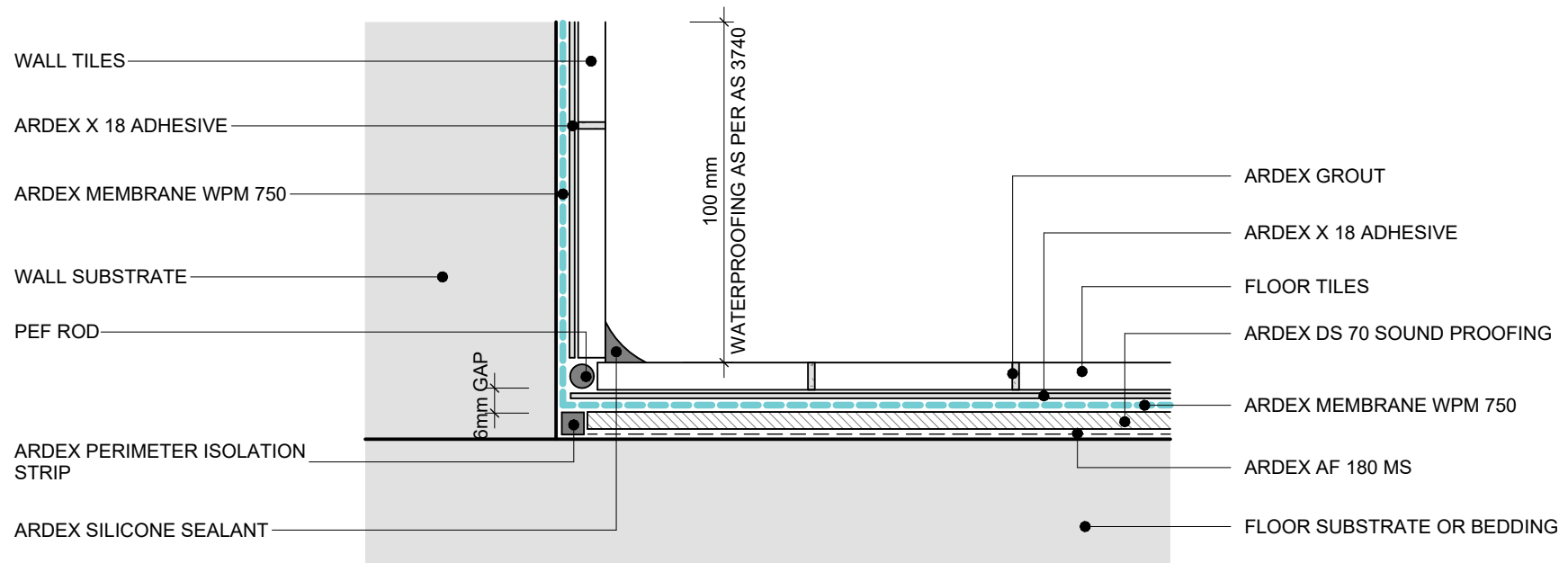
Disclaimer: Ardex makes every reasonable effort to ensure that the technical details, recommendations and other information contained in this drawing are accurate and represent our knowledge and experience at the time of design and publication. Ardex reserves the right to change the information without prior notice. Ardex provides the information in good faith with no representations or warranties (whether implied or otherwise), and will not be liable for any losses or damages (whether direct, indirect or consequential) whatsoever, whether in contract, negligence or any other action, arising out of or in connection with the use, or inability to use, the information. It is your responsibility to ensure that our products are used only for the purposes for which they are intended and are used in accordance with any applicable specifications, guidelines, standards, codes of practice, regulations and laws. The supply of our products and services are also subject to certain terms, warranties and exclusions which are available on request.

3D - EXTERNAL CORNER
 SHEET TITLE

DWG NO. **AWW-22**

DATE 03.2026
 SCALE 1 : 2 @ A4





WET AREA WATERPROOFING

Disclaimer: Ardex makes every reasonable effort to ensure that the technical details, recommendations and other information contained in this drawing are accurate and represent our knowledge and experience at the time of design and publication. Ardex reserves the right to change the information without prior notice. Ardex provides the information in good faith with no representations or warranties (whether implied or otherwise), and will not be liable for any losses or damages (whether direct, indirect or consequential) whatsoever, whether in contract, negligence or any other action, arising out of or in connection with the use, or inability to use, the information. It is your responsibility to ensure that our products are used only for the purposes for which they are intended and are used in accordance with any applicable specifications, guidelines, standards, codes of practice, regulations and laws. The supply of our products and services are also subject to certain terms, warranties and exclusions which are available on request.

TILED FLOOR SOUNDPROOFING WITH WATERPROOFING

SHEET TITLE

DWG NO.

AWW-23

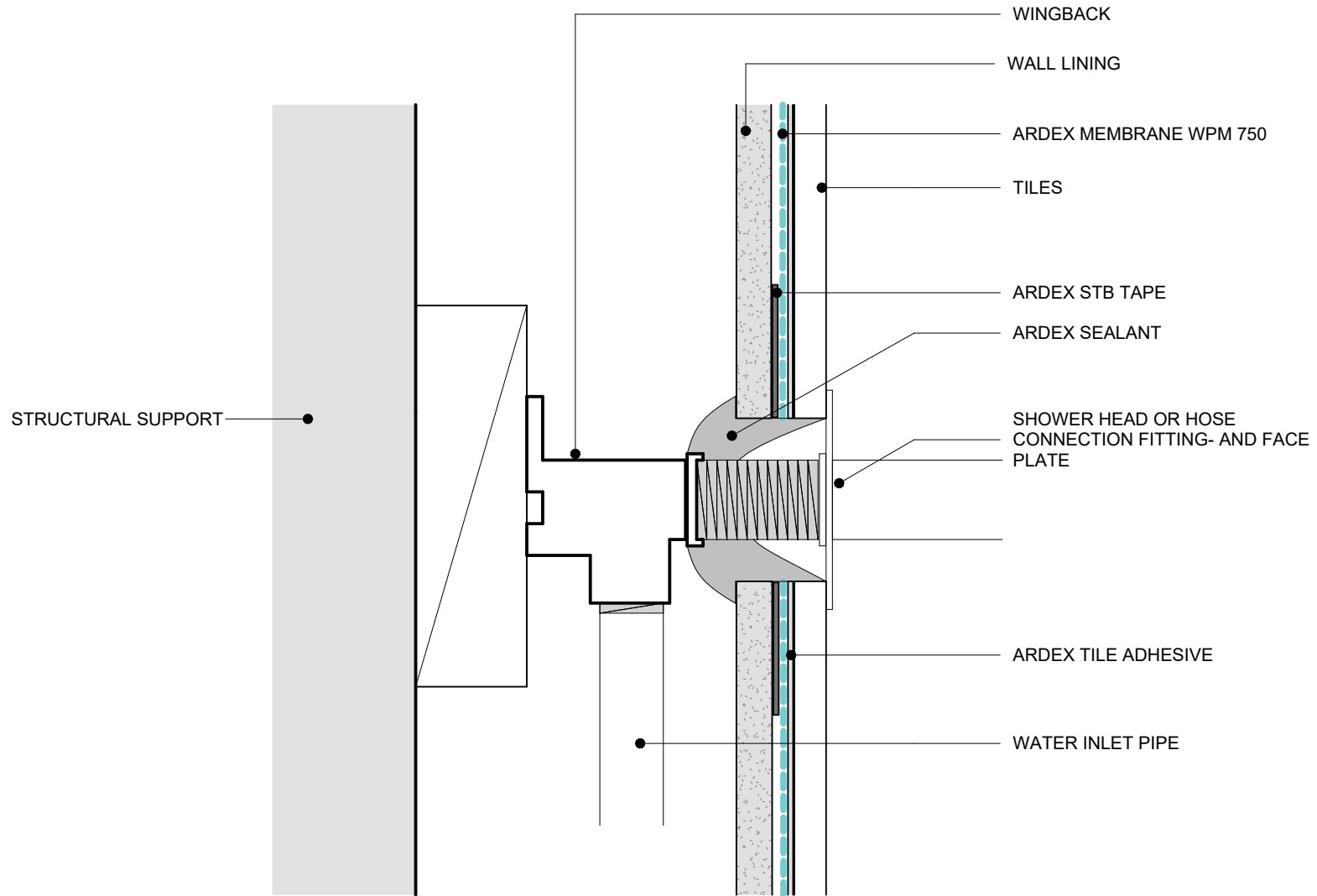
DATE

03.2026

SCALE

1 : 2 @ A4





WET AREA WATERPROOFING

Disclaimer: Ardex makes every reasonable effort to ensure that the technical details, recommendations and other information contained in this drawing are accurate and represent our knowledge and experience at the time of design and publication. Ardex reserves the right to change the information without prior notice. Ardex provides the information in good faith with no representations or warranties (whether implied or otherwise), and will not be liable for any losses or damages (whether direct, indirect or consequential) whatsoever, whether in contract, negligence or any other action, arising out of or in connection with the use, or inability to use, the information. It is your responsibility to ensure that our products are used only for the purposes for which they are intended and are used in accordance with any applicable specifications, guidelines, standards, codes of practice, regulations and laws. The supply of our products and services are also subject to certain terms, warranties and exclusions which are available on request.

TYPICAL SHOWER HEAD OR FLEXIBLE HOSE CONNECTION

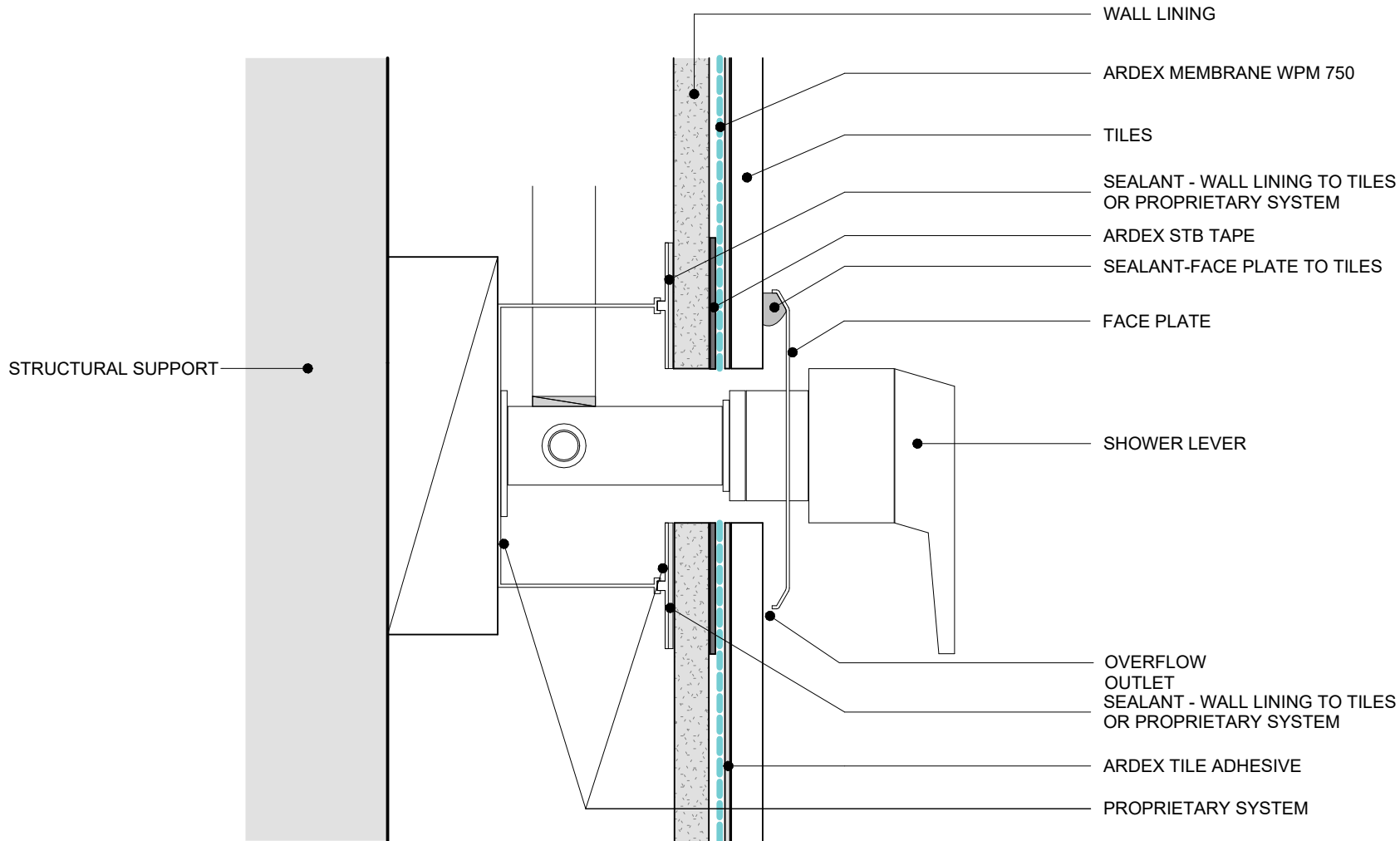
SHEET TITLE

DWG NO. **AWW-24**

DATE 03.2026

SCALE 1 : 2 @ A4





WET AREA WATERPROOFING

Disclaimer: Ardex makes every reasonable effort to ensure that the technical details, recommendations and other information contained in this drawing are accurate and represent our knowledge and experience at the time of design and publication. Ardex reserves the right to change the information without prior notice. Ardex provides the information in good faith with no representations or warranties (whether implied or otherwise), and will not be liable for any losses or damages (whether direct, indirect or consequential) whatsoever, whether in contract, negligence or any other action, arising out of or in connection with the use, or inability to use, the information. It is your responsibility to ensure that our products are used only for the purposes for which they are intended and are used in accordance with any applicable specifications, guidelines, standards, codes of practice, regulations and laws. The supply of our products and services are also subject to certain terms, warranties and exclusions which are available on request.

TYPICAL SHOWER MIXER USING PROPRIETARY SYSTEM

SHEET TITLE

DWG NO.

AWW-25

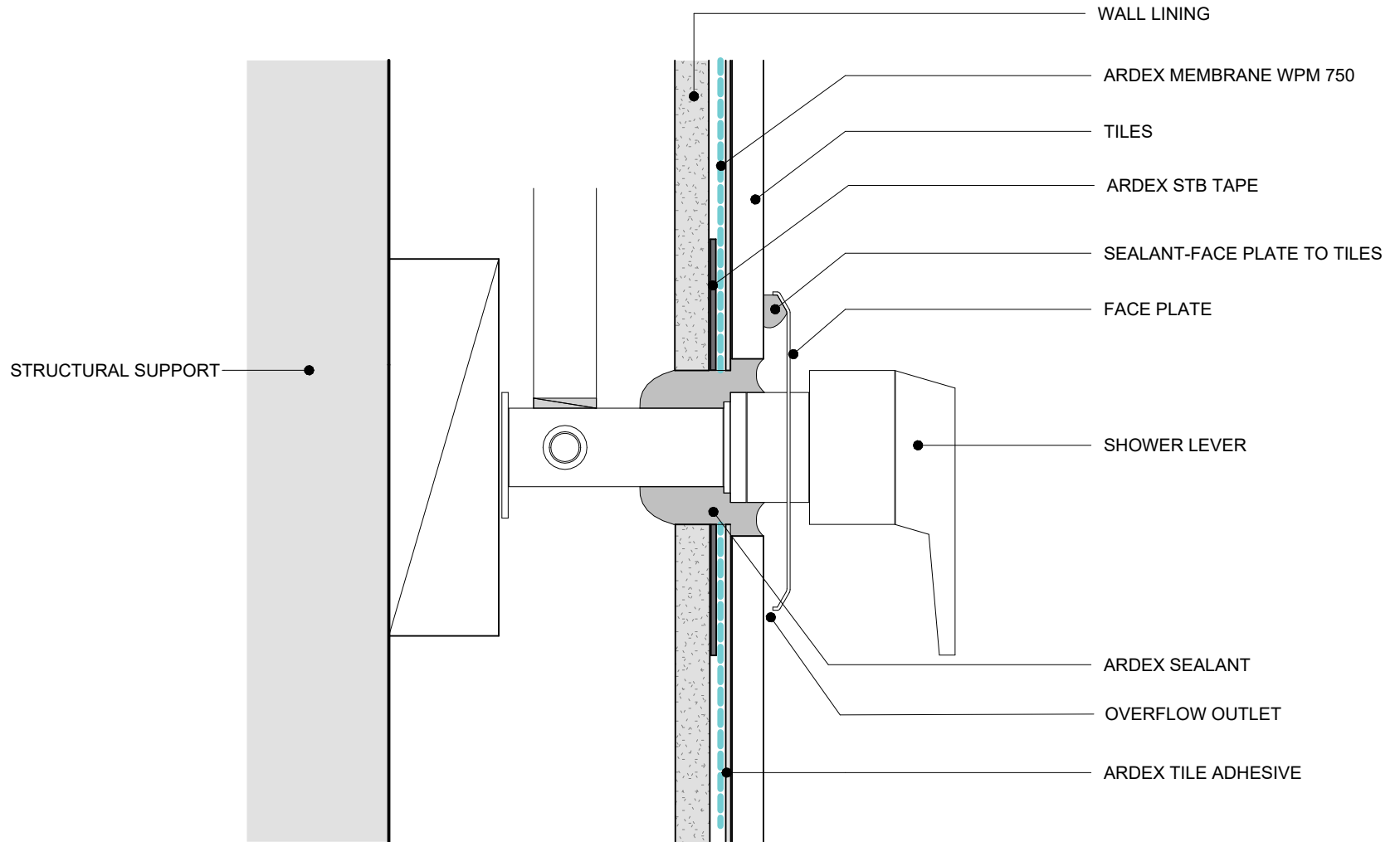
DATE

03.2026

SCALE

1 : 2 @ A4





WET AREA WATERPROOFING

Disclaimer: Ardex makes every reasonable effort to ensure that the technical details, recommendations and other information contained in this drawing are accurate and represent our knowledge and experience at the time of design and publication. Ardex reserves the right to change the information without prior notice. Ardex provides the information in good faith with no representations or warranties (whether implied or otherwise), and will not be liable for any losses or damages (whether direct, indirect or consequential) whatsoever, whether in contract, negligence or any other action, arising out of or in connection with the use, or inability to use, the information. It is your responsibility to ensure that our products are used only for the purposes for which they are intended and are used in accordance with any applicable specifications, guidelines, standards, codes of practice, regulations and laws. The supply of our products and services are also subject to certain terms, warranties and exclusions which are available on request.

TYPICAL SHOWER MIXER USING SEALANT

SHEET TITLE

DWG NO. **AWW-26**

DATE 03.2026

SCALE 1 : 2 @ A4

