



ARDEX TILING ACCESSORIES

TOOLS

All of our tiling trade tools are of the highest quality and have been tested and approved by experienced professionals.

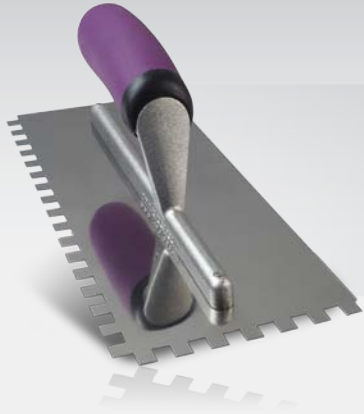
TILING TROWELS

All of our trade trowels are of the highest quality and have been tested and approved by experienced professionals.

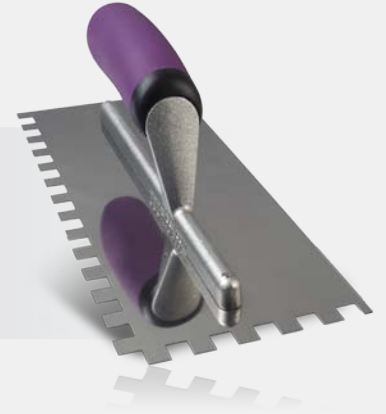
- Grade 420 high carbon stainless steel for easy cleaning and rust-proof longevity.
- 9 rivets, 7 housed and 2 with external reinforcement for extra strength and rigidity.
- Comfort grip rubber handle.
- Brushed shaft designed to increase grip with wet or dirty hands.
- Slide unit packaging to protect the blade after purchase.
- Specially designed 14mm extra long trowel to allow quicker installation of large format tiles.

Size	Description	Code
6mm Notch	Stainless Steel Square 6mm Notch Trowel	19171





Size	Description	Code
8mm Notch	Stainless Steel Square 8mm Notch Trowel	19172



Size	Description	Code
10mm Notch	Stainless Steel Square 10mm Notch Trowel	19173



Size	Description	Code
12mm Notch	Stainless Steel Square 12mm Notch Trowel	19174



Description	Code
Straight Edge Stainless Steel Finishing Trowel	19175



Size	Description	Code
14mm Notch (400mm Long)	Stainless Steel Square 14mm Notch Trowel (Extra Length)	19176

SCRAPERS

ARDEX Scrapers do more than spread and remove product. Forged from one piece of surgical grade stainless steel, incorporating a hammered end. They will be envied on the work site.

- Grade 420 high carbon stainless steel for easy cleaning and rust-proof longevity.
- Single cast tool for strength.
- Comfort grip rubber handle.
- Flat end for use with mallet.

Size	Description	Code
50mm	Scraper 50mm (2")	16935





Size	Description	Code
75mm	Scraper 75mm (3")	16940

Size	Description	Code
100mm	Scraper 100mm (4")	16936



Description	Code
ARDEX Multitool Plus	16938

What is a Multi Tool?

- Scraper
- Convex / Concave Scraper
- Smoother / Spreader
- Cleans paint rollers
- Removes, pulls and sets nails
- Pail opener
- Cleans/opens cracks
- Knife
- Hammer head
- Bottle opener

Size	Description	Code
6mm	6mm Notch Spreader	16939



Description	Code
Bent Wall Scraper	16945

TROWELS

For mixing, measuring and spreading construction chemicals.

- Stainless steel heavy duty construction.
- Comfort grip rubber handle.
- Specially designed goose neck to hang on bucket edge.

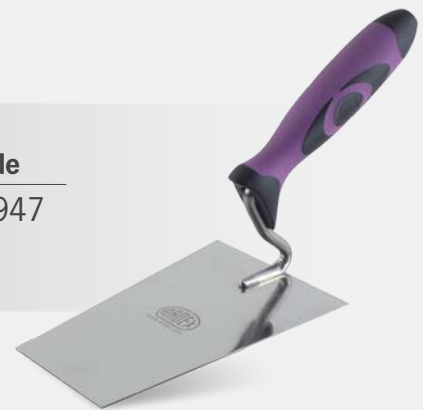


Innovation:

Unique handles designed to balance on bucket edge.

Size	Description	Code
200mm	Stainless Steel Gauging Trowel 200mm (8")	16946

Size	Description	Code
160mm	Stainless Steel Splash Trowel 160mm (6.3")	16947



Size	Description	Code
200mm	Stainless Steel Splash Trowel 200mm (8")	16948



Precision tools for accurate shaping and cutting of tiles.

- Strengthened steel.
- Comfort grip handle.
- Multiple jaw combinations for various shaping and tile cutting.



Description

Straight Jaw Tile Nipper

Code

16873



Description

Curved Jaw Tile Nipper

Code

16874



Description

Combination Jaw Tile Nipper

Code

16875

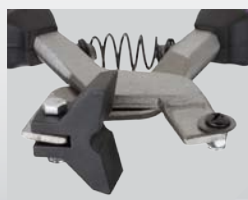


Description

Pro Tile Nippers

Code

16906



Description

Handheld Tile Cutter

Code

16907

GROUT AND SILICONE

The perfect finish to a tiled surface requires the right tools.



Description	Code
-------------	------

Epoxy Grout Float	16932
-------------------	-------

- Apply and clean up epoxy grout.
- Firm quality pad ensures smooth application and resists sticky grouts.
- 2 square edges for complete coverage in corners.
- 2 rounded edges for smooth application and to prevent gauging of grout.

Description	Code
-------------	------

Rubber Grout Float	16933
--------------------	-------

- For application of all types of grout.
- Tapered to make filling joints and corners easier.
- Flexible Japanese Rubber for Professional grout finishes.



Description	Code
-------------	------

Scrubbing sponge	16934
------------------	-------

- Remove grout haze and make an easy job of grout clean up.

Description	Code
-------------	------

Micro Sponge	70428
--------------	-------

- Hydrophilised for premium absorbency whilst holding moisture to minimize dripping and mess.





Description	Code
Grouting Gun	16942

- Applies any ARDEX grout, particularly useful for epoxy grouts to minimise waste and clean up.
- Body cartridge can be reused or replaced with any 50mm pvc piping.

Description	Code
Caulking Gun	16943

- Perfect for all cartridge products such as ARDEX Silicones and ARDEX CA 20P Constuction Adhesive.



Description	Code
Grout Saw	16909
Grout Saw Replacement Blades	16910

- Makes easy work of removing old grout for rectifications or repair of tiled areas.
- Dual blades can be used for wider joints allowing quicker removal or singular for small grout joints.
- Replacement blades are also available.

Description	Code
Silicone Applicator	8001697

- Makes easy work of spreading, smoothing and moulding silicone leaving a perfect finish to the silicone joint.



TILE ALIGNMENT

For a professional finish to your job the right tile alignment tools are important.

Size	Description	Code
1.5mm	Cross Spacers 1.5mm x 100 Bag	16913
1.5mm	Cross Spacers 1.5mm x 500 Bag	16914
1.5mm	Cross Spacers 1.5mm x 2000 Tub	16915
3mm	Cross Spacers 3mm x 100 Bag	16916
3mm	Cross Spacers 3mm x 500 Bag	16917
3mm	Cross Spacers 3mm x 800 Tub	16918

- For perfect grout joints.
- Available in 1.5mm and 3mm in either a resalable zip lock bag or resalable tubs.



Description	Code
Tile Wedges x 100 Bag	16919
Tile Wedges x 500 Bag	16893
Tile Wedges x 1500 Tub	16895

- Useful in aligning and holding tiles during application.
- Available in resalable zip lock bags or resalable tubs.



For perfect tile-to-tile levelling.

The patented *LASH* system is designed for quick installation and reduces costly call back by insuring the finished floor surface is lippage-free. This time saving system helps adjust the height of the tiles and evenly holds their edges throughout the curing process of the setting material.

- Durable nylon construction for secure installation.
- High-visibility yellow wedges are easy to distinguish on the job site.
- Specially designed break-off point clips for swift removal.
- Produces 1/16" joint spacing.
- May be combined with regular tile spacers for wider joints - up to 1/4"
- Wedges are reusable.

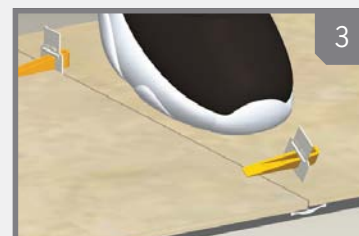
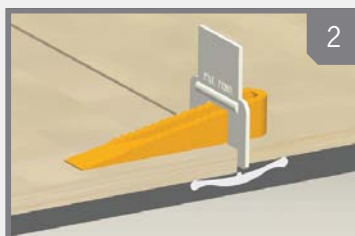
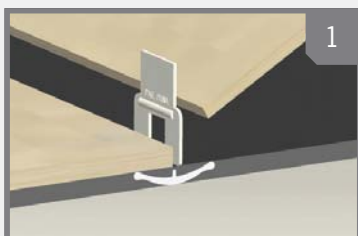
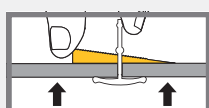
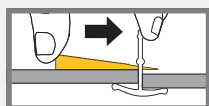
Advantages to installer:

- Very easy to learn and use at any skill level.
- Great for use with tiles of varied thickness.
- Requires minimal effort to install and remove.
- Virtually eliminates lippage.
- Prevents tile from moving during the installation.
- Speeds up installation.
- Less time at the job = more jobs in one day = more profit.
- Decrease call-backs due to poor installation.

Description	Code
Lash Levelling Clips x 100	19202
Lash Levelling Wedges x 100	19203



Aligns and holds tiles for a smooth floor.



Step 1

Slide two *LASH* clips under the tile and into the mortar approximately 5cm from each end of the tile. Place the second tile.

Step 2

Slide the reusable *LASH* wedges into the clips to level, align, space and hold the tiles.

Step 3

Once the mortar sets, simply kick clips, forcing them to snap off at the specially designed break-point.

MIXING AND APPLICATION TOOLS

The ARDEX Research and Development team are world leaders in chemical technology and the ARDEX tool range ensures you get the most out of construction products.



Description	Code
-------------	------

Metal Suction Cup	16941
-------------------	-------

- Suction Cup rated to 25kg makes perfect placement of large format tiles simple and accurate.

Description	Code
-------------	------

Marking Pencils	16911
-----------------	-------

- Marking pencils easily mark ceramics and are removable once complete for aligning, cutting and laying out tiling jobs.



Description	Code
-------------	------

White Rubber Mallet	16912
---------------------	-------

- Set the tile into adhesive bed without marking the tile.
- Useful when using scrapers for extra leverage, closing buckets and an endless variety of uses on site.





Description

Code

Electric Mixer incl. Paddle

16944

- Electric mixer is a professional 1600 watt, two geared variable speed mixer for tile adhesives and floor levellers. It comes in a blow-molded case and has a removable paddle mixer.
- Mixing paddle has been specially designed by ARDEX for use with tile adhesives and floor levelling products to provide the right vortex of mix to get optimal results out of your building products.



Two geared variable speed control.



Description

Code

Mixing Paddle

10152

- Polymer activating mixing paddle for non-ARDEX variable chuck mixers.
- Specially designed for optimal product performance.



Innovation:

Paddles designed to get optimal results out of tile adhesives and floor levellers.

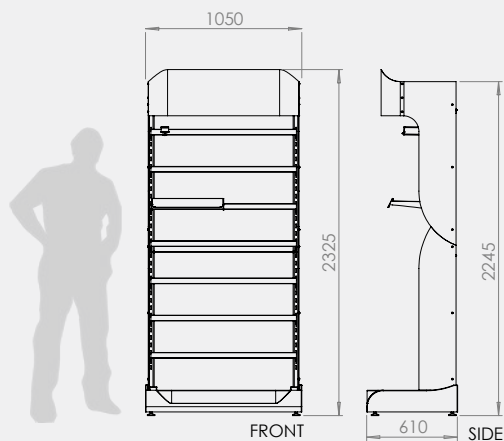
RDX MULTI TOOL

Description	Code
Ultimate Tool	19730
<ul style="list-style-type: none">■ Stainless Steel■ Pliers■ Strengthened cutting edge■ 5 position wrench■ Corkscrew■ Bottle Opener■ Large & small Flat Screwdriver■ Large & small Philips Screwdriver■ Carry pouch	



Engineered customisable tiling installation centres are sleek and modern. Easy to assemble and adjust for various product mixes, the tool bay is a light weight sturdy construction that can be used in multiples or singularly.

- Foam PVC printed header and side graphics.
- LED downlights.
- Heavy duty powdercoated metal frame.
- Flip scan hooks for hangsell products.
- Height adjustable flush bars for hook/shelf with interchangeable graphics.
- Plastic vacuum formed base.





■ ARDEX AUSTRALIA PTY LTD

20 Powers Road
Seven Hills NSW 2147

Phone: 1300 788 780

Fax: 1300 780 102

Email: technicalservices@ardexaustralia.com

Internet: www.ardexaustralia.com

■ TOLL FREE TECHNICAL SERVICES:

1800 224 070 (Australia)

0800 227 339 (NZ)

■ ARDEX NEW ZEALAND LTD

32 Lane Street
Woolston, Christchurch 8241

Phone: 0800 227 339

Fax: (03) 3849779

Email: info@ardexnz.com

Internet: www.ardex.co.nz

ARDEX TILING ACCESSORIES

